

**Vieques
Restoration Advisory Board Meeting
Environmental Restoration Program Update**

February 2011

Current Field Investigations

West Vieques

Solid Waste Management Unit (SWMU) 6

Post-removal Supplemental Confirmatory Sampling

SWMU 6 - Status



- **Site History**

- Former waste disposal site

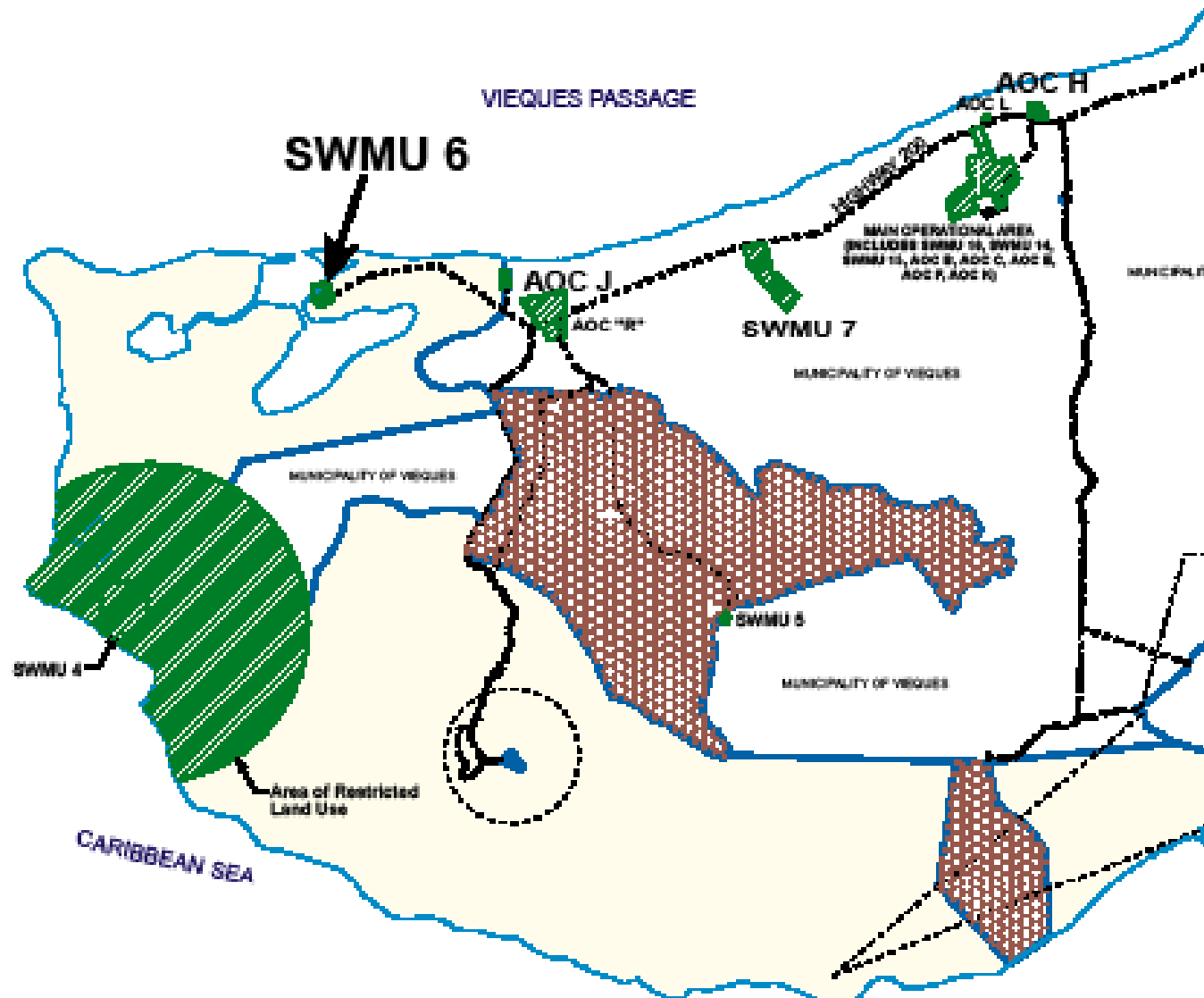
- **Removal Action**

- Debris and contaminated soil removal action completed in June 2009
- Removal action changed site from land to lagoon setting
- Confirmatory samples collected at the time suggested the need for additional samples to sufficiently characterize the new setting

- **Current Activities**

- Surface water and sediment samples are being collected to evaluate new site conditions

SWMU 6 – Location



SWMU 6 – Before Removal Action



SWMU 6 – During Removal Action



SWMU 6 – During Removal Action



SWMU 6 – During Removal Action



SWMU 6 – During Removal Action



SWMU 6 – During Removal Action



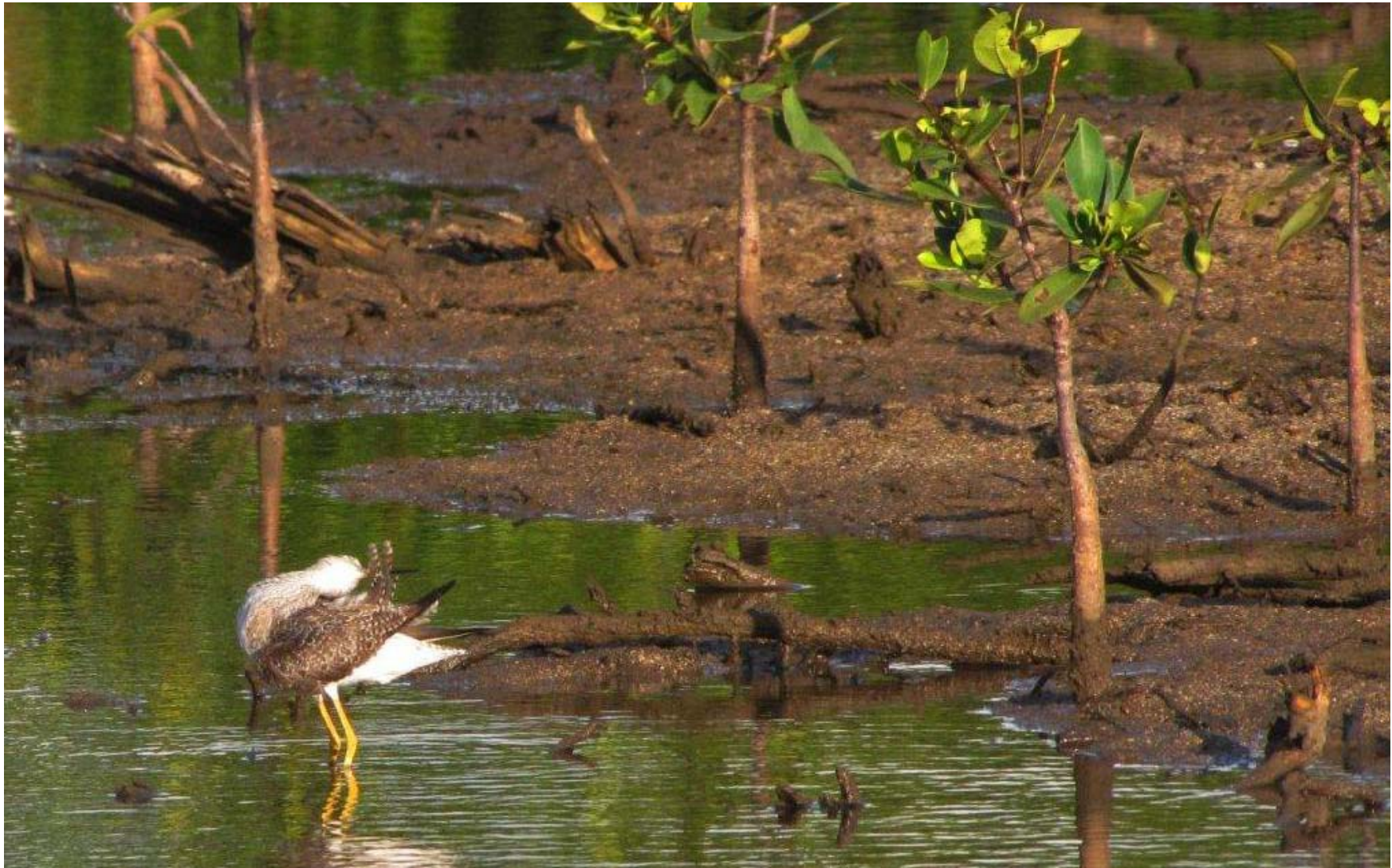
SWMU 6 – Immediately After Removal (2009)



SWMU 6 – November 2010



SWMU 6 – February 2011



SWMU 6 – Lagoon Inhabitant (Fiddler Crab) identified during Ecological Survey



SWMU 6 – Supplemental Sampling



SWMU 6 – Collecting Soil Samples



SWMU 6 – Collecting Soil Samples



SWMU 6 – Collecting Sediment with a Ponar Dredge (like a clam shell)



SWMU 6 – Retrieving the Sediment Sample



SWMU 6 – Sediment Placed in Stainless Steel Bowl



SWMU 6 – Putting the Sediment Samples into Sample Containers



East Vieques
Eastern Conservation Area (ECA)
Remedial Investigation

ECA - Status



- **Site History**

- Designated Wilderness Area (133 acres)
- Adjacent to Live Impact Area (LIA), where naval gunfire and air-to-ground bombing took place
- Presence of munitions-related items at ECA likely due to misfires and overshoots from the LIA

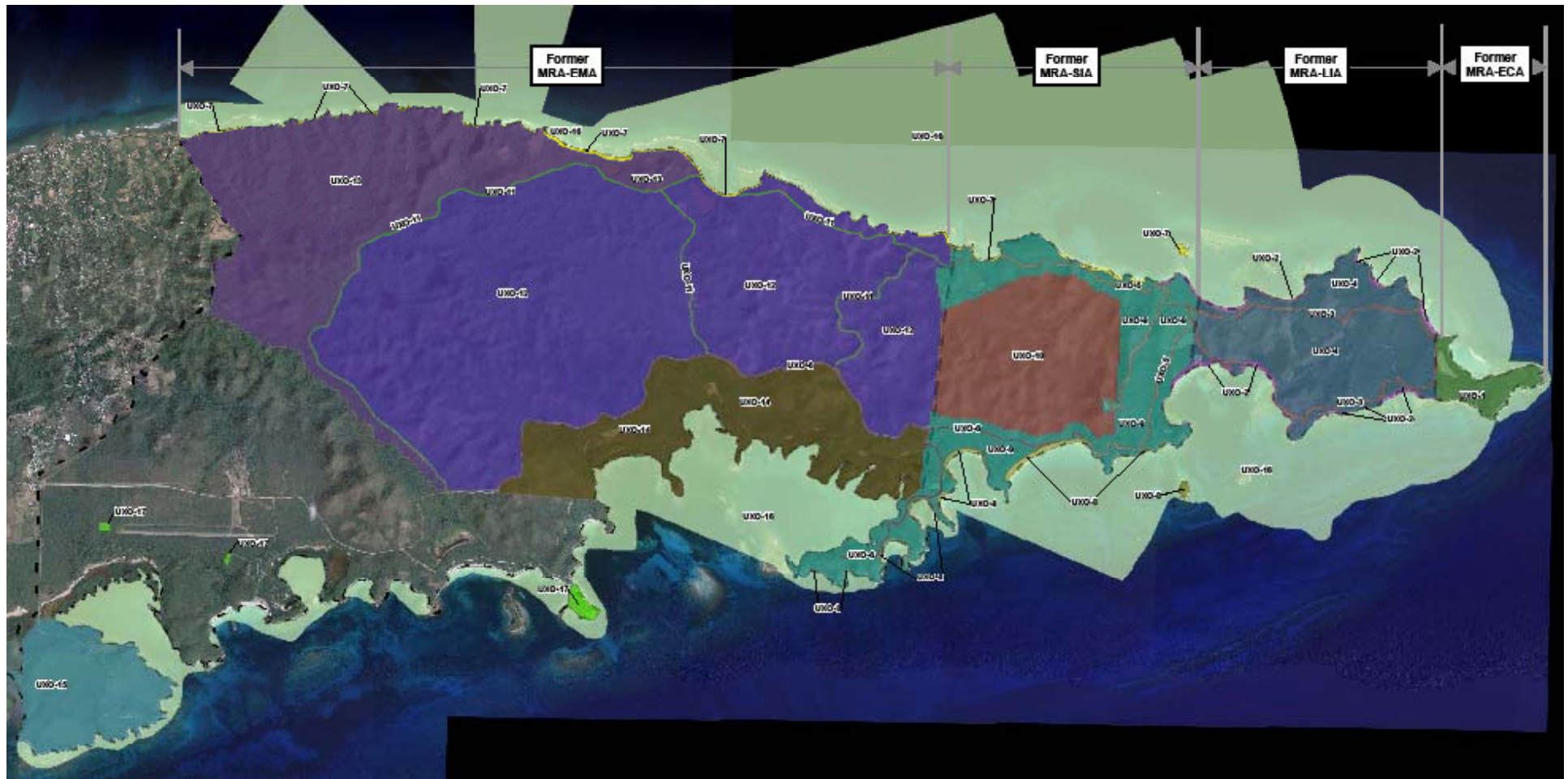
- **Removal Action**

- Removal of munitions-related items on the ground surface between 2005 and 2009
- Removal of munitions-related items in the subsurface of beaches and roads is ongoing

- **Current Activities**

- Soil, surface water, and sediment samples are being collected to evaluate site conditions

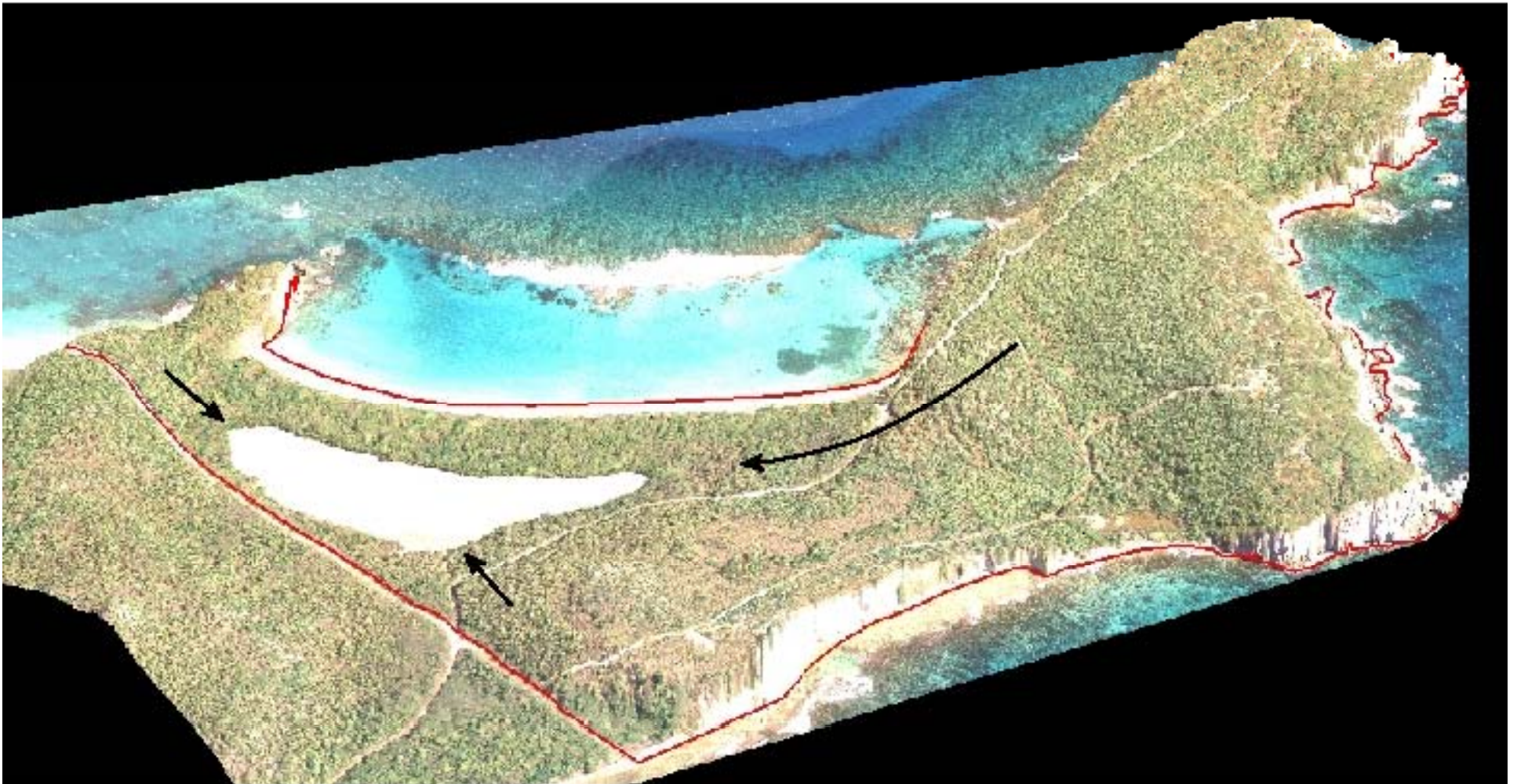
East Vieques Munitions Sites



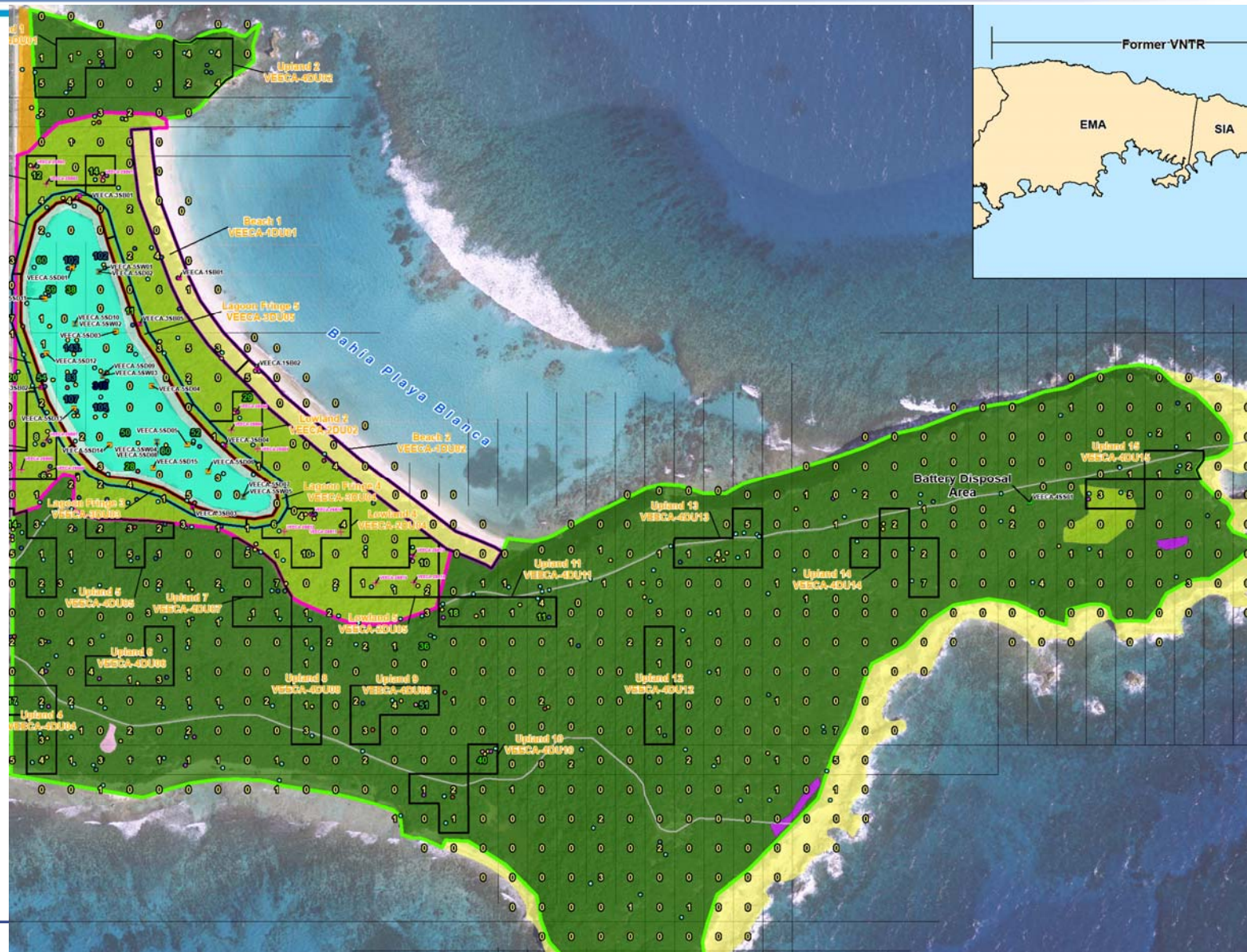
ECA



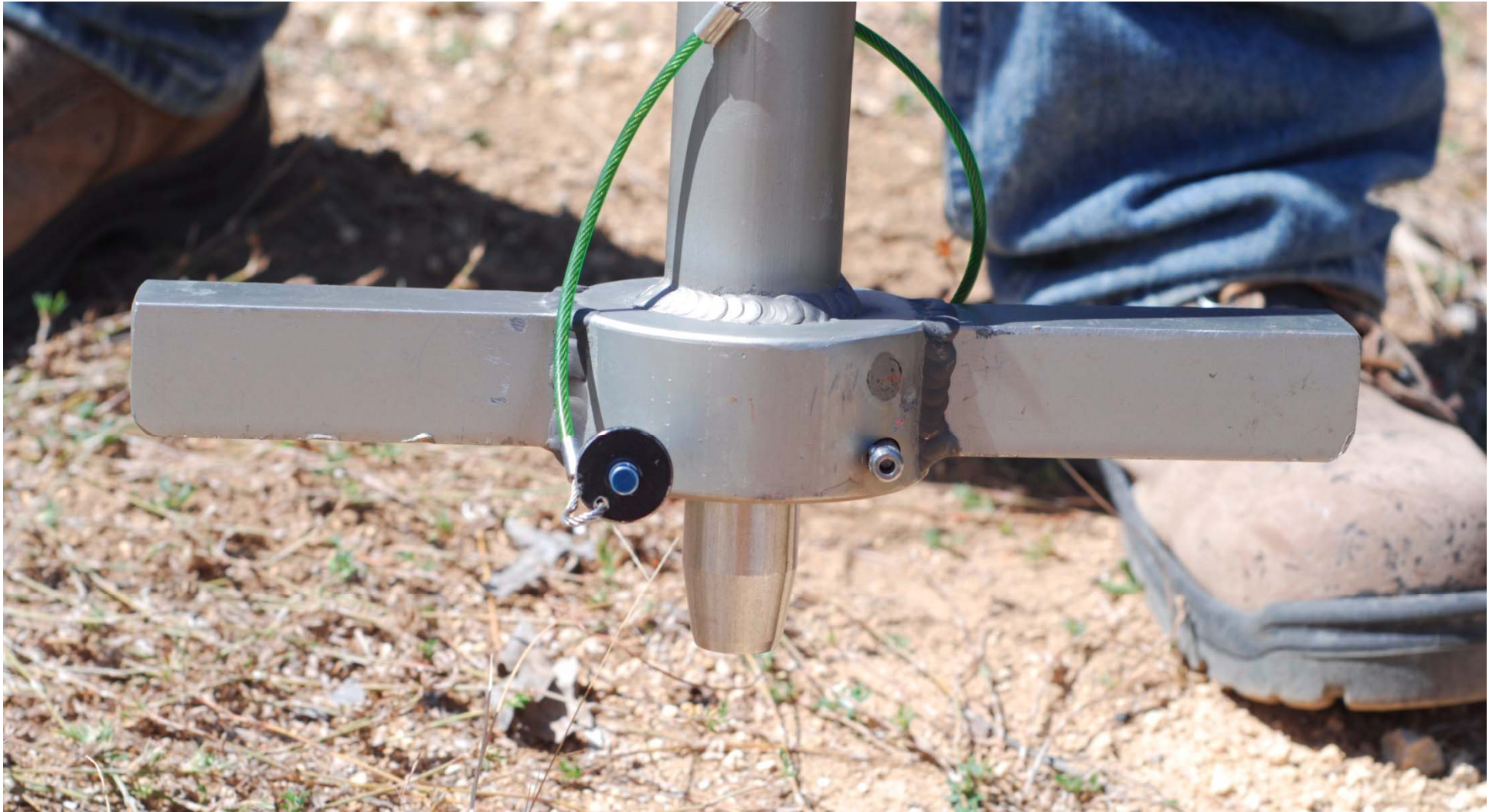
ECA Topography and Drainage



ECA Decision and Sampling Units



Multi-incremental Sampling (MIS) Sampler



Collecting a Surface Soil Sample in the ECA with the MIS Sampler



ECA Surface Soil Sample in the MIS Sampler



ECA Surface Soil Sample from MIS Sampler



Collecting ECA Shallow Subsurface Soil Samples with a Hand Auger



Collecting ECA Deeper Subsurface Soil Samples with a Slide Hammer



Upcoming Documents for RAB Review



- **2nd Calendar Quarter (April – June) 2011**
 - Draft Final Remedial Investigation/Feasibility Study Report for east Vieques Solid Waste Management Unit (SWMU) 1
 - Draft Final Expanded Site Inspection Sampling and Analysis Plan for east Vieques UXO-15

Questions?