

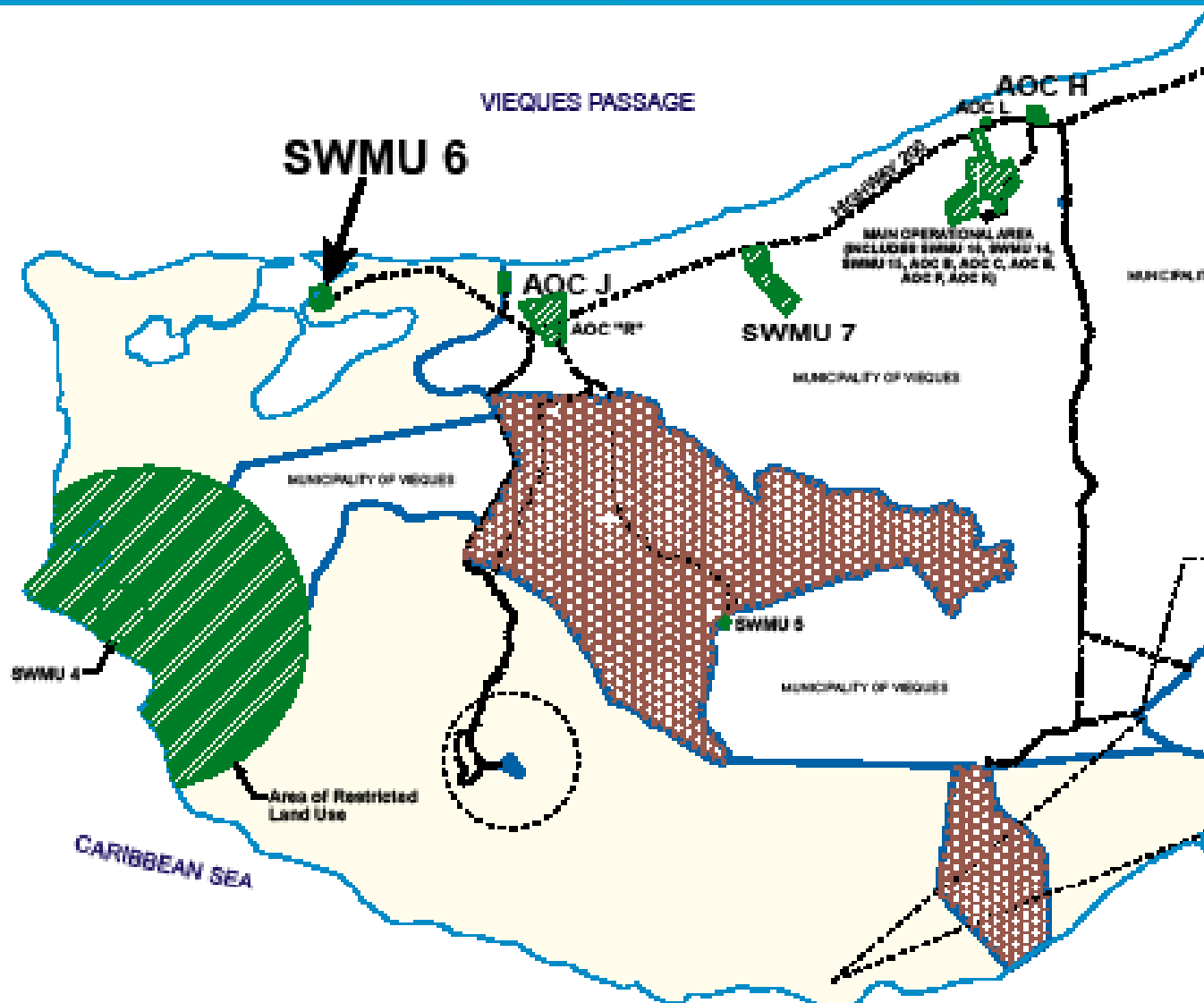


SWMU 6 Post-Removal Supplemental Confirmation Sampling Fish and Crab Collection

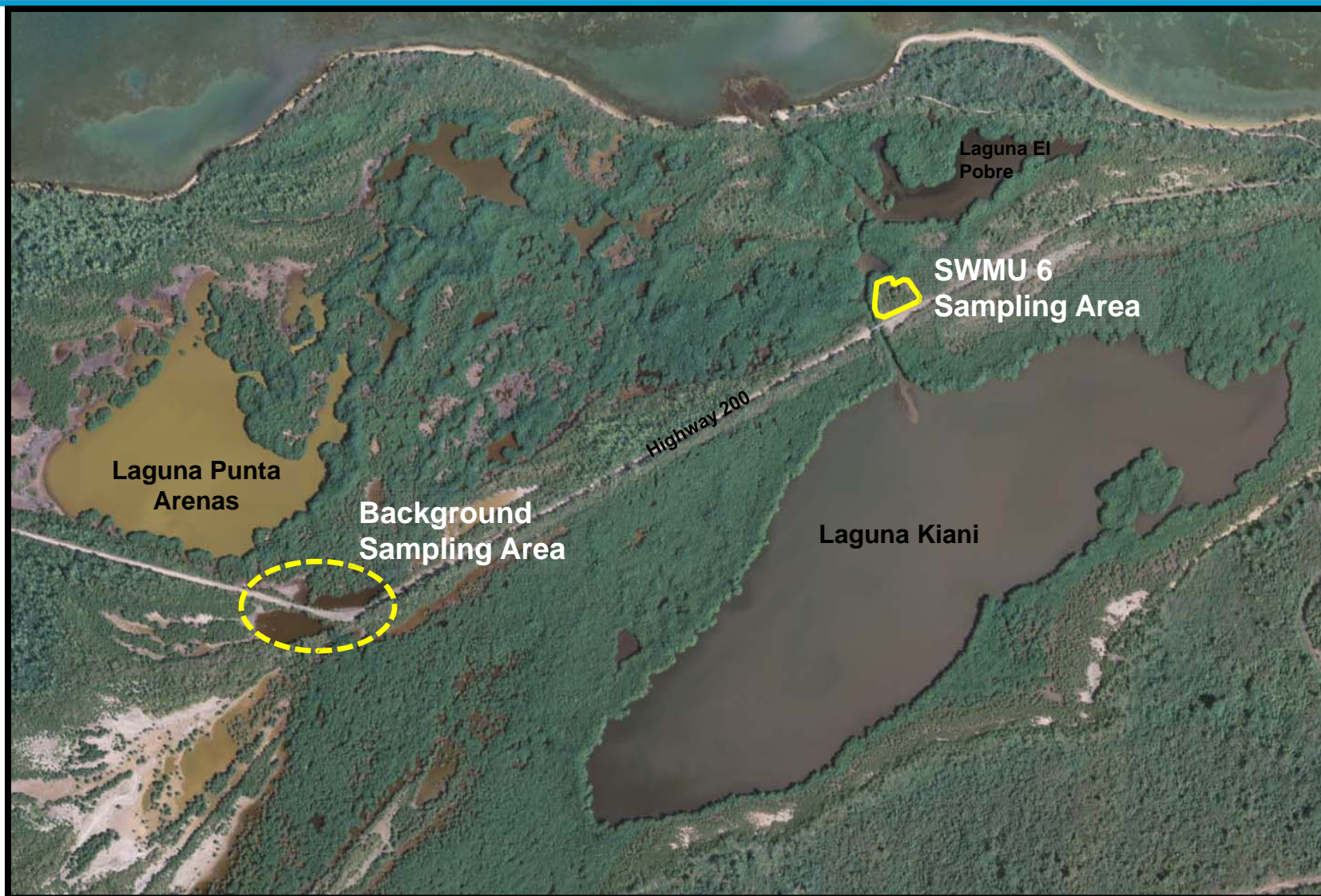
RAB Meeting

March 13, 2012

SWMU 6 – Location



SWMU 6 and Background Sampling Areas



SWMU 6 – Fish and Crab Sampling Objective



Refine risk estimates for fish and crab consumption by people:

- Based on sediment and surface water data
- Initial estimates indicated fish/crab should be evaluated for various metals and PCBs



SWMU 6 – Fish and Crab Collection Methods



Sampling was conducted the week of January 30, 2012

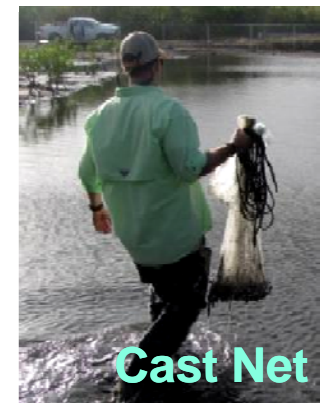
Oversight was done by members of the **EPA** (Daniel Rodriguez), **PREQB** (Wilmarie Rivera), **NOAA** (Diane Wehner), and **USFWS** (Felix Lopez)

Most catches were made on first day

Sampling was conducted at SWMU 6, as well as from a nearby background lagoon (Laguna Arenas)

Collection methods included the use of:

- Cast nets
- Crab traps
- Gill nets
- Seines
- Dip nets



SWMU 6 – Collection Results



SWMU 6

2 - Snook
2 - Mullet
4 - Blue crab

Laguna Arenas

2 - Snook
2 - Mullet
4 - Blue crab

All fish and crabs were measured, weighed, packaged, and shipped frozen to the chemistry lab. Analysis is underway.

