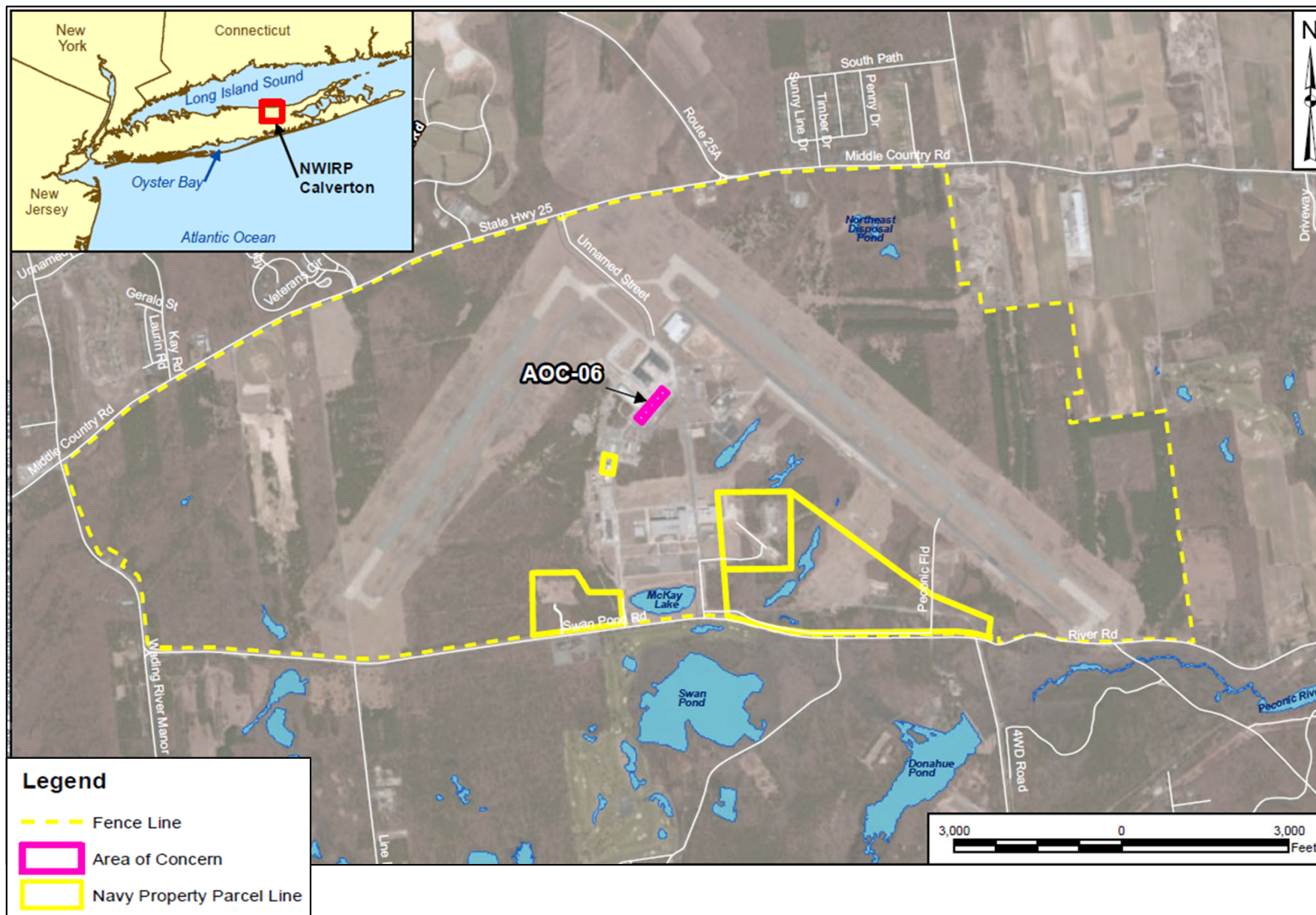


AOC-06 Per- and Polyfluoroalkyl Substances (PFAS) Supplemental Site Inspection Results Summary

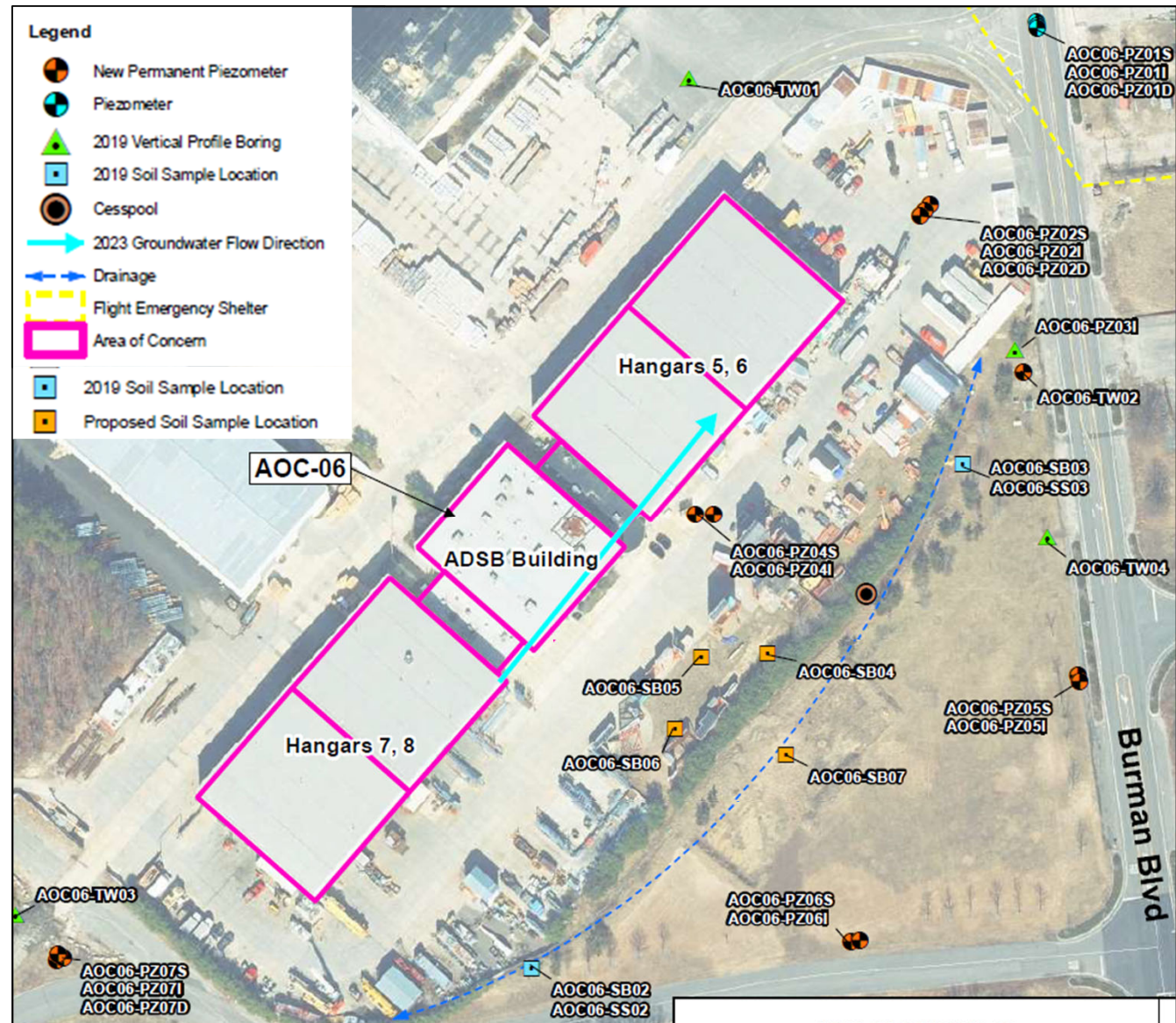
**Presented by:
Tetra Tech, Inc
NAVFAC Mid-Atlantic
06 December 2023**

Site Location Map



Fieldwork Summary

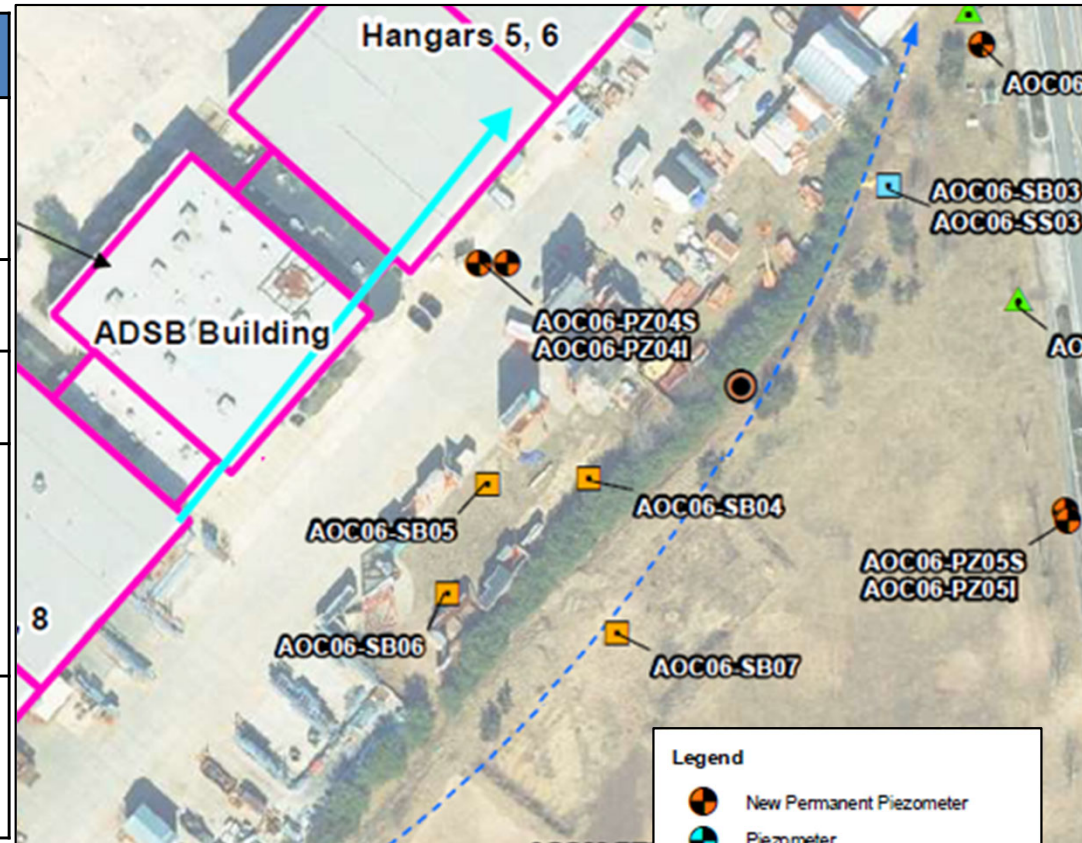
- 13 Piezometers installed and developed.
- Groundwater elevation measurements collected.
- Soil Sampling:
 - 12 samples collected from 4 borings at surface, shallow surface, and deep intervals.
- Groundwater Sampling:
 - 16 samples collected from 16 piezometers installed at various intervals (shallow, intermediate, and deep).
 - Samples sent to Battelle to determine PFAS concentrations.



Soil Analytical Results Summary



Soil SI	PFOA	PFOS	PFNA
EPA RSL (µg/kg)	19	13	19
Detections	12	10	12
Exceedances	0	0	0
Maximum Concentration (µg/kg)	0.25	0.32	0.57
Location of Maximum	AOC06 -SB05	AOC06 -SB04	AOC06 -SB05



- **Detections did not exceed 1 microgram per kilogram (µg/kg).**
- **1 µg/kg = 1 part per billion.**

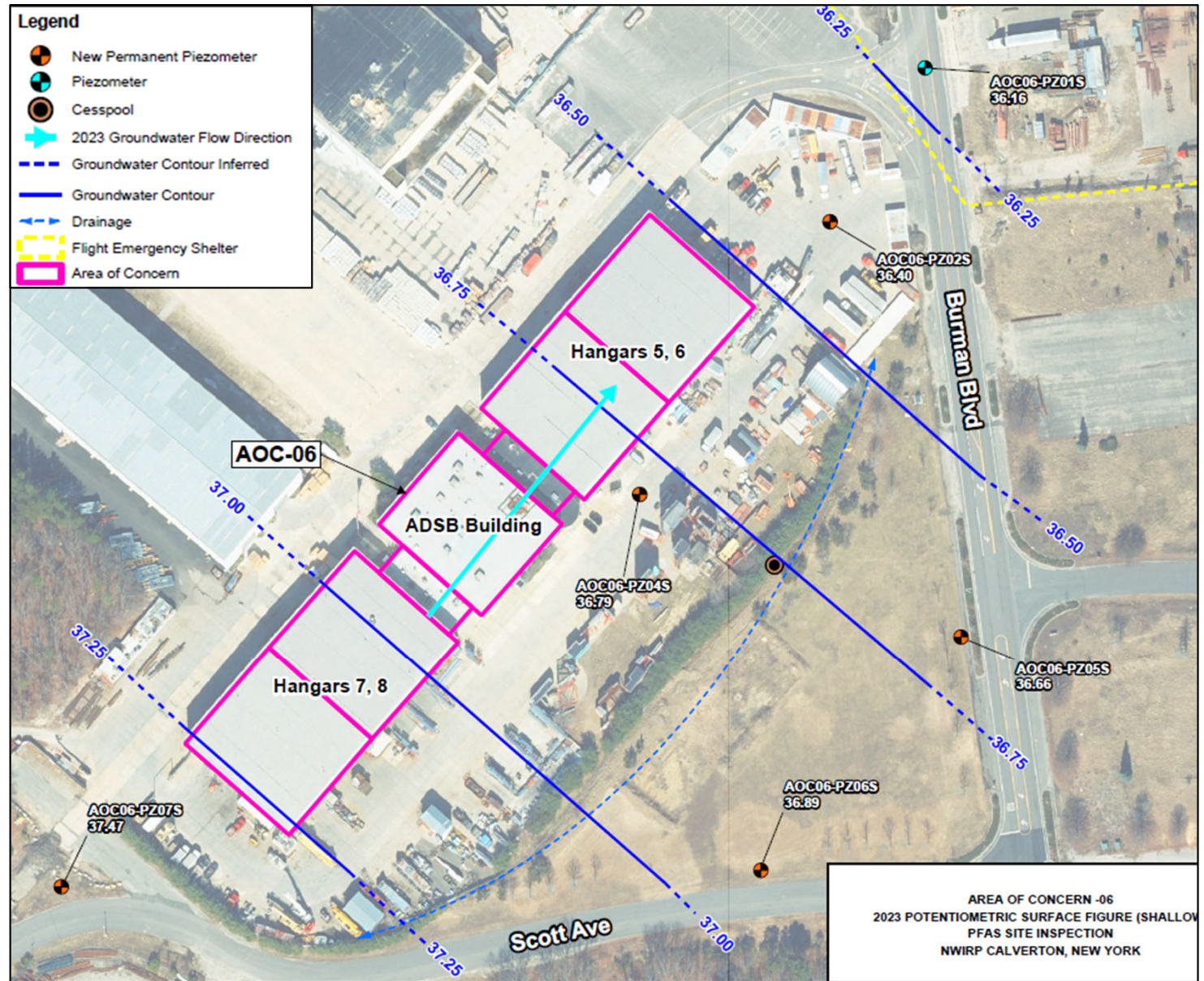
Note: SI project screening levels are the November 2023 USEPA Regional Screening Levels (RSLs) for residential soil.



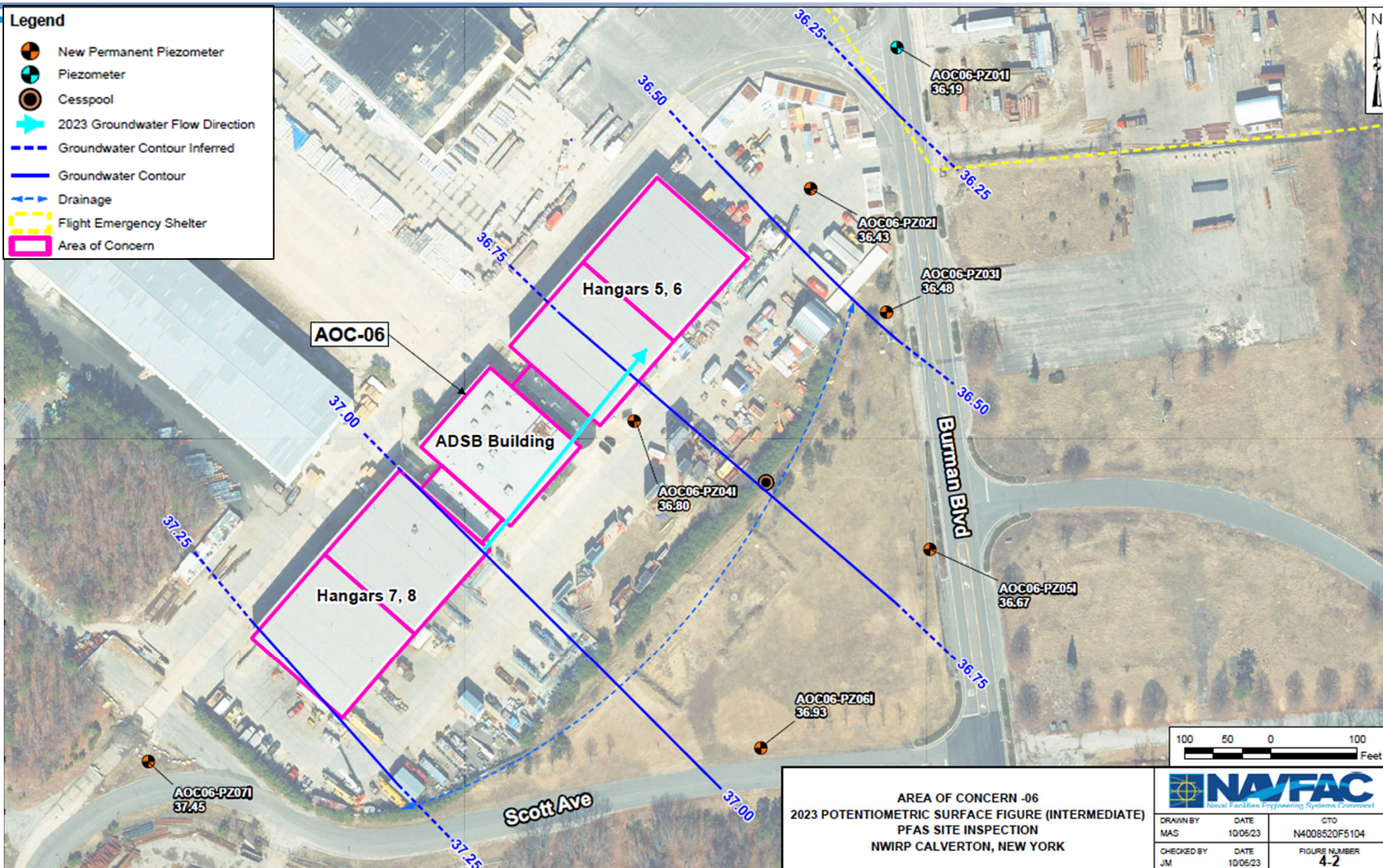
Shallow Groundwater Flow Direction



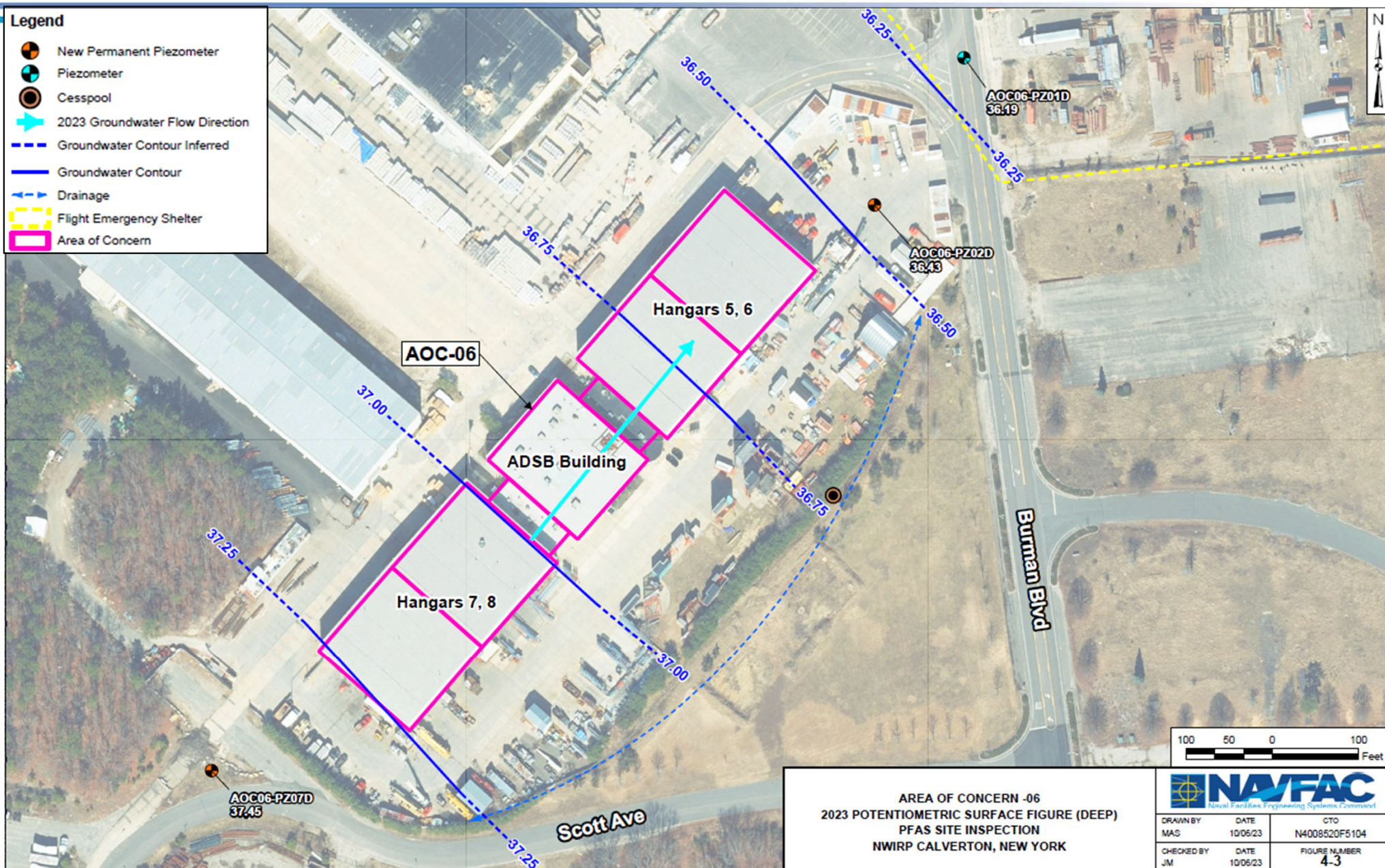
- Groundwater flow direction confirmed to the northeast at the shallow, intermediate, and deep intervals.



Intermediate Groundwater Flow Direction



Deep Groundwater Flow Direction

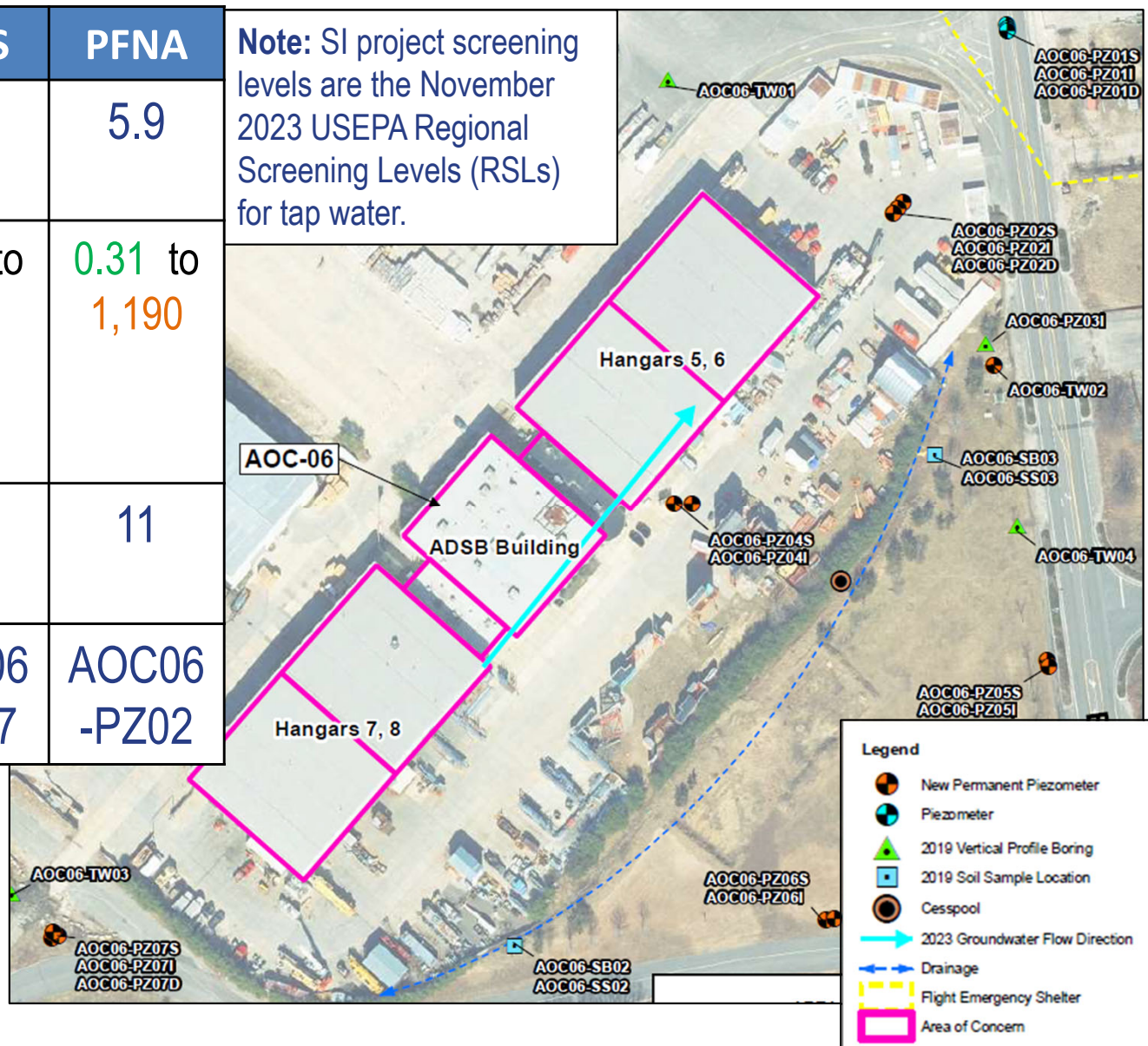


Groundwater Analytical Results Summary



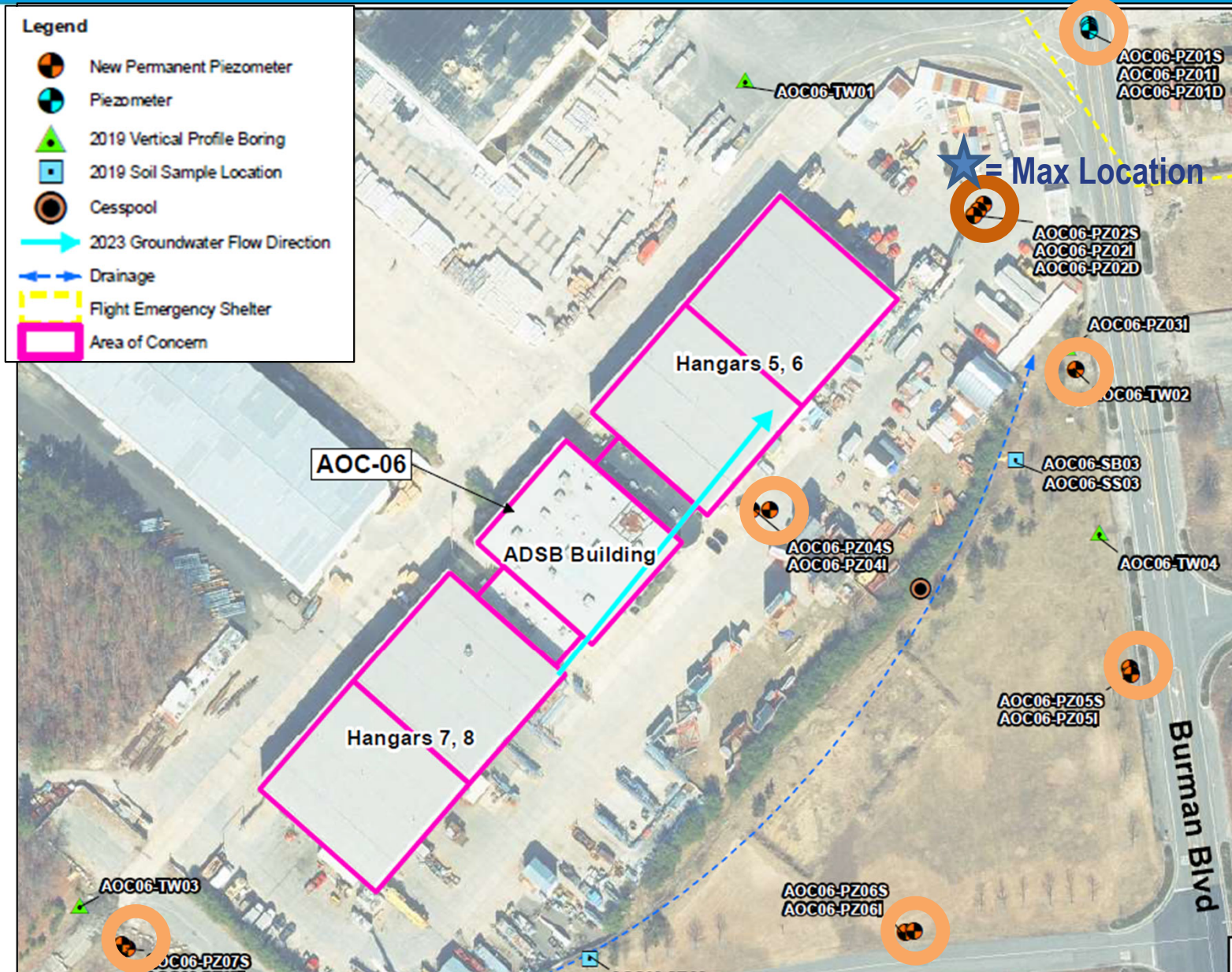
Groundwater SI	PFOA	PFOS	PFNA
EPA RSL (ng/L)	6	4	5.9
Range of Detected Concentrations (ng/L)	0.33 to 60.3	0.45 to 56.7	0.31 to 1,190
Number of Exceedances	11	7	11
Location of Maximum	AO06- PZ02	AOC06 -PZ07	AOC06 -PZ02

Note: SI project screening levels are the November 2023 USEPA Regional Screening Levels (RSLs) for tap water.



- PFAS detected in all wells.
- 1 nanogram per liter (ng/L) = 1 part per trillion

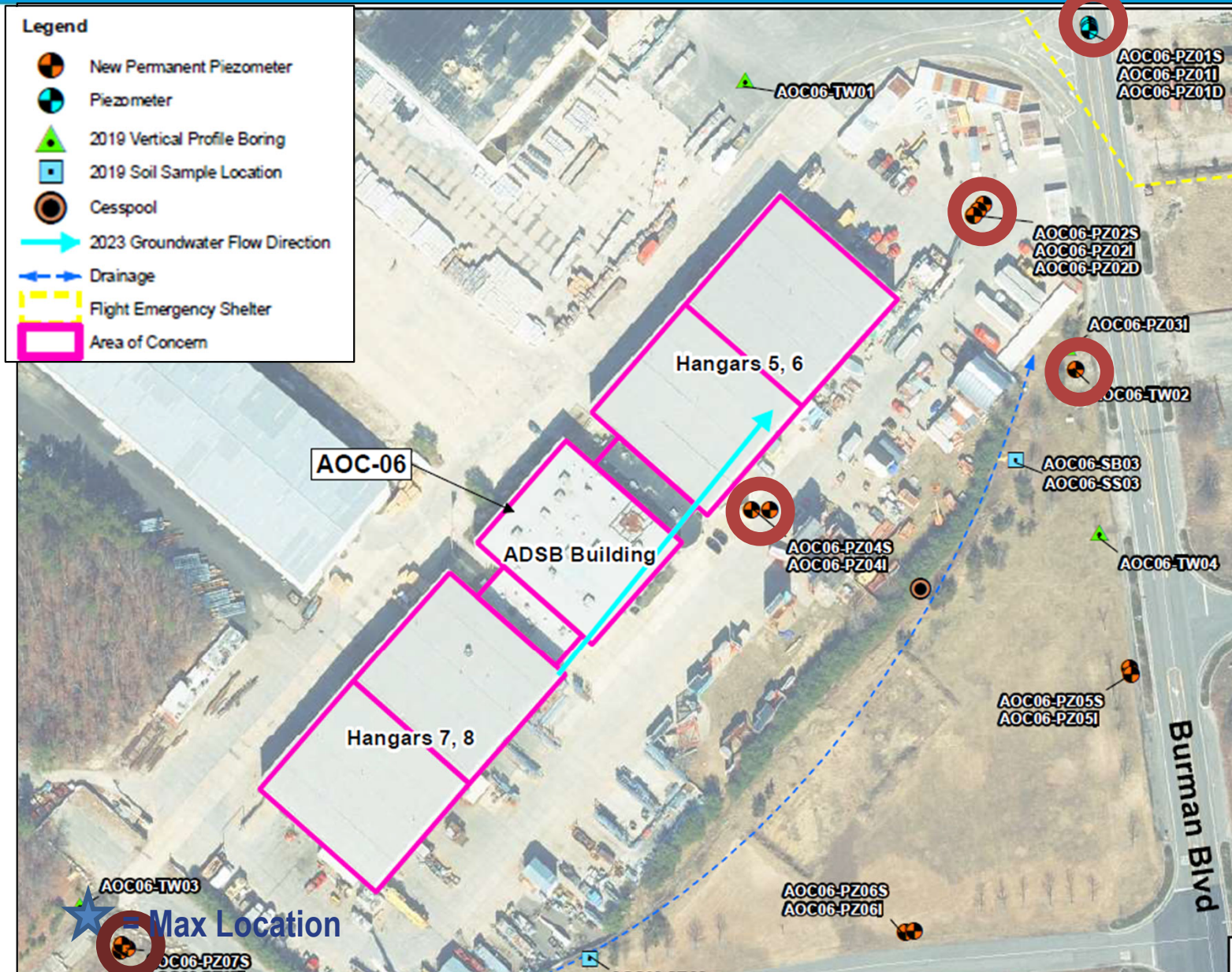
PFOA in Groundwater



- RSL = 6 ng/L
- 11 exceedances
- Max = 60.30 ng/L
- Location of max: PZ02S (starred on map).

- = exceed RSL
- = exceed x10 RSL
- = exceed x100 RSL (none)

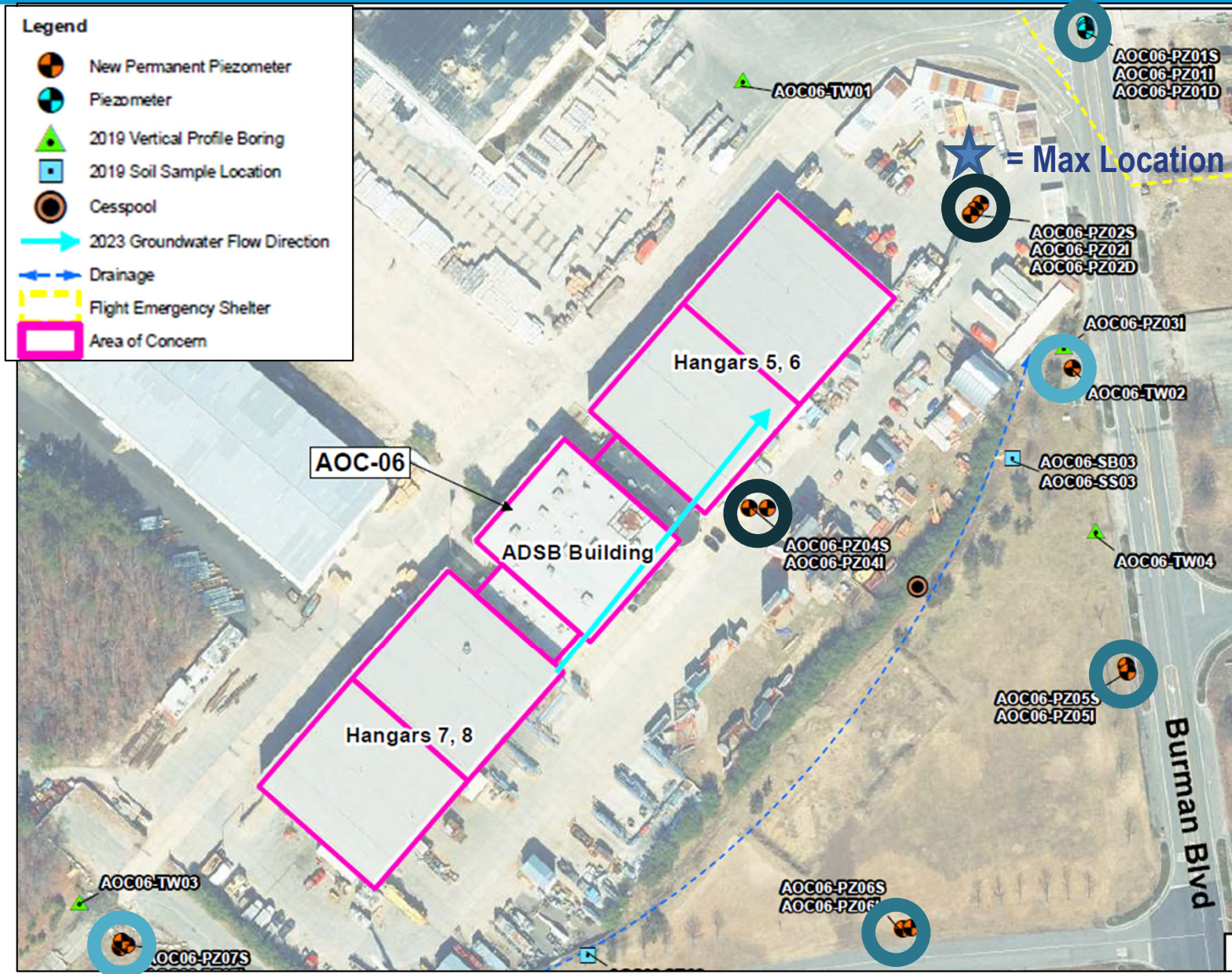
PFOS in Groundwater



- RSL = 4 ng/L
- 7 exceedances
- Max = 56.70 ng/L
- Location of max: PZ07S (starred on map).

- = exceed RSL
- = exceed x10 RSL
- = exceed x100 RSL (none)

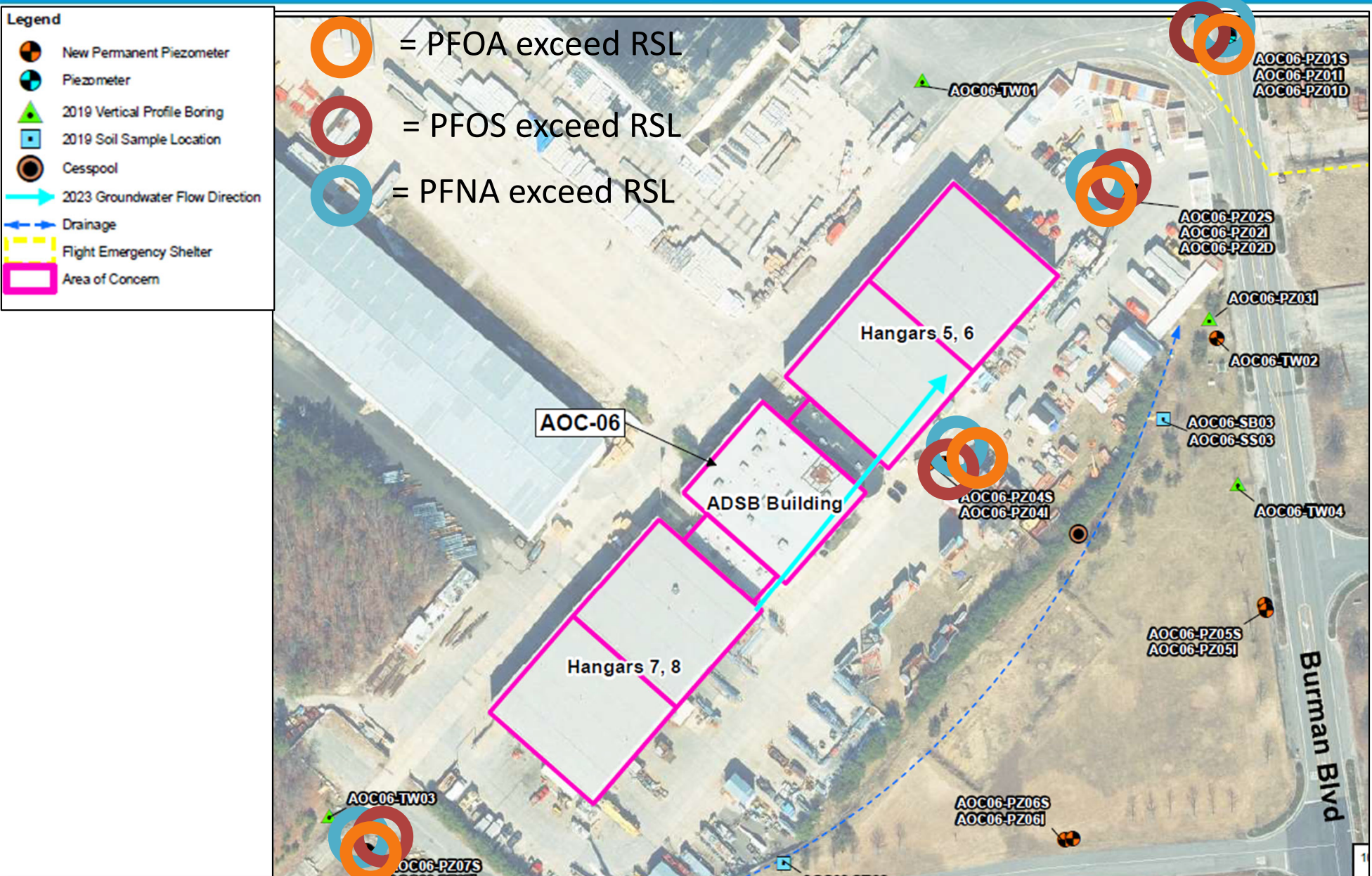
PFNA in Groundwater



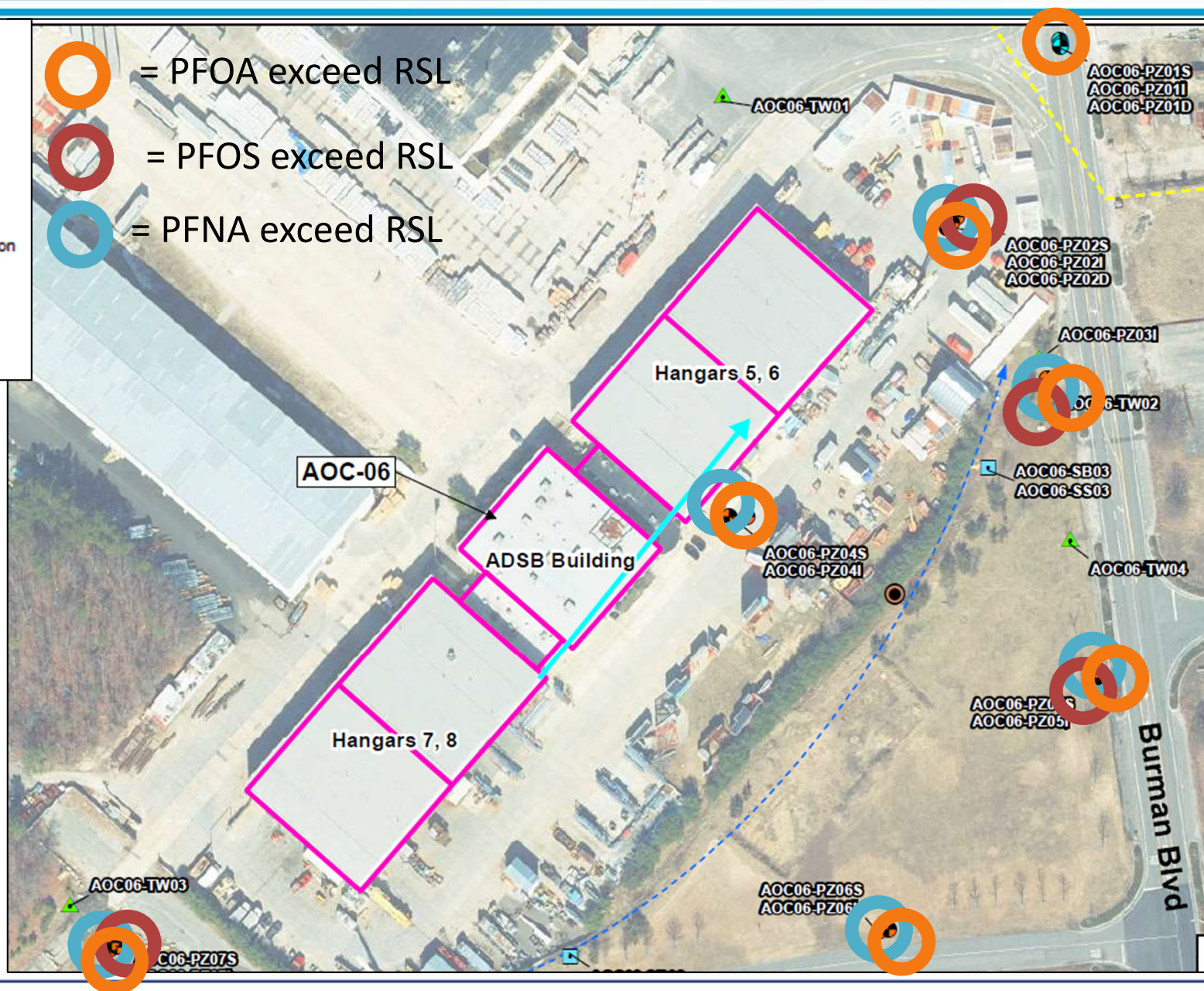
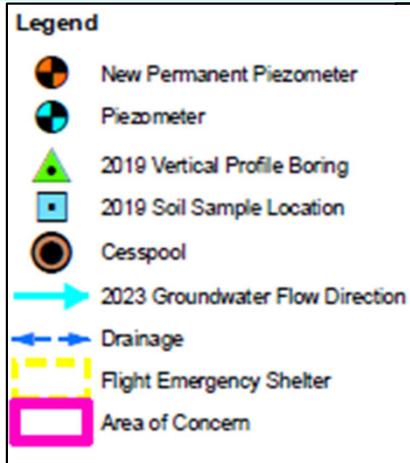
- RSL = 5.9 ng/L
- 11 exceedances
- Max = 1190 ng/L
- Location of max: PZ02S (starred on map).

- = exceed RSL
- = exceed x10 RSL
- = exceed x100 RSL

Shallow Groundwater











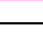
Intermediate Groundwater






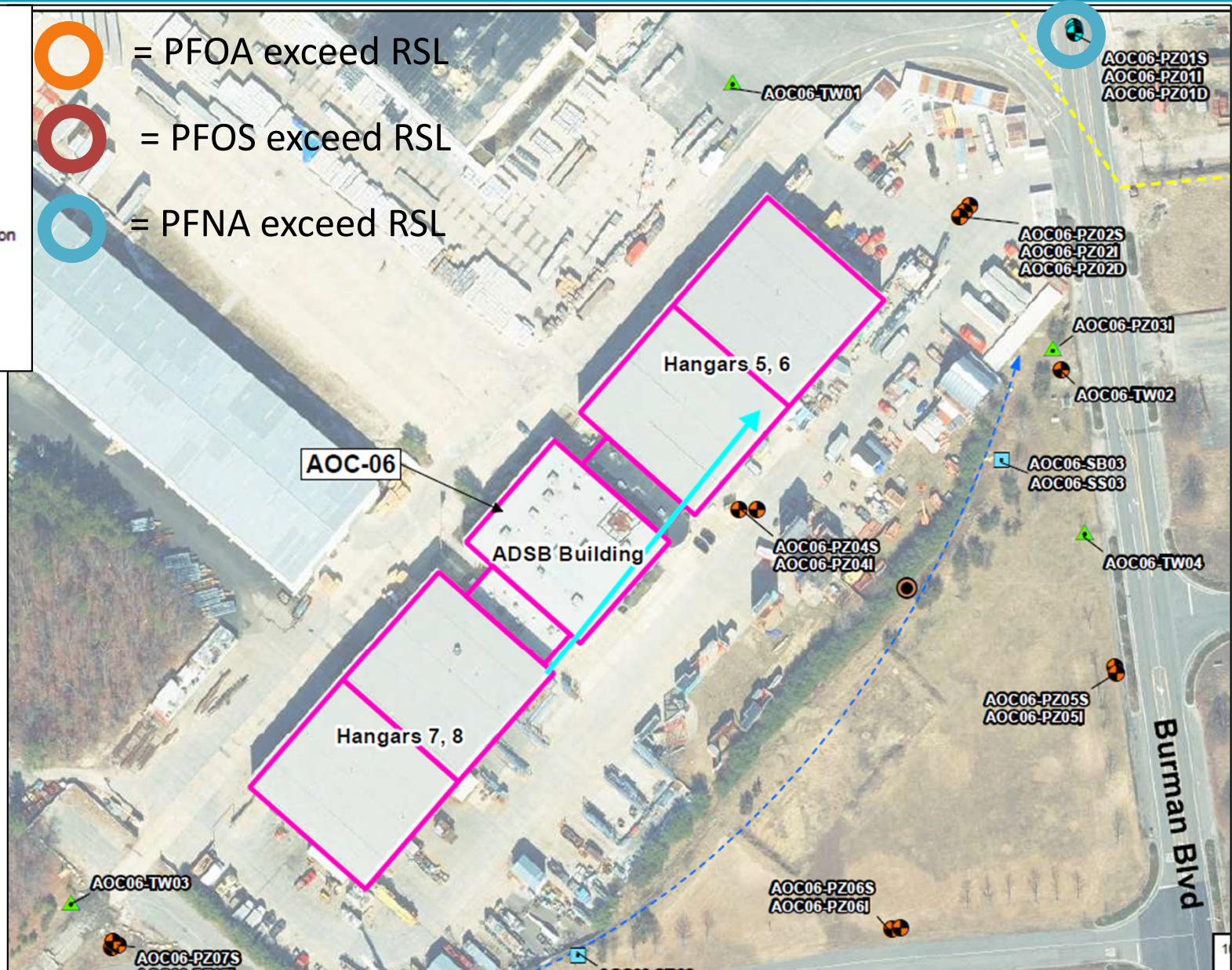
Deep Groundwater



Legend

-  New Permanent Piezometer
-  Piezometer
-  2019 Vertical Profile Boring
-  2019 Soil Sample Location
-  Cesspool
-  2023 Groundwater Flow Direction
-  Drainage
-  Flight Emergency Shelter
-  Area of Concern

-  = PFOA exceed RSL
-  = PFOS exceed RSL
-  = PFNA exceed RSL



QUESTIONS?