



# OLF Brewton Confirmed and Potential PFAS Release Areas

## TO REQUEST SAMPLING

call  
844-NASWFLD  
(844-627-9353)

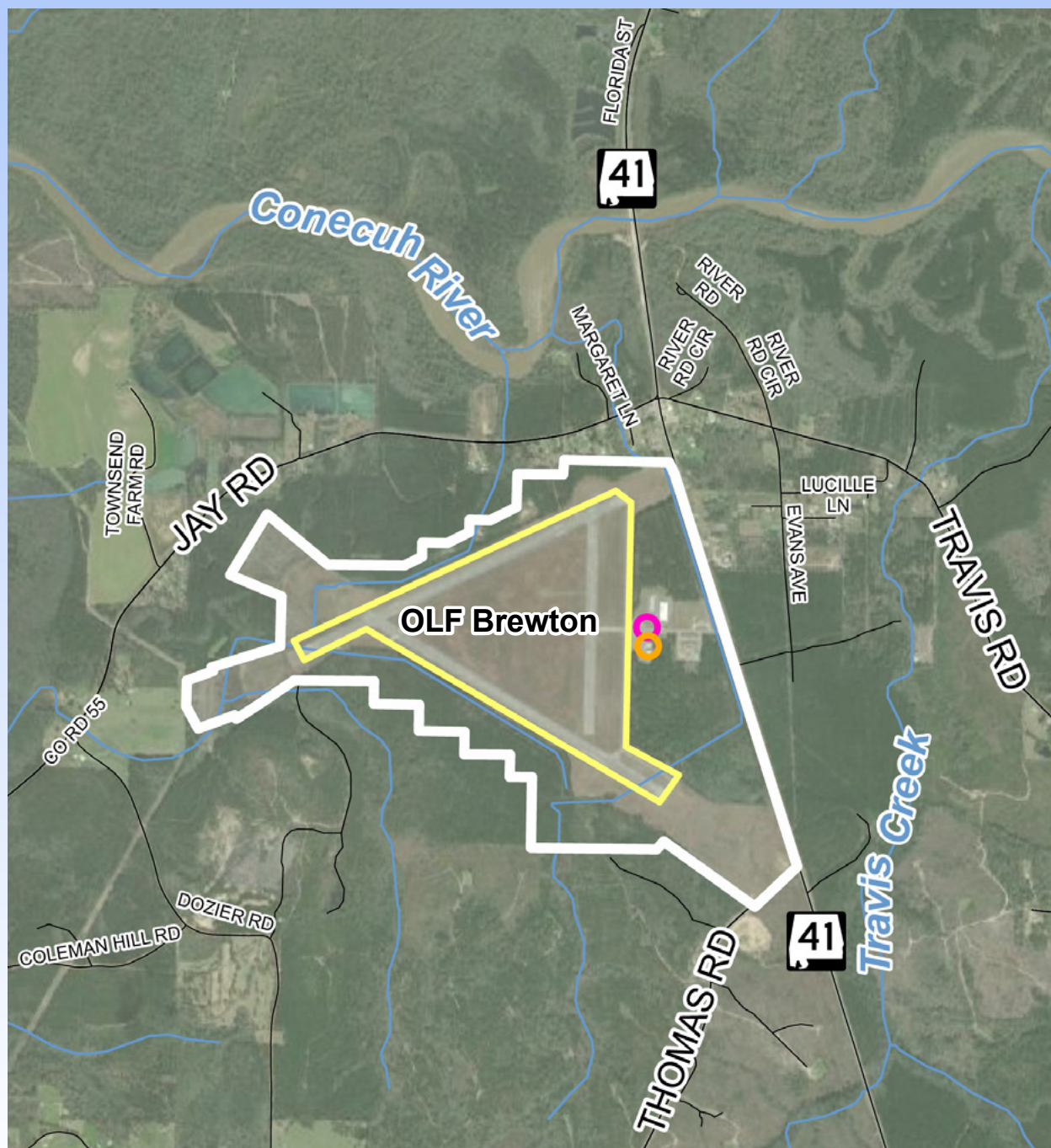
visit  
<http://go.usa.gov/xAEQF>  
or scan the  
QR code ↓



## ACRONYMS & ABBREVIATIONS

OLF Outlying Landing Field

PFAS per- and  
polyfluoroalkyl  
substances



- Further investigation is underway because of previous uses of firefighting foam at OLF Brewton.
- The Navy is following the well-established federal statutory/regulatory environmental cleanup process for assessment of and response to PFAS releases.
- Two on-base areas have been identified as confirmed or potential PFAS release areas.
- Findings are documented in a Preliminary Assessment Report, which will be completed in 2021 and available in the Administrative Record:  
<http://go.usa.gov/xAEQF>.

## LEGEND

- Confirmed PFAS release area
- Potential PFAS release area
- Runways
- OLF boundary
- Surface water

0 0.5 1 mile  
N





# Off-Base PFAS Drinking Water Investigation

## TO REQUEST SAMPLING

call  
844-NASWFLD  
(844-627-9353)

visit  
<http://go.usa.gov/xAEQF>

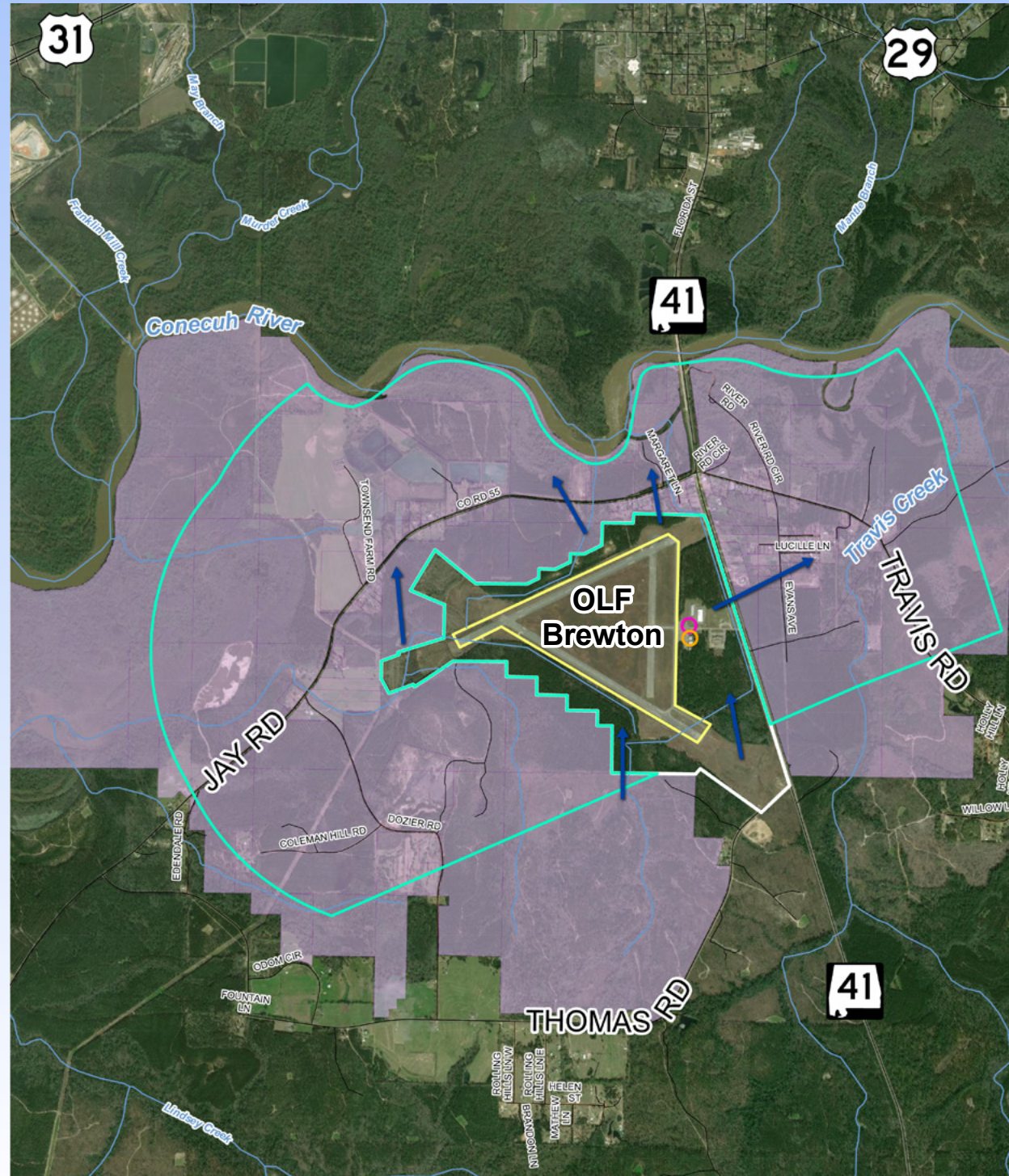
or scan the  
QR code ↓



## ACRONYMS & ABBREVIATIONS

OLF Outlying Landing Field

PFAS per- and  
polyfluoroalkyl  
substances



## The Navy needs your help to sample your drinking water well.

- The sampling area includes properties within 1 mile in the direction of groundwater flow from the OLF boundary.
  - The sampling area to the north extends to the Conecuh River.
  - The area to the southeast is not included in the sampling area because groundwater does not flow from the OLF toward those properties.
- Although the runways were not identified as potential release areas, they were used to determine the sampling area to be conservative.
- If your drinking water is provided by Riverview Water Works, the Navy does not need to sample your water.
- The Navy may expand the sampling area based on the results of the current sampling of drinking water wells.

## LEGEND

- |                             |                                      |
|-----------------------------|--------------------------------------|
| Confirmed PFAS release area | Estimated groundwater flow direction |
| Potential PFAS release area | Designated sampling area boundary    |
| Runways                     | Designated sampling area             |
| OLF boundary                |                                      |
| Surface water               |                                      |

