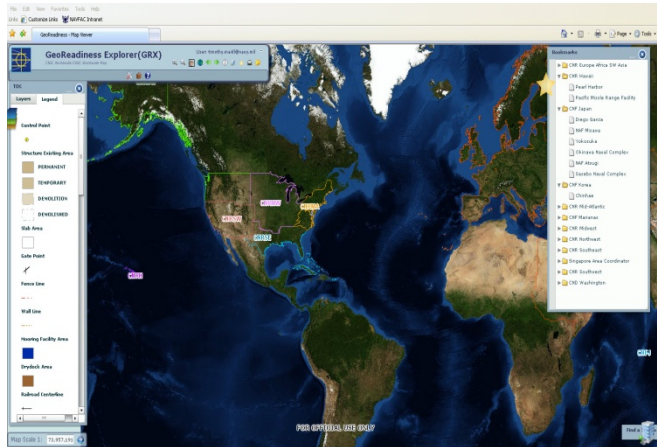


## NAVFAC HQ, AM Asset Utilization (AM4), Navy GeoReadiness IGI&S Program

The Navy GeoReadiness Installation Geospatial Information and Services (IGI&S) Program maximizes NAVFAC and CNIC use of **geographic information system (GIS)** technologies and geospatial information, allowing efficient and effective management of Navy shore infrastructure and is the geospatial component of the Navy’s Internet Naval Facilities Assets Data Store (iNFADS) authoritative database of real property assets.



The geographic scope of this program and its staff of 80+ geospatial professionals cover 70 major Navy installations on nearly 1.9 million acres of land, organized in 10 Facility Engineering Commands worldwide with a modest annual data acquisition and operation and sustainment investment. While program requirements come from a broad community of users across the globe, the scope of their applicability is for the operations and improvement of the HQ-led, enterprise serving GeoReadiness Program.



The GeoReadiness Explorer (GRX) solution is a primary web-based viewing tool that provides a seamless view of Navy shore installation geospatial map data and access to a variety of geo-enabled Navy business systems as well as the ability to overlay Navy installation maps with external web map services. GRX provides a single access point to a variety of mission essential map and imagery data worldwide. NAVFAC continues to increase the GRX value

proposition across the Installations and Environment (I&E) community by integrating GRX into business processes, enabling faster/smarter/better investment decision making. GRX is a timely, quality, cost-effective and sustainable solution that helps the Navy achieve its readiness, performance, and sustainability goals.

The value this and the other solutions GeoReadiness brings to Navy missions is the protection of human lives and Navy assets based upon improved situational awareness and reduced time to decision on the impact of planned and current base activities.

---

### ***Innovation, Leadership, Performance***

The Naval Facilities Engineering Command (NAVFAC) manages the planning, design, construction, contingency engineering, real estate, environmental, and public works support for U.S. Navy shore facilities around the world. We provide the Navy's forces with the operating, expeditionary, support and training base's they need. NAVFAC is a global organization with an annual volume of business in excess of \$18 billion. As a major Navy Systems Command and an integral member of the Navy and Marine Corps team, NAVFAC delivers timely and effective facilities engineering solutions worldwide. Additional updates and information about NAVFAC can be found on social media sites Facebook and Twitter. Become a Fan at <http://www.facebook.com/navfac>, follow us on <http://twitter.com/NAVFAC>, and visit the GeoReadiness Explorer (GRX) *Ask the Map!* Portal at: <https://portal.navfac.navy.mil/go/GeoReadiness>