

The background of the slide is a photograph of a coastal landscape in Vieques, Puerto Rico. It shows a clear blue sky, a calm blue body of water in the foreground, and a green, hilly island in the middle ground. The text is overlaid on this image in a yellow, bold, sans-serif font.

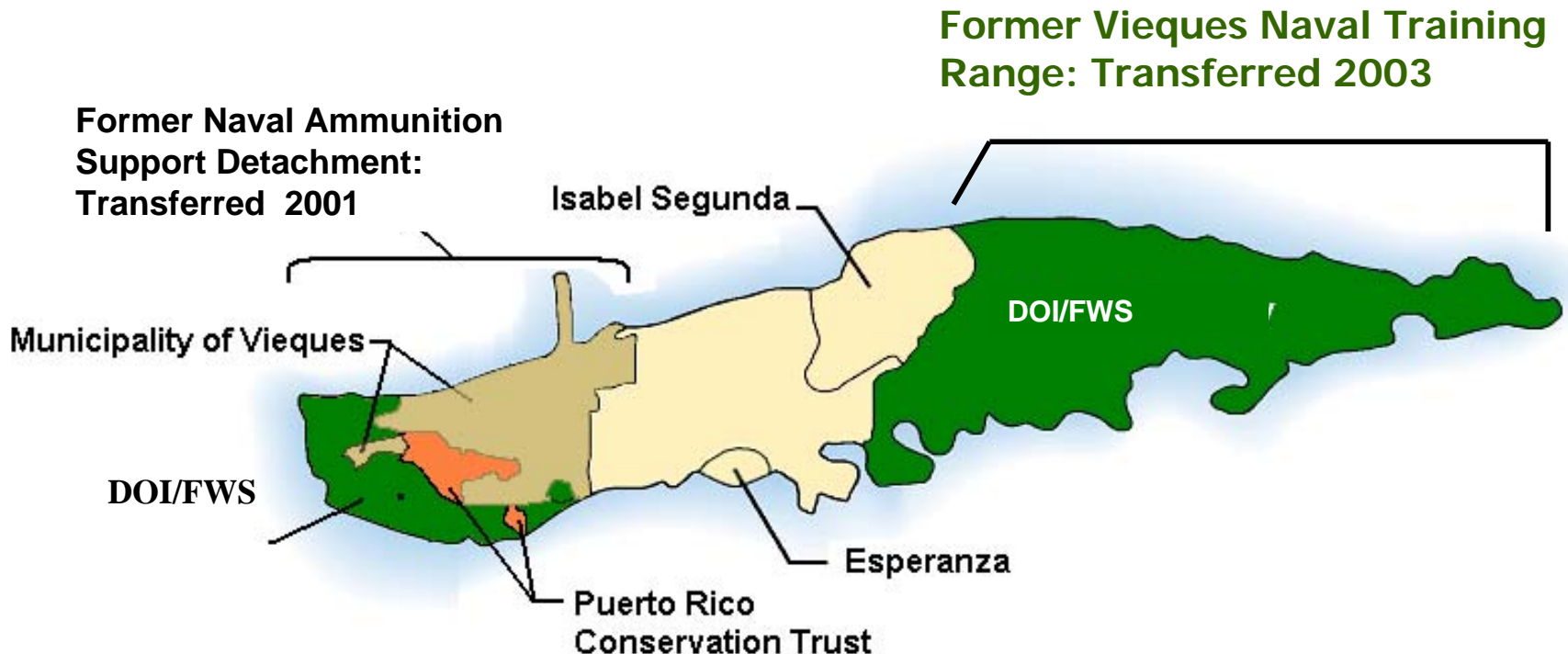
RAB Meeting
Munitions Response Program Update
Former Vieques Naval Training Range
(VNTR)
Vieques, Puerto Rico
February 7, 2008

Presentation Overview

- **Contractor Update**
- **Personnel Status**
- **TCRA Update**
- **Non TCRA Munitions Response Actions**
- **Questions/Comments**

Munitions Response Program Overall Objectives

- ❖ Conduct Munitions Response Program (MRP) investigations
- ❖ Characterize Munitions Response Sites (MRS)
- ❖ Conduct Munitions Response Actions at sites that pose unacceptable risks to human health
- ❖ Final response action objectives will be based on final land use plan



Contractor Update TCRA

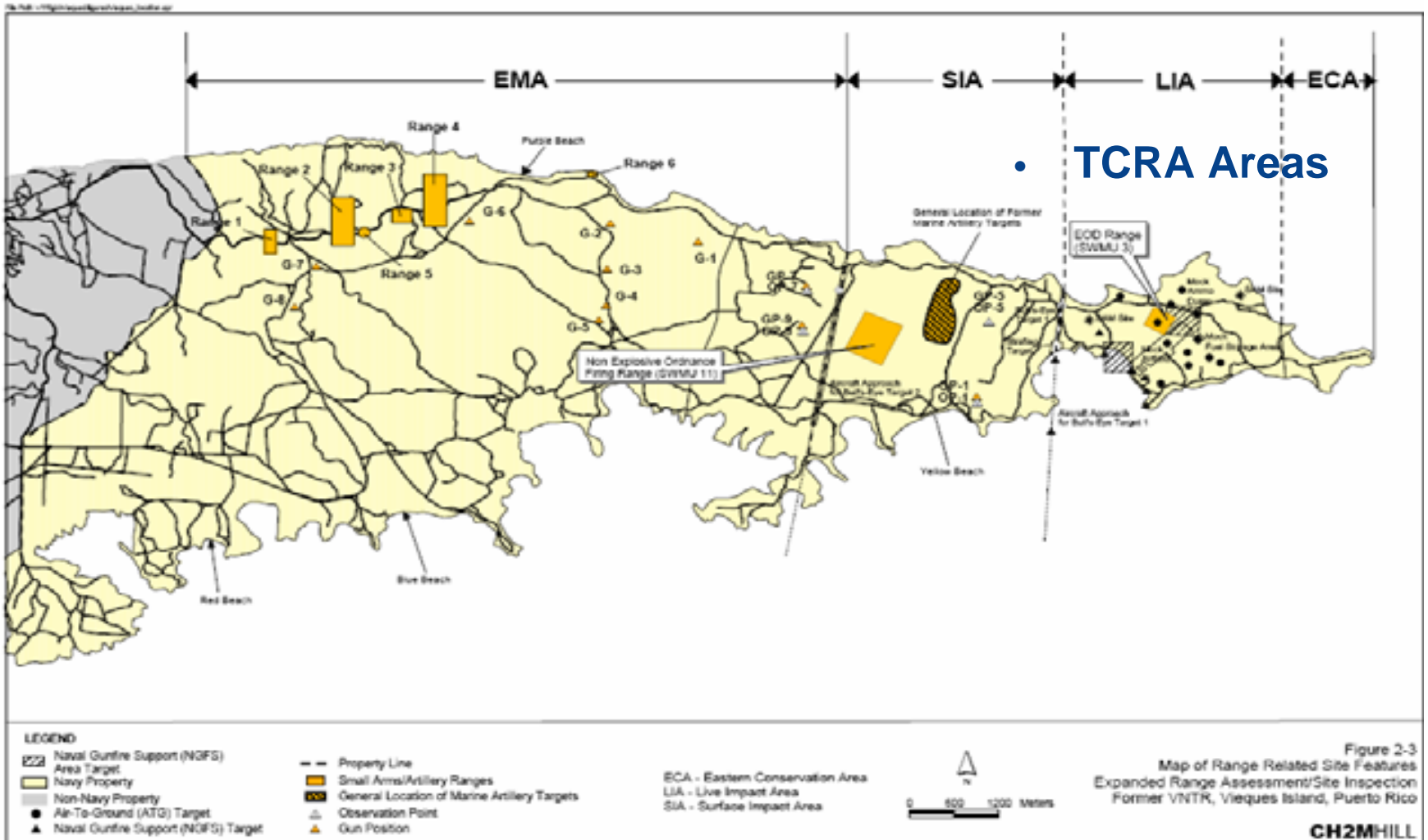
- **CH2M HILL – Title II Services**
- **USA Environmental- Removal Action Contractor (Small Business)**
- **Tri Eco/Advent- Removal Action Contractor (8A)**
- **PIKA International- CPC Contractor (8A)**

Personnel Status

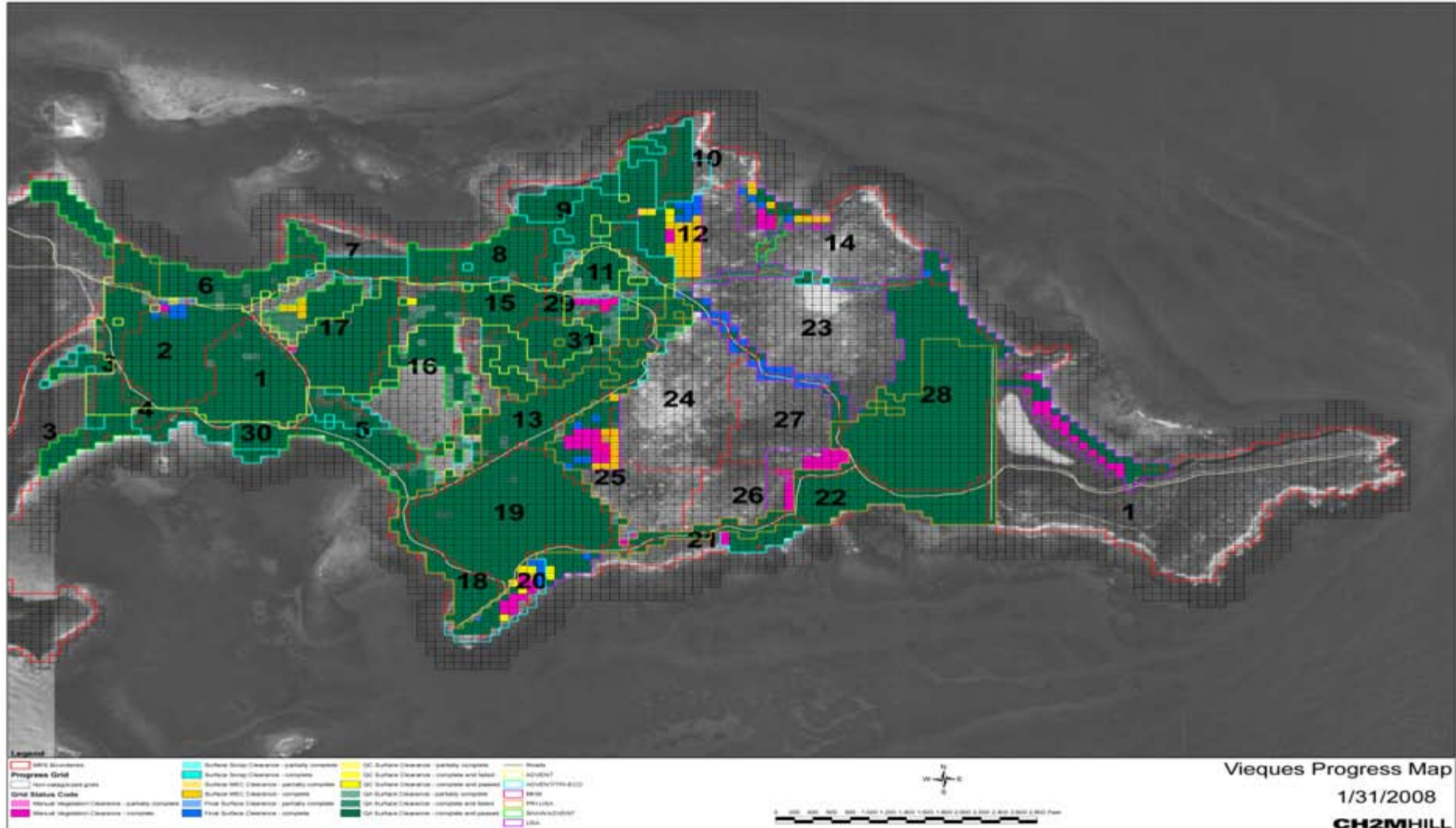


- **Approximately 112 Personnel working on site daily**
- **Approximately 82 personnel or 73 percent of the workforce are local residents**
- **USA is the largest employer with 70 personnel, 54 local residents**

Time Critical Removal Action Response Areas



TCRA Progress Map



Time Critical Removal Action

- ❖ Data through January
- ❖ 581 acres surface cleared in the Live Impact Area
- ❖ Items located requiring detonation or explosive venting
 - Live Bombs – 360
 - Inert Bombs - 3199
 - Live Projos /Mortars - 3876
 - Inert Projos /Mortars -2595
 - Live Rockets - 273
 - Inert Rockets - 62
 - Flares-Pyrotechnics - 256
 - Live ICMs - 1526





Material Processed and Shipped as of January 18, 2008

Operation	LBS	TONS
MD INSPECTION & RECOVERY	3,552,000	1776
RRD INSPECTION & RECOVERY	3,526,000	1763
TOTAL MATERIAL RECOVERED	7,078,000	3539
CHRUSHING (HAMMER MILL)	190,000	95
SHEARING (EXCAVATOR)	950,000	475
PETROGEN TORCH (CUTTING)	52,000	26
THERMAL PROCESSING	1,506,000	753
TOTAL MATERIAL SHIPPED OFF ISLAND	3,514,000	1757

Recovery and Processing of MD and RRD Update



- **Most processing operations suspended**
- **Off island shipping suspended**
- **Focus on recovery and segregating into the appropriate stream/processing operation**
- **Processing will continue when sufficient material for that particular operation is collected**
- **Off island shipment will continue when sufficient material has been processed and certified**

Non TCRA Munitions Response Actions

- **Geophysical mapping of roads and beaches**
- **Sub Surface Work Plan**
- **Engineering Evaluation Cost Analysis (EECA)**
- **Expanded Range Assessment and Phase II Site Inspection**

NTCRA Beaches & Roads

- **80 acres of beaches geophysically surveyed**
- **24 acres of roads geophysically surveyed**
- **DGM operations suspended 12 October**
- **DGM will resume when the sub-surface removal begins**

EE/CA Status

- **Draft Final EE/CA was sent to RAB (September 28) and Subcommittee (posted October 1 to website, mailed October 3)**
- **Public notice placed in El Vocero and Primera Hora**
- **Public review period is October 3 through November 5 (Review period extended to 3 December)**
- **Public comments received, are being reviewed and responses will be posted on the Vieques Public web site and included as an appendix to the final document.**

Subsurface Removal Work Plan

- **Subsurface removal work plan will be completed after receipt of comments from public review period of the EECA**
- **Hold subcommittee meeting to discuss approach (data usability procedure, periodic data reviews, depths of clearance) prior to submitting draft work plan**
 - Early December meeting
 - Late January Draft
 - Mid year (2008) Final
- **Work plan will meet intent of UFP QAPP by including the “crosswalk” table and other required worksheets as an appendix**

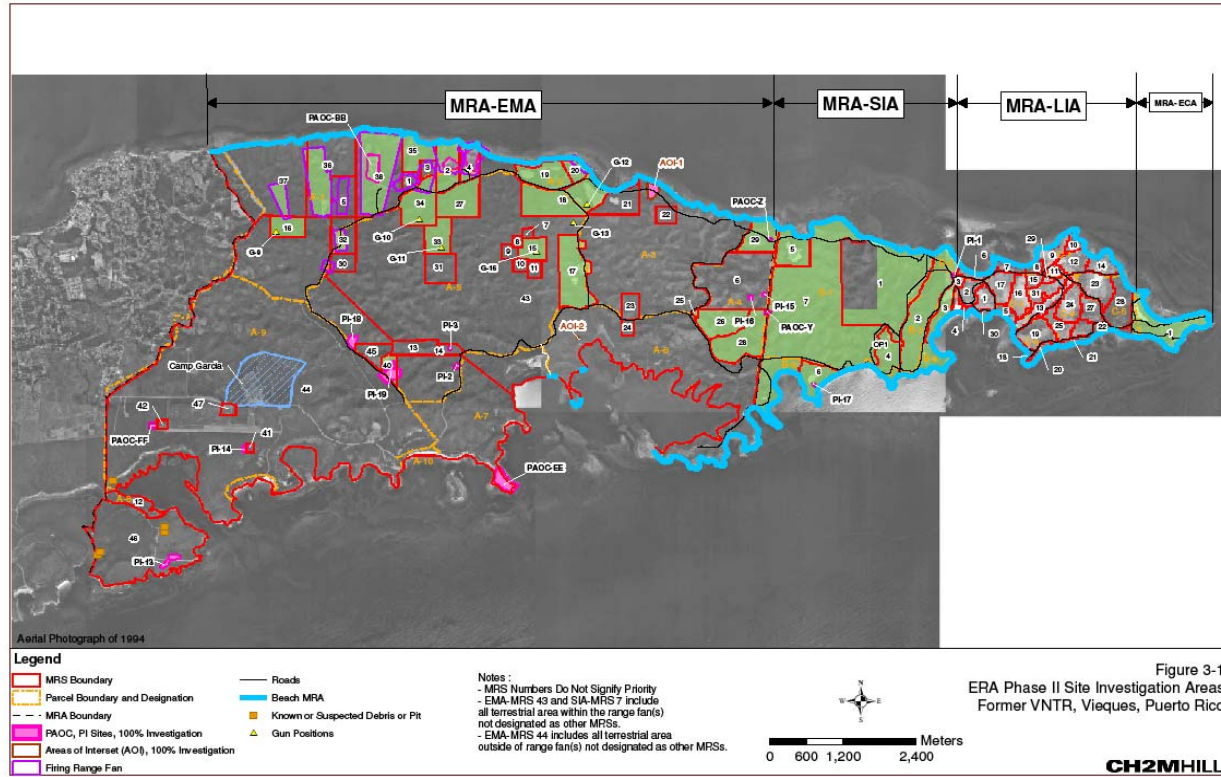
Expanded Range Assessment and Phase II Site Inspection

- **Purpose and Objectives:**
 1. **Supplement previous information regarding the types and quantities of MEC believed to be present at the MRSs investigated**
 2. **Characterize sites to confirm MRSs**
 3. **Identify types and locations of target areas**
 4. **Identify potential MRSs where no future Munitions Removal Actions are necessary (additional site information/investigation will be required before recommending no further action)**
 5. **Identify MRSs that will require further investigation in order to arrive at a response action decision**
 6. **Identify high risk MRSs that may require immediate action due to explosive safety issues**

Expanded Range Assessment and Phase II Site Inspection

- **Approximately 367 acres within the EMA, SIA and ECA will be investigated**
- **The Munitions Response Sites will be inspected using the transect approach with 10 percent of the MRS being inspected**
- **Specific Areas of Interest and Concern will be 100 percent inspected**

ERA/Phase II SI Areas



- **Questions/Comments?**

