



Department of Navy
Naval Weapons Industrial Reserve Plant Bethpage
Restoration Advisory Board Meeting

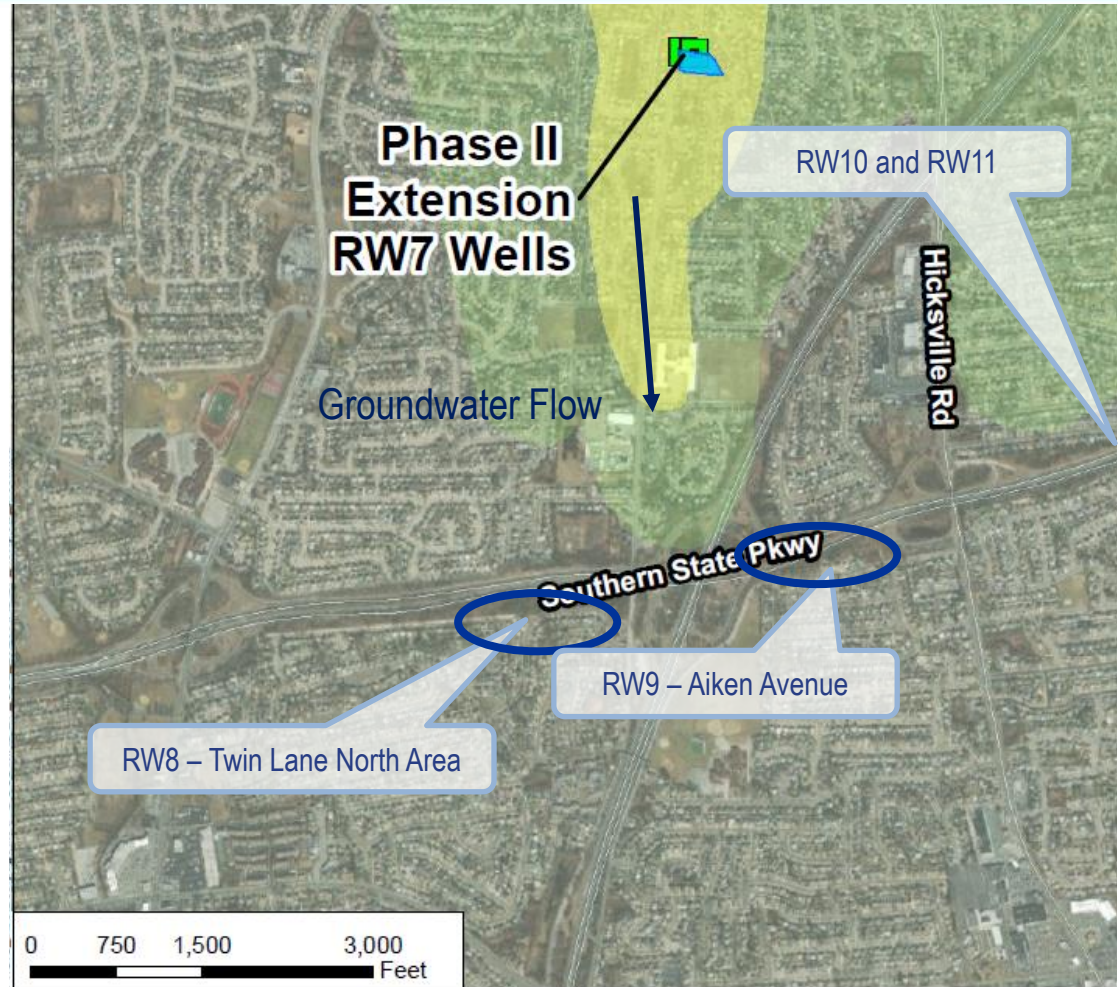
Phase III (RW8 to RW11) – Southern Plume Intercept
Treatment System Update

Presented by:
David Brayack, Project Manager
Tetra Tech
16 Nov 2022

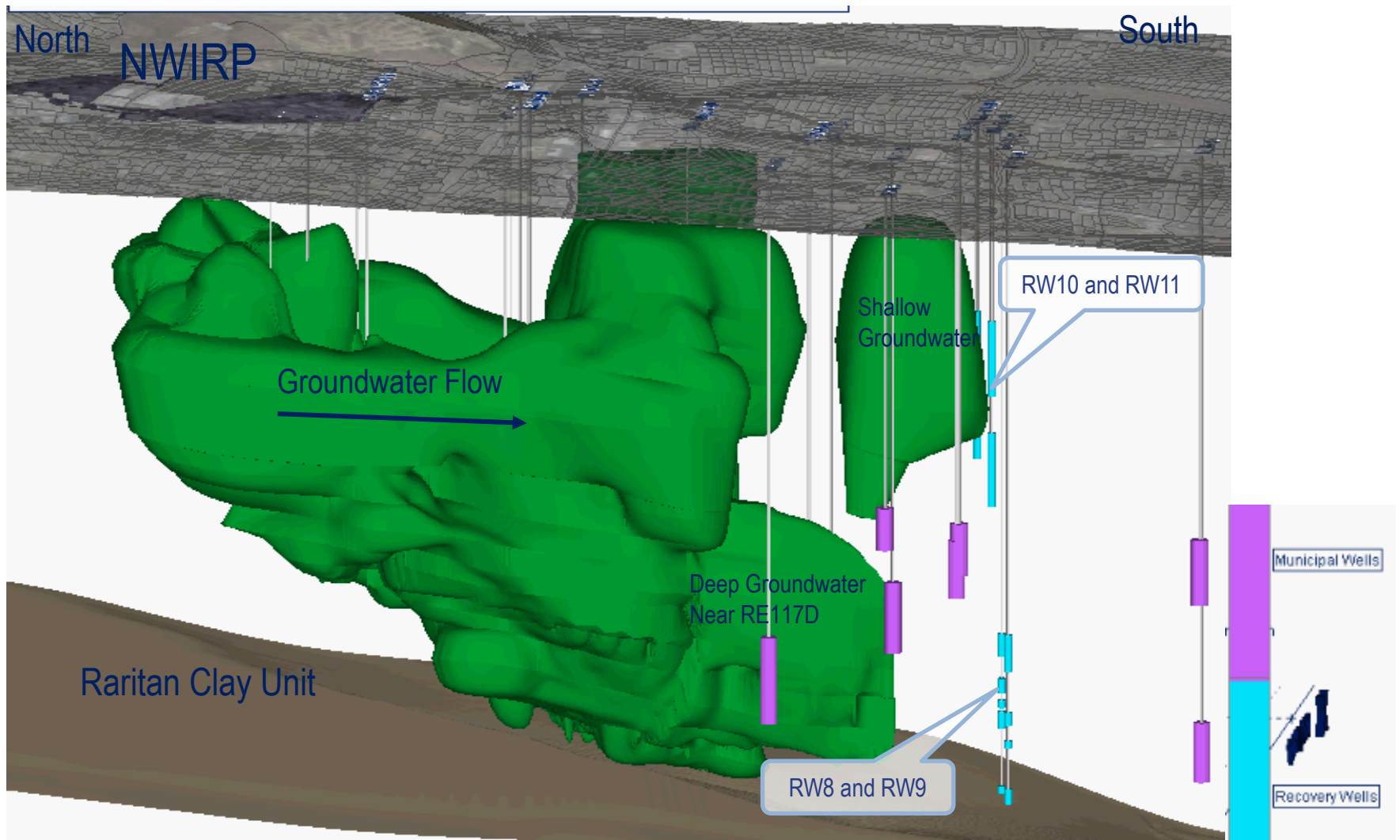
Phase III – Southern Plume Intercept Treatment System Update



- Location based on extensive monitoring of plume migration and space available
- Phase III-A - RW8 and RW9 target deep groundwater that is not captured by Recovery Well RW7 – Initial focus on deep groundwater
- Phase III-B – Potential for RW10 and/or RW11 wells to the east, with a possibility of a separate treatment plant – shallow groundwater



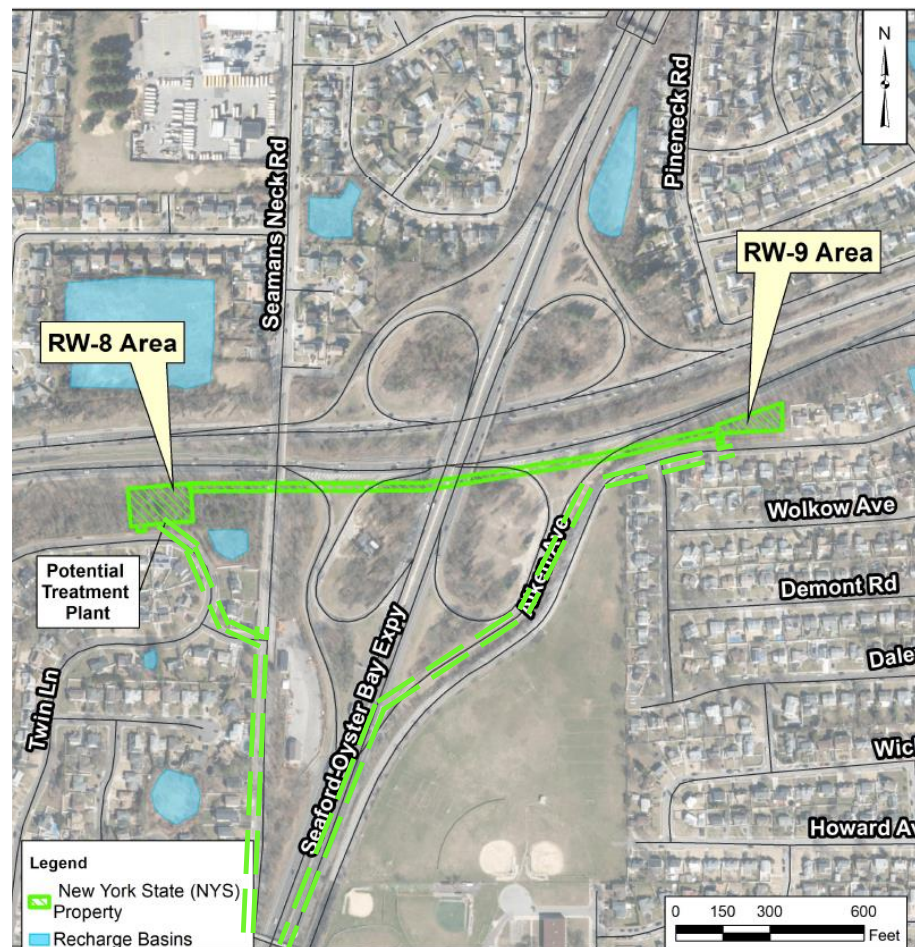
Phase III – Southern Plume Intercept Treatment System Update



Phase III – Southern Plume Intercept Treatment System Update



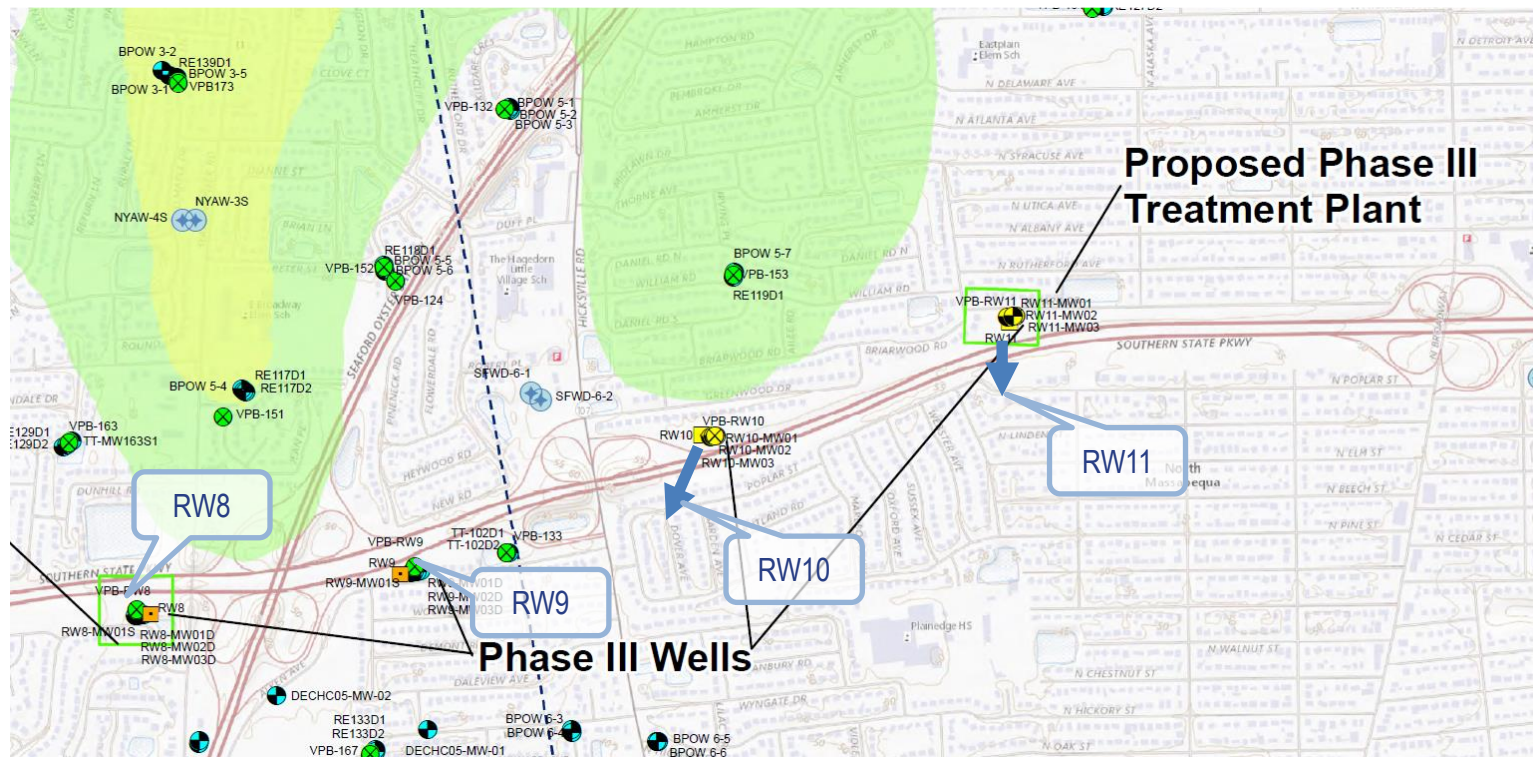
- Phase III drilling started in March 2021
- RW8 and RW9: (2) vertical profile borings, (8) monitoring wells, and (2) recovery wells are complete
- Computer modeling runs to evaluate capture are complete
- Recovery Well RW8 pumping test completed in October 2022
- Recovery Well RW9 pumping test to be completed in early December 2022



Phase III – Southern Plume Intercept Treatment System Update



- November 2022, preparing to drill VPB and monitoring wells for RW10 and RW11
- Due to access issues and plume location, RW10 and RW11 and associated VPBs and monitoring wells moved south of Southern State
- Due to plume location and limited access, RW10/RW11 moved south of Southern State Pkwy



Phase III – Southern Plume Intercept Treatment System, Recovery Well RW8 Area



Phase III – Southern Plume Intercept Treatment System, Recovery Well RW8 Pumping Test Equipment

- Pumping test conducted at 1,000 gallons per minute for three days (4.3 million gallons of water)
- Although water was clean, filtration and granular activated carbon (GAC) was used to treat water prior to discharge
- Data is used to check model calibration and if necessary, modify the model calibration in this area





Phase III – Southern Plume Intercept Treatment System Update – Path Forward

- Phase III-A (RW8 and RW9) Treatment System design: 2022 to 2023
 - Surveying and basin infiltration testing underway
- Treatment Plant construction and operation to start in 2024
- Phase III-B (RW10 and/or RW11) Treatment System approximately one year after Phase III-A System



Phase III – Southern Plume Intercept Treatment System Update – Path Forward

RAB Questions

NEXT: Phase II Remedial Action
Steve Matney, AGVIQ