



CAMP LEJEUNE

HOME OF
EXPEDITIONARY
FORCES IN READINESS



UXO-30 Proposed Plan Public Meeting

B-14 Expanded Investigation Area (EIA), Site UXO-30

Marine Corps Installations East – Marine Corps Base (MCB) Camp
Lejeune (MCIEAST – MCB CAMLEJ)

August 30, 2023



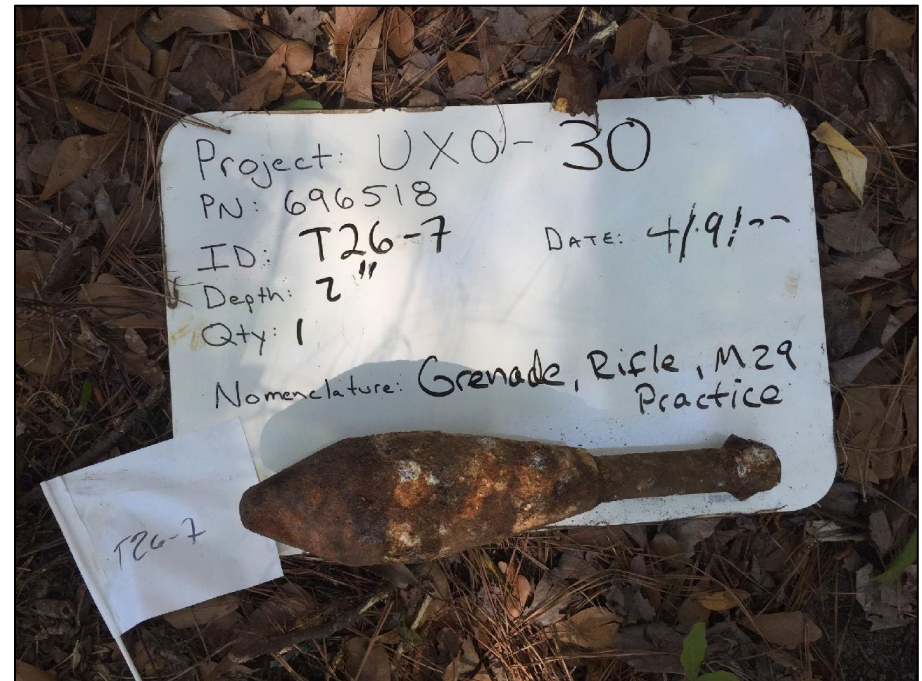
Presentation Overview

This presentation:

- Presents the Proposed Plan and the implemented remedial action for Site UXO-30 at Marine Corps Base (MCB) Camp Lejeune, North Carolina.
- Fulfills the CERCLA public participation requirements.

Next step:

- Finalize the plan with the North Carolina Department of Environmental Quality (NCDEQ) and U.S. Environmental Protection Agency (USEPA), following the public comment period (**August 23 to September 22, 2023**).



Location of B-14 EIA, Site UXO-30

- Located in the northwestern portion of MCAS New River
- Consists of portions of two historical small arms range (SAR) surface danger zones (yellow boundary) and the former B-14 Atomic, Biological, and Chemical (ABC) Warfare Area (blue boundary)
 - Based on sample data, no further action (NFA) is required for these areas
- Because of the NFA areas, the Site UXO-30 boundary has been revised to only include an approximately 18-acre area called the B-14 EIA (orange boundary)
 - Area may have been a former training area based on historical aerial photography and investigation findings



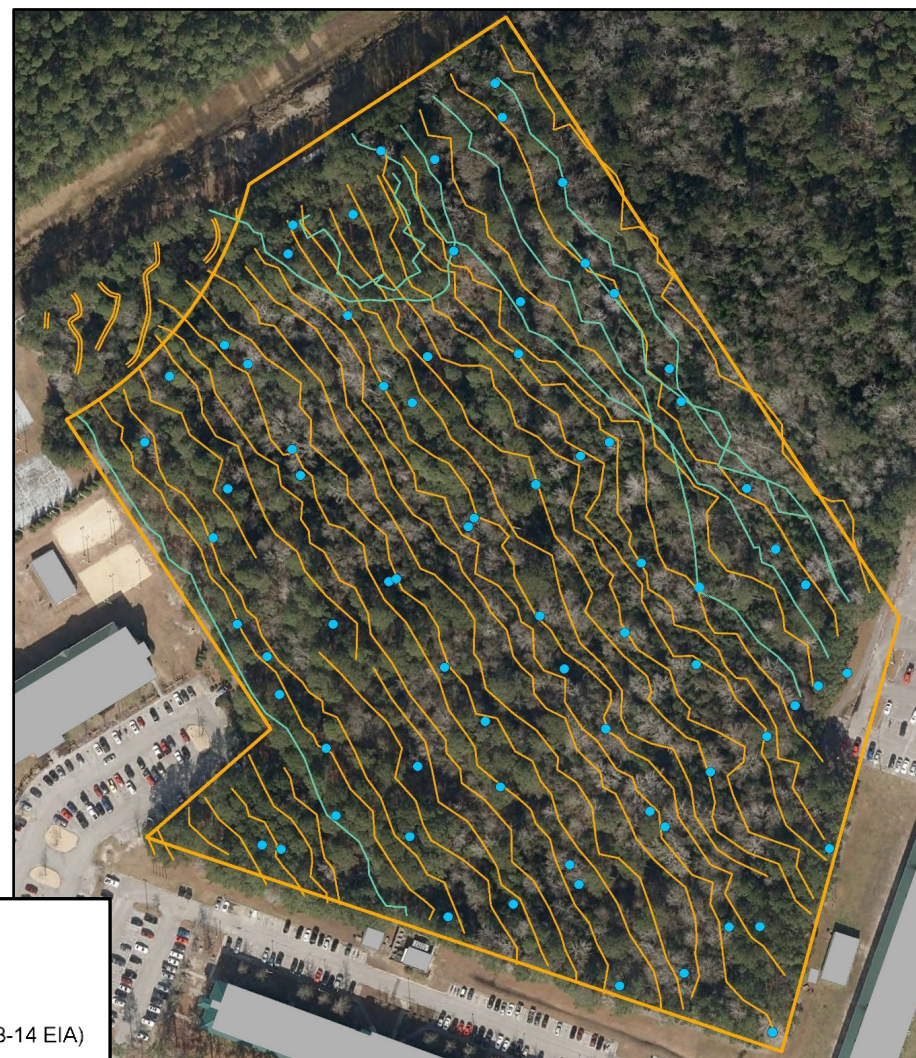
B-14 EIA, Site UXO-30



- Consists of ~18 acres of undeveloped forest, with the eastern portion of the site saturated and marshy
- Western portion of the site appears to have been used for training during the 1950s and 1960s
- No designated wetlands within the site
- Site topography is relatively level
- Adjacent areas to the west and south are developed
- A constructed drainage ditch is located adjacent to the northern boundary

2019 Preliminary Assessment/Site Inspection (PA/SI)

- Purpose: To evaluate
 - Potential presence and types of munitions and explosives of concern (MEC) and material potentially presenting an explosive hazard (MMPEH)
 - Potential sources of munitions constituents (MC)-related contamination at the site
 - To assess the potential hazards and risks to human health and the environment
- Conducted:
 - MEC/MPPEH surface clearances along vegetation-cleared transects;
 - Digital geophysical mapping (DGM) or mag and dig methods within approximately 2.2 acres of transects
 - Intrusive investigation of DGM anomalies
 - Surface soil sampling



Legend

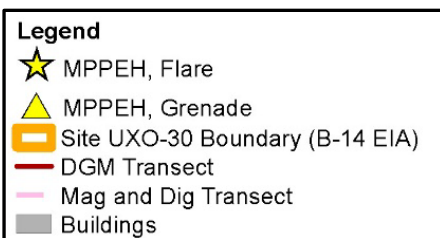
- Soil Sampling Location
- Mag and Dig Path
- DGM Path
- Site UXO-30 Boundary (B-14 EIA)
- Building

Investigation Locations

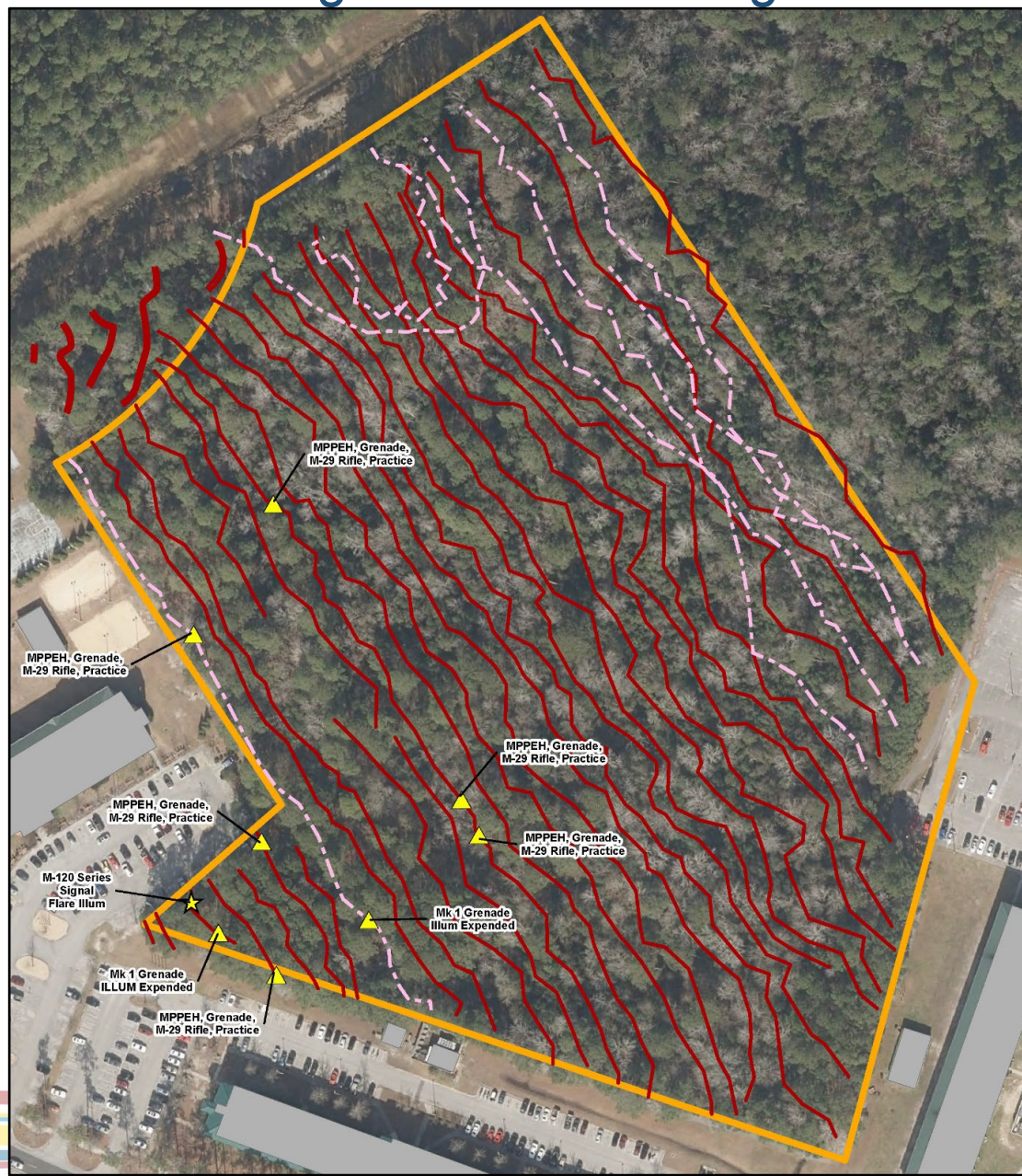
Site Investigation and Findings

2019 Preliminary Assessment/Site Inspection (PA/SI)

- Nine MPPEH items were found within the western portion of the site (six M-29 practice rifle grenades, two Mk 1 expended illumination grenades, and one M-120 illumination signal flare).
- No MEC or chemical warfare training materials were found.
- No unacceptable risks to human and ecological receptors from exposure to MC in surface soil.

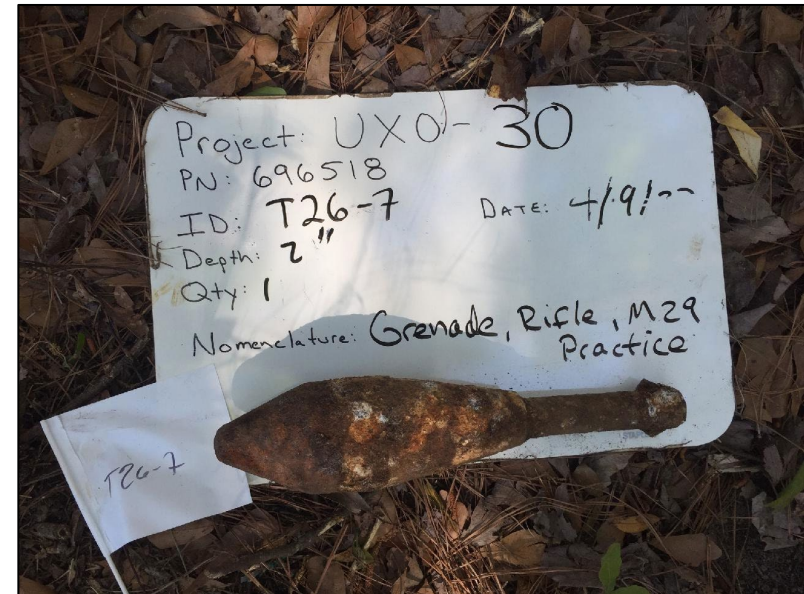


Investigation Locations and Finds



Remedial Investigation/Feasibility Study Report

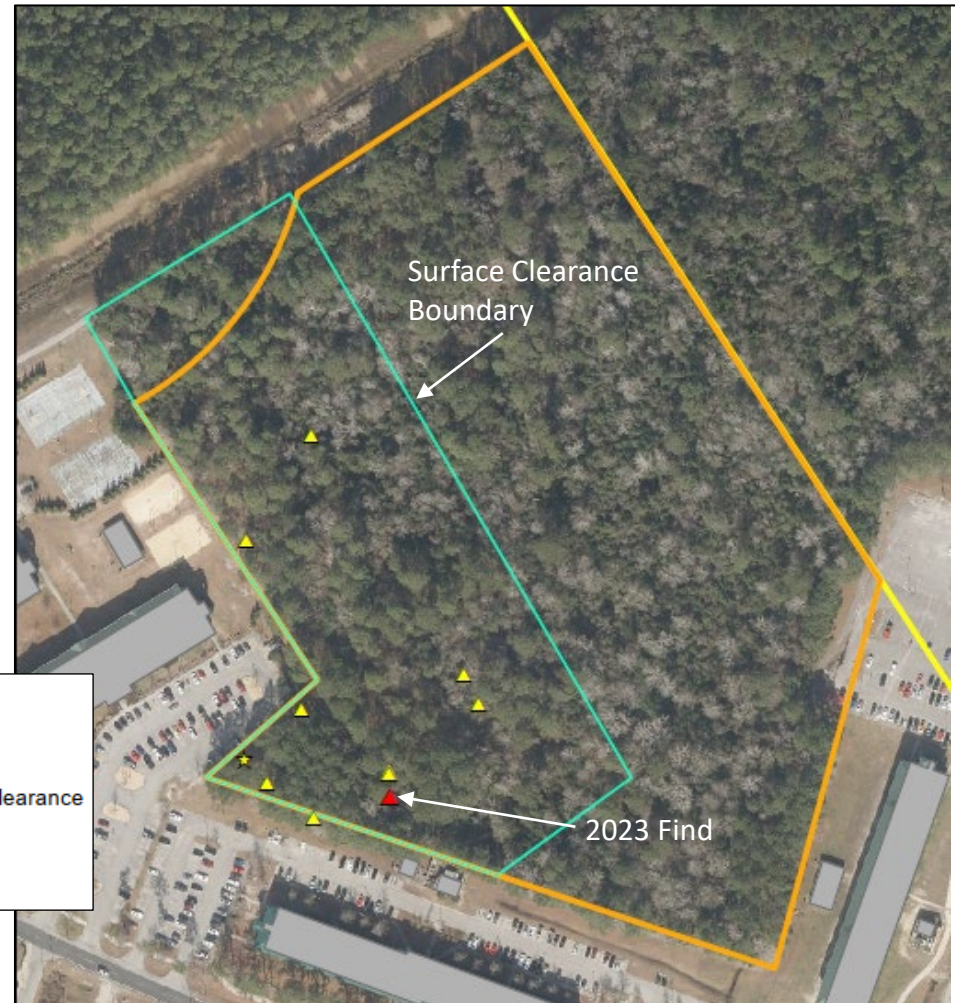
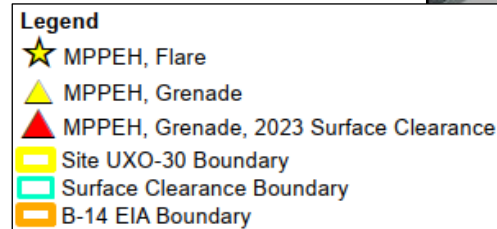
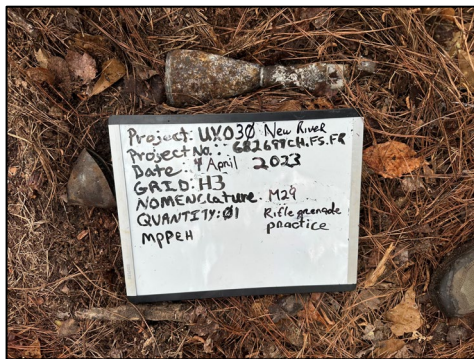
- Because the PA/SI resulted in a sufficient amount of site information to complete the RI, Site UXO-30 proceeded to the RI/FS.
- Developed a remedial action objective (RAO)
 - To reduce or prevent the potential for direct physical contact with MEC/MPPEH, which could present risk to human health due to explosive hazards.
- The FS evaluated the following remedial alternatives:
 - Alternative 1 – No Action (required for baseline comparison)
 - Alternative 2 – Land Use Controls (LUCs)
 - Alternative 3 – MEC/MPPEH Surface Clearance within the Western Portion of Site UXO-30 and LUCs
 - Alternative 4 - MEC/MPPEH Surface Clearance and LUCs – Sitewide
 - Alternative 5 - MEC/MPPEH Surface and Subsurface Removal - Sitewide



M29 Practice Rifle Grenade

Activities since the Feasibility Study – MEC/MPPEH Surface Clearance within the Western Portion of the Site

- Due to the proximity of the western area to barracks and recreational areas, a surface clearance was completed within a 7-acre area for safety reasons in May 2023
- Removed vegetation, except for large trees
- Conducted instrument-aided MEC/MPPEH surface clearance over 100% of the 7-acre area
- Found one M29 Practice Rifle Grenade (MPPEH) during the 2023 surface clearance



Comparison of Remedial Alternatives

Criteria	Alternative 1 No Action	Alternative 2 LUCs	Alternative 3 MEC/MPPEH Surface Clearance (Western Portion of the Site) and Sitewide LUCs	Alternative 4 MEC/MPPEH Surface Clearance and LUCs – Sitewide	Alternative 5 MEC/MPPEH Surface and Subsurface Removal – Sitewide
Threshold Criteria					
Protection of human health and the environment	○	●	●	●	●
Compliance with ARARs	Not Applicable	●	●	●	●
Primary Balancing Criteria					
Long-term effectiveness and permanence	Not Applicable	○	○	○	●
Reduction in toxicity, mobility, or volume through treatment	Not Applicable	○	○	○	●
Short-term effectiveness	Not Applicable	●	○	○	○
Implementability	Not Applicable	●	●	○	○
Total Estimated Costs	\$0	\$120,100	\$322,600	\$439,000	\$2,581,000
Modifying Criteria					
Regulatory Agency Acceptance	To be addressed through regulatory review of this PP.				
Community Acceptance	To be addressed through public comment.				

Notes: Relative Ranking: ● High (favorable) ○ Moderate ○ Low (unfavorable)

Rankings are provided as qualitative descriptions of the relative compliance of each alternative with the criteria.

The No Action alternative is used as a baseline for comparison purposes only. Because it does not meet the threshold criteria, it is not considered a viable alternative for this site.




Costs presented herein are for comparison purposes only and are not a guarantee of fixed cost for the specific alternative. The cost estimate is accurate to -30 percent/+50 percent. Costs are given in net present value.

Selected Remedy – Alternative 3 - MEC/MPPEH Surface Clearance within the Western Portion of the Site and Sitewide LUCs

- Addresses the explosive hazards posed by potential MEC/MPPEH remaining at Site UXO-30
- Directly reduces potential explosive hazards within the portion of the site that is considered the most accessible to Base personnel.
- Provides long-term LUCs to reduce or prevent potential future contact with MEC/MPPEH that may be present
- Does not achieve unlimited use and unrestricted exposure (UU/UE) for Site UXO-30; however, a UU/UE alternative is not considered applicable due to the estimated damage to the environment, potential disruption to Base operations, and high costs



Legend

-  Proposed Surface Clearance Boundary
-  Proposed LUC Boundary
-  Buildings

Community Participation

- Public input is a key element in the decision-making process.
- The public comment period will be from **August 23 to September 22, 2023**.
- Comments received from residents and other interested parties will be summarized and a Responsiveness Summary will be prepared.
- The Proposed Plan can be reviewed at [LINK GOES HERE](#)
- The technical reports supporting the preferred alternative for Site UXO-30 are available for public review in the online Administrative Record. Search the Administrative Record tab for “Site UXO-30”.
- A hard copy of the Proposed Plan is available for review at:

Onslow County Public Library
58 Doris Avenue East
Jacksonville, NC 28540
(910) 455-7350

Questions?

