

N60191\_001836  
NAS OCEANA, VA  
SSIC 5000-33a

**FINAL COMMUNITY INVOLVEMENT PLAN NALF FENTRESS FIELD NAS  
OCEANA VA**  
08/01/2020  
CH2M HILL

Approved for public release: distribution unlimited.



# Community Involvement Plan

## Naval Auxiliary Landing Field Fentress Chesapeake, Virginia

August 2020

Final



# Community Involvement Plan Organization

- 1. Introduction.....1
- 2. The Community .....2
- 3. Community Issues, Concerns, and Preferences.....5
- 4. Community Involvement Action Plan .....7
- 5. The Installation ..... 10
- 6. References ..... 13
- Appendix A      Example Community Questionnaire
- Appendix B      Key Community Contacts
- Appendix C      Example Public Notice and Fact Sheet



Pocaty River culvert facing southwest

# 1. Introduction

This Community Involvement Plan (**CIP**) presents the objectives and approach for implementing a community involvement program in support of work being performed under the United States Department of the Navy Environmental Restoration Program (**ERP**) at Naval Auxiliary Landing Field (**NALF**) Fentress, Chesapeake, Virginia.

This CIP is designed to support effective two-way communication between NALF Fentress and local community members for the ERP. Effective communication and timely information exchange are essential for maintaining community understanding and support for NALF Fentress' mission and for implementing a successful ERP. The outreach methods described were developed based on the results of community interviews conducted in November 2018. An example of the community questionnaire is included in **Appendix A**.



*White-tailed deer*

*USDA/Scott Bauer*

## 1.1. Environmental Restoration Program

The Naval Energy and Environmental Support Activity initiated environmental investigations at NALF Fentress in 1984 during an Initial Assessment Study completed to identify and assess sites posing a potential threat to human health or the environment. In 1988, the United States Environmental Protection Agency (**USEPA**) initiated environmental assessment of NALF Fentress under the Resource Conservation and Recovery Act by completing a Resource Conservation and Recovery Act Facility Assessment. This assessment identified solid waste management units (**SWMUs**) that had the potential to pose risks to human health and/or the environment. While NALF Fentress is not on the USEPA's National Priorities List,<sup>1</sup> it is regulated in accordance with the Comprehensive Environmental Response, Compensation, and Liability Act (**CERCLA**) process, with oversight from the Virginia Department of Environmental Quality (**VDEQ**).

The Navy's ERP addresses past contamination and consists of two programs:

- The Installation Restoration Program (**IRP**) addresses releases of hazardous substances, pollutants, or contaminants that may pose risks to human health or the environment.
- The Munitions Response Program (**MRP**) addresses environmental health and safety hazards from munitions and explosives of concern.

## 1.2. Community Involvement

Federal and state laws provide opportunities for community involvement throughout the environmental restoration process. Naval Facilities Engineering Command Mid-Atlantic and the Naval Air Station (**NAS**) Oceana Public Affairs Office work in partnership with VDEQ to meet these requirements and ensure implementation of the community involvement activities outlined in this CIP.

To date, no CIPs have been prepared for NALF Fentress; however, community outreach efforts to support the ERP are ongoing, including those related to monitoring of off-installation drinking water for per- and polyfluoroalkyl substances (**PFAS**).

### Acronym Use

To make this document more readable, acronym use has been limited. Acronyms that are used repeatedly appear in bold the first time they are used and are listed below:

<b>CERCLA</b>	Comprehensive Environmental Response, Compensation, and Liability Act
<b>CIP</b>	Community Involvement Plan
<b>EE/CA</b>	Engineering Evaluation and Cost Analysis
<b>ERP</b>	Environmental Restoration Program
<b>IRP</b>	Installation Restoration Program
<b>MRP</b>	Munitions Response Program
<b>NALF</b>	Naval Auxiliary Landing Field
<b>NAS</b>	Naval Air Station
<b>PFAS</b>	per- and polyfluoroalkyl substances
<b>POC</b>	point of contact
<b>SWMU</b>	Solid Waste Management Unit
<b>USEPA</b>	United States Environmental Protection Agency
<b>UXO</b>	unexploded ordnance
<b>VDEQ</b>	Virginia Department of Environmental Quality

<sup>1</sup> The National Priorities List is a list of hazardous waste sites the USEPA has prioritized for long-term remedial investigation/action.



## 2. The Community

This section describes NALF Fentress' setting within the local community.

### 2.1. Community Profile

#### 2.1.1. Location

NALF Fentress is located in the northeastern portion of the City of Chesapeake near the border of the City of Virginia Beach and encompasses approximately 2,500 acres. **Figure 1** illustrates the general location of NALF Fentress.

#### 2.1.2. Surrounding Community

The City of Chesapeake is located in the southeastern portion of Virginia, in the southern portion of the Hampton Roads area, and is surrounded by Virginia Beach to the east, by Portsmouth and Norfolk to the north, by Suffolk to the west, and by North Carolina to the south. A relatively large portion of the Great Dismal Swamp is located in southwestern Chesapeake. A majority of the land surrounding NALF Fentress is agricultural or open space, with parks and wildlife refuges located primarily to the west and northwest of the installation. Residential areas, agricultural areas, and parks and wildlife refuges are shown on **Figure 2**.

#### 2.1.3. Installation Land Use

NALF Fentress is one of three installations falling under the command of NAS Oceana. Established in 1943, the installation encompasses just over 2,500 acres, and the United States owns an additional 8,700 acres in restrictive easements around NALF Fentress. The installation is primarily used by squadrons stationed at NAS Oceana or Naval Station Norfolk Chambers Field for Field Carrier Landing Practice and helicopter training operations. No storage or maintenance of aircraft is performed at NALF Fentress. Land use surrounding NALF Fentress is primarily residential and agricultural.

#### 2.1.4. Medical Facilities

Nearby medical facilities include Sentara Edinburgh, Sentara Princess Anne Hospital, and Chesapeake Regional Medical Center, as well as local urgent care facilities and doctors' offices in Chesapeake, Virginia and Virginia Beach, Virginia. The locations of major medical facilities are shown on **Figure 2**.



*Location of a monitoring well at NALF Fentress Site 17*

**FIGURE 1  
NALF FENTRESS SITE MAP**



### 2.1.5. Schools

In the 2018–2019 school year, the Chesapeake City Public School System, which includes seven high schools in the city, served a population of approximately 40,898 students and the Virginia Beach Public School System, which includes 12 high schools in the city, served approximately 68,624 students (VDE, 2019). The Chesapeake campuses of Centura College-Chesapeake, DeVry University, Regent University, Tidewater Community College, Saint Leo University and Strayer University are located in the City of Chesapeake, shown on **Figure 2**. Other campuses located in the City of Virginia Beach, including Tidewater Community College, the East Coast Polytechnic Institute, Stratford University and the Virginia Beach Higher Education Center, are also shown on **Figure 2**.

### 2.1.6. Drinking Water Sources

Drinking water at NALF Fentress, supplied by two on-installation production wells, is pumped through a water treatment system (also located on-installation), owned and operated by the Navy Public Works Center. The on-installation production wells are screened in the Yorktown aquifer. Drinking water to the surrounding area is supplied by groundwater wells located on private properties. The depth of private drinking water wells varies, but the wells are likely screened in the Yorktown aquifer. As outlined in an Action Memorandum (CH2M, 2018), the Navy plans to provide a City of Chesapeake water line main down Mount Pleasant Road, north of NALF Fentress. This water line provides an alternate source of drinking water to the properties in the vicinity of the installation being affected by two of the most common PFAS that have been found in a small number of drinking water wells above the USEPA lifetime health advisory level.

### 2.1.7. Population

The overall population of Chesapeake was 222,209 during the 2010 U.S. Census and increased to an estimated 242,634 in 2018 (U.S. Census Bureau, 2019). **Table 1** presents the population data for the City of Chesapeake compared with the City of Virginia Beach and the Commonwealth of Virginia.

### 2.1.8. Employment and Income

The installations falling under the command of NAS Oceana contribute to the surrounding area as one of the largest employers.

The unemployment rates in the City of Chesapeake, the City of Virginia Beach, and the Commonwealth of Virginia are approximately the same. **Table 2** presents the unemployment rate for Chesapeake compared to the City of Virginia Beach and the Commonwealth of Virginia from 2010 to 2019 (U.S. Bureau of Labor, 2019).

TABLE 1  
U.S. CENSUS POPULATION DATA

	Population 2010	Population 2018 (estimated)	Population Change 2010–2018
Chesapeake	222,209	242,634	9.2%
Virginia Beach	437,994	450,189	2.8%
Virginia	8,001,024	8,470,020	5.9%

Source: U.S. Census Bureau, 2019.

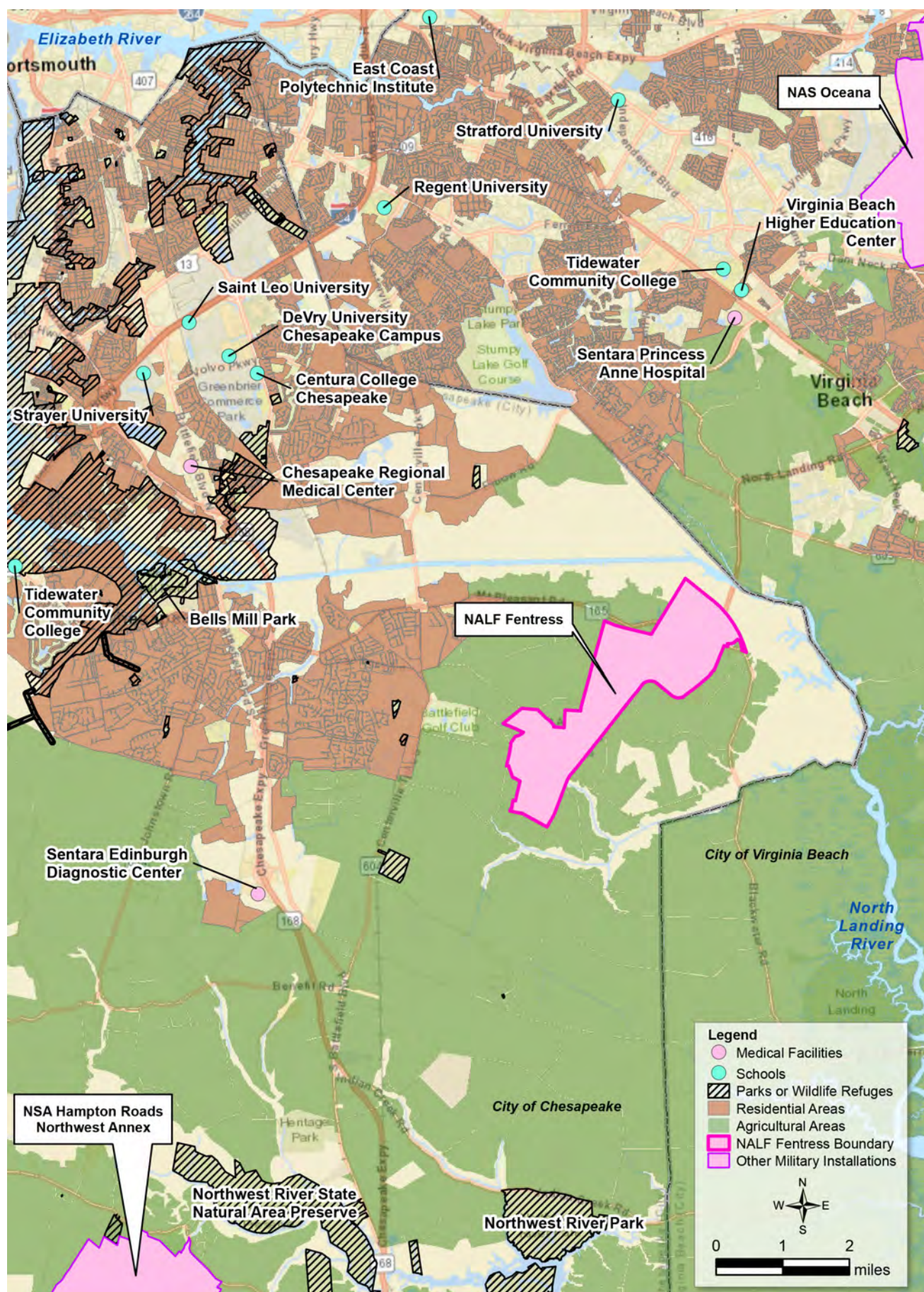
TABLE 2  
UNEMPLOYMENT RATES

	Unemployment Rate January 2010	Unemployment Rate January 2019	Percent Change 2010–2019
Chesapeake	7.7%	3.3%	-4.4%
Virginia Beach	7.1%	3.1%	-4.0%
Virginia	7.9%	3.2%	-4.7%

Note: Data is not seasonally adjusted.  
Source: U.S. Bureau of Labor, 2019.



FIGURE 2  
NALF FENTRESS LOCATION





### 3. Community Issues, Concerns, and Preferences

This section describes the history of community involvement activities at NALF Fentress and previous community issues, concerns, and preferences.

#### 3.1. History of Community Involvement at NALF Fentress

While this is the first ERP CIP prepared for NALF Fentress, there has been community outreach related to ongoing monitoring of drinking water for PFAS, MRP investigations, and aviation mission-related studies, including public meetings, fact sheets, and public notices.

#### 3.2. Previous Community Issues, Concerns, and Preferences

The community has previously expressed concerns regarding groundwater contamination in the vicinity of NALF Fentress due to the use of PFAS-containing products, such as aqueous film forming foam. The community provided comments during public meetings and the public comment period for the recently finalized Engineering Evaluation and Cost Analysis (EE/CA) (CH2M, 2018).

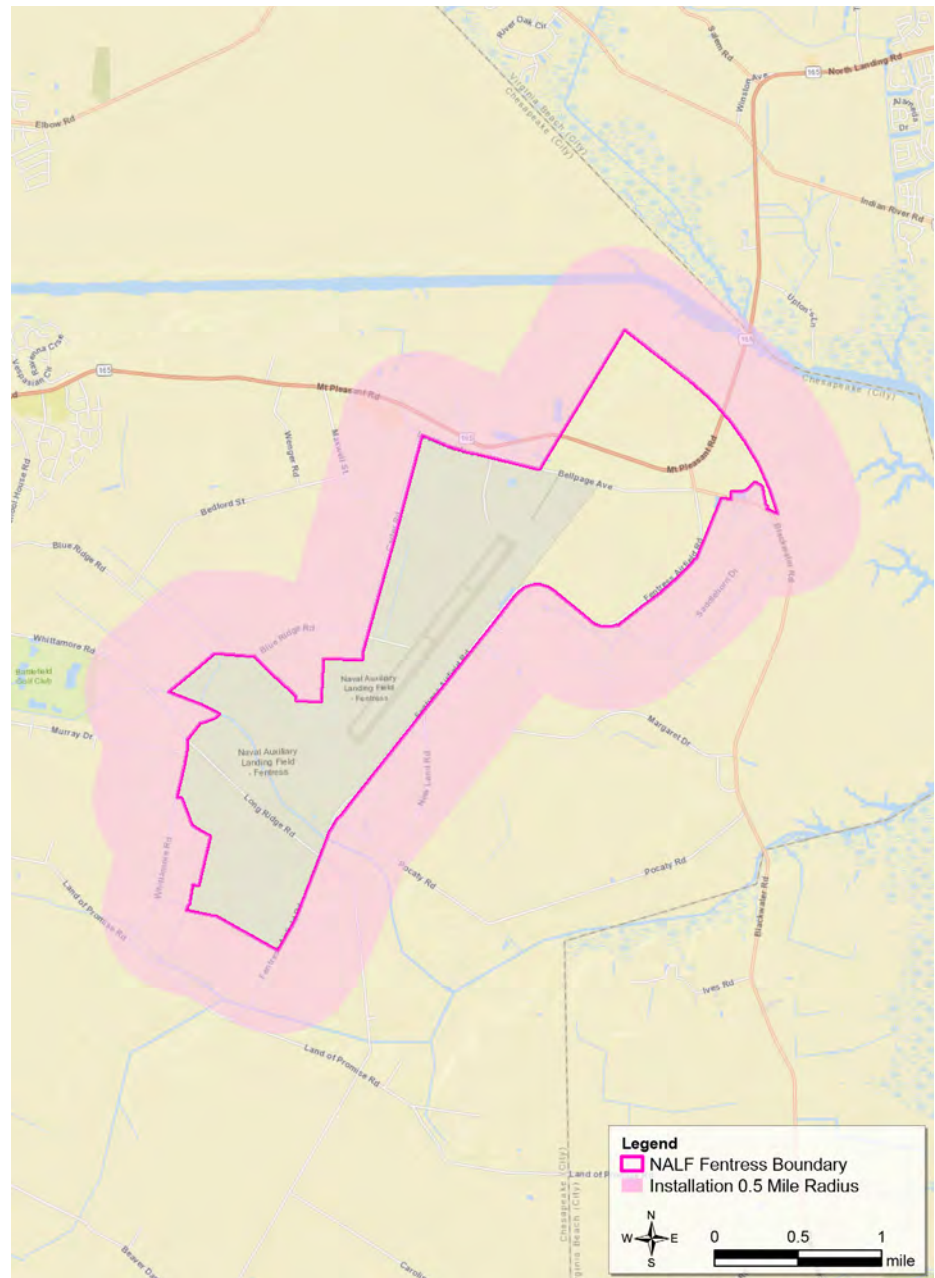
#### 3.3. Process for Gathering Updated Community Input

To support this CIP, the Navy focused the information-gathering process on NALF Fentress' neighboring communities (using a 0.5-mile radius from the installation). The community involvement questionnaires were sent to 350 randomly selected addresses within the 0.5-mile radius (Figure 3), as well as the key community members included in Appendix B. The questionnaires reached residents, local business owners, retired military, public/elected officials, a concerned citizen, and a former Morale, Welfare, and Recreation employee. The results of the questionnaires provided valuable data. Recommendations are discussed in the following sections.

#### 3.4. Results of Current Community Questionnaires

Although the community involvement questionnaire was not designed to provide statistical analysis of the information received, the responses provided valuable data to construct final CIP recommendations specifically related to the community's general awareness, level of concern, and information needs.

FIGURE 3  
NALF FENTRESS 0.5-MILE RADIUS



GPS equipment set up at Site 14, NALF Fentress

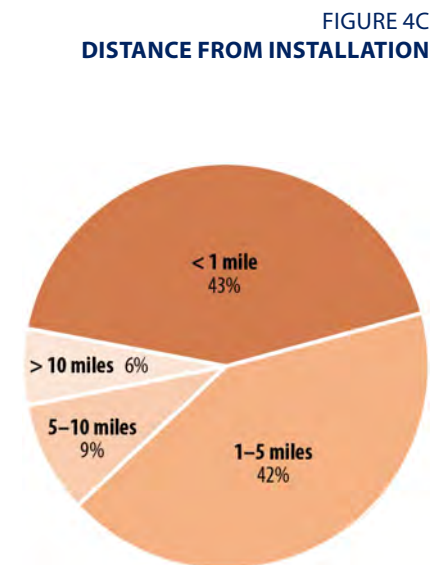
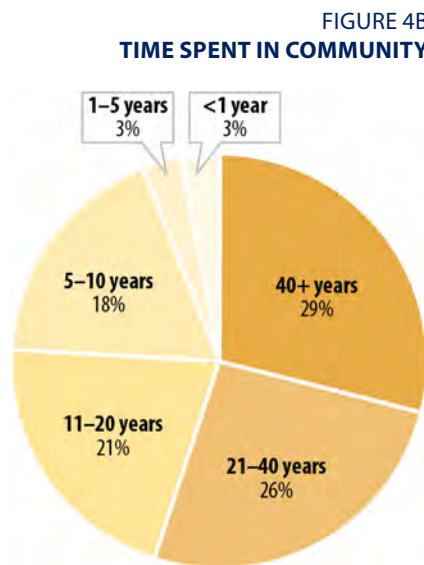
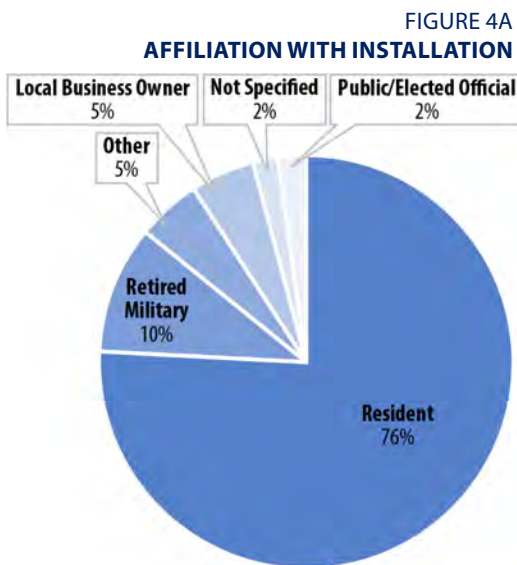


Thirty-four completed questionnaires provided the following information:

- The majority of the respondents were local residents who lived within one mile of NALF Fentress (**Figures 4a–c**).
- The majority of the respondents were aware of the ongoing efforts to investigate and remediate past contamination at Navy facilities, but approximately half of respondents were not aware of the ERP at NALF Fentress.
- Nearly all of the respondents were unaware of the location of the information repository for NALF Fentress (formerly located at Meyera E. Oberndorf Library in Virginia Beach; the new location is discussed in **Section 4.2.6**) and did not believe it was a convenient location.
- The majority also did not know the Administrative Record could be accessed from the NALF Fentress/NAS Oceana public website. The Administrative Record is a comprehensive record of all documents and resources used to make decisions about the IRP cleanup and is discussed in **Section 4.2.6**.

The following Issues and concerns related to the ERP were identified in the questionnaire responses:

- A majority of the respondents were concerned about environmental issues related to activities at NALF Fentress, citing reasons such as water contamination and jet noise (**Figure 5**).
- The majority of the respondents believe the environmental releases at NALF Fentress do affect the surrounding community, with the environment and health of the community being the most affected (**Figure 6**).

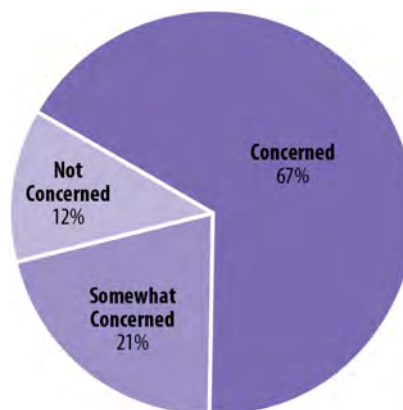


### 3.5. Recommendations and Communication Preferences

Respondents recommended regular distribution of information, especially with regard to the continued off-installation private drinking water testing.

The majority of the respondents indicated that they prefer to receive updates regarding environmental restoration activities at NALF Fentress monthly or quarterly.

**FIGURE 5**  
**CONCERNS FOR ENVIRONMENTAL ISSUES AT NALF FENTRESS**



**FIGURE 6**  
**HOW ENVIRONMENTAL RELEASES HAVE AFFECTED SURROUNDING COMMUNITY**



## 4. Community Involvement Action Plan

Based on the community's issues, concerns, and preferences described in the previous section, this section describes the specific techniques and activities the installation will use to refine the ongoing community involvement associated with the ERP.

### 4.1. Goals and Objectives

The Community Involvement Action Plan for NALF Fentress is designed to encourage public involvement in the ERP by providing information to the public and media regularly. The action plan is also designed to be flexible so it can be revised as community information needs evolve and change.

Community outreach activities are based on community suggestions and community relations requirements outlined in the *Superfund Community Involvement Handbook* (USEPA, 2002). The activities outlined here will be conducted, and other activities may be included, at the discretion of the Commanding Officer at NAS Oceana.

The goals and objectives for this CIP are as follows:

- To provide information concerning ongoing environmental restoration actions, major findings, and decisions in a timely manner utilizing the established robust communication channels between NALF Fentress, the community, and municipal and Commonwealth leadership.
- To provide a means by which public concerns and information needs can be monitored and addressed throughout the environmental restoration process.
- To provide a mechanism for incorporating public comments into the process in a timely and meaningful way.
- To identify additional individuals and groups that may become interested in one or more sites as environmental work at the installation progresses.



Naval Fire Department conducting a demonstration for local high school students



## 4.2. Opportunities for Public Involvement

Following is a description of how community involvement activities will be implemented at various steps in the ERP process at NALF Fentress.

### 4.2.1. Publish Public Notices

Newspapers are an important medium for providing information to communities. Public notices will be issued to provide notice of meetings, the availability of a technical document, or other pertinent information. Public notices are part of the CERCLA process and generated to announce the availability of some specific technical documents, for example, Proposed Plans. Public notices are published in *The Virginian-Pilot*, *The Shopper*, and the *Chesapeake Clipper*, and an example is provided in **Appendix C**.

### 4.2.2. Hold Public Meetings

Public meetings are intended to inform the community about ongoing site activities and to discuss and receive feedback from the public on proposed courses of action. Public meetings will be held as required for certain site activities. In addition, informal meetings may be used to keep community groups and citizens informed of site activities.

Additional public meetings will be held as needed, such as for the start of a major investigation or the implementation of a remedial action.

### 4.2.3. Provide Comment Periods

Public comment periods are held at various points in the environmental cleanup process and are often accompanied by a public meeting. These points include the completion of a Proposed Plan or an EE/CA and Action Memorandum.

### 4.2.4. Prepare Responsiveness Summaries

A Responsiveness Summary is prepared following a public comment period to provide decision makers with documentation of the comments received and the Navy's responses to substantive comments. Responsiveness Summaries are included in the Record of Decision (or Action Memorandum) and placed in the information repository and Administrative Record file. NALF Fentress will continue to prepare a Responsiveness Summary or minutes summarizing the comments received during a public comment period, as well as responses to those comments.

### 4.2.5. Prepare and Distribute Fact Sheets

Fact sheets are produced to inform the public of the status and significant findings of specific cleanup activities. Fact sheets provide detailed information about site history and planned technical activities and provide updates on schedules and next steps. Fact sheets are available in the Administrative Record and located in the designated Information Repository. While respondents requested monthly or quarterly updates, fact sheets will be sent out semi-annually to coincide with off-installation drinking water sampling events. An example of a fact sheet is provided in **Appendix D**.

### 4.2.6. Maintain the Information Repository and Administrative Record File

Documents in the Information Repository may include:

- CIP
- Site Management Plan
- Remedial Investigation Reports
- EE/CAs
- Feasibility Study Reports
- Proposed Plans
- Records of Decision
- News releases, community notices, public meeting minutes, and fact sheets

The Navy previously maintained an information repository at Meyera E. Oberndorf Central Library in Virginia Beach; however, based on community input, the Navy has moved the NALF Fentress information repository file to:

**Chesapeake Central Library**  
**298 Cedar Road**  
**Chesapeake, Virginia 23322**  
**757-410-7100**



*Public meeting for the ongoing  
 NALF Fentress PFAS Investigation*

Documents in the repository are available for public inspection during normal library hours. The repository is accessible to individuals with mobility constraints, has copier facilities, and internet access. Hours of operation are as follows:

<b>Monday–Thursday</b>	<b>10:00 a.m. to 8:00 p.m.</b>
<b>Friday</b>	<b>10:00 a.m. to 6:00 p.m.</b>
<b>Saturday</b>	<b>10:00 a.m. to 5:00 p.m.</b>
<b>Sunday</b>	<b>1:00 p.m. to 5:00 p.m.</b>

Navy officials will announce additions to the Administrative Record when public notices or press releases are issued. The notification will include the title of the item and the date it was placed in the Administrative Record. The Administrative Record is available in the Information Repository and online at:

[https://www.navfac.navy.mil/products\\_and\\_services/ev/products\\_and\\_services/env\\_restoration/administrative\\_records.html?p\\_instln\\_id=OCEANA\\_NAS](https://www.navfac.navy.mil/products_and_services/ev/products_and_services/env_restoration/administrative_records.html?p_instln_id=OCEANA_NAS)

4.2.7. Publicize Points of Contact

The point of contact (POC) for the ERP is responsible for distributing information about the environmental restoration work at NALF Fentress. The POC for information about the ERP is the NALF Fentress Remedial Project Manager. Key points of contact and their roles are included in Table 3.

4.2.8. Update the Community Involvement Plan

USEPA community involvement guidance states that CIPs are required to be updated every five years (USEPA, 2019). This CIP will be updated again in 2024 or earlier if necessary.

4.2.9. Provide Up-to-Date Information on the Internet

The objective of providing up-to-date information on the internet is to enable community members to access accurate, timely, and comprehensive information on ERP activities at NALF Fentress on their own time and at minimal expense.

The Navy will continue to maintain a public website for the ERP at NALF Fentress. The website is currently maintained at the following location:

[https://www.navfac.navy.mil/products\\_and\\_services/ev/products\\_and\\_services/env\\_restoration/installation\\_map/navfac\\_atlantic/midlant/oceana.html](https://www.navfac.navy.mil/products_and_services/ev/products_and_services/env_restoration/installation_map/navfac_atlantic/midlant/oceana.html)

All public notices and fact sheets will include the address of the ERP website. The website will include a link to the Administrative Record and provide web links to additional environmental resources. Documents that are available for public comment, such as EE/CAs and Proposed Plans, will be made available as .pdf files for download through the website and will clearly identify information about the public comment period. The website also includes a description of each active environmental restoration site. The website will be updated semi-annually at a minimum. However, interim updates will occur when there is a significant action (e.g., Proposed Plans and EE/CAs are available for public review, and POCs change).

4.2.10. Maintain a Contact List of Interested Parties

The objective is to facilitate the distribution of information about the ERP at NALF Fentress to stakeholders.

The Navy will continue to maintain a contact list to inform stakeholders of ERP activities at NALF Fentress. Contacts included on the list will receive notification of public meetings and changes in the designated Navy POCs by regular mail and email.

The Navy will update the contact list as requests for inclusion on the list are received. Community members can request to be added to the contact list by contacting the Public Affairs Officer or Navy Remedial Project Manager identified in Table 3.

TABLE 3  
KEY NAVY POINTS OF CONTACT

Primary contact for:	Current Contact Information
<ul style="list-style-type: none"><li>Questions about NALF Fentress in general</li></ul>	Commander, Navy Region Mid-Atlantic Public Affairs Officer Elizabeth Baker (757) 322-2853 <a href="mailto:elizabeth.m.baker1@navy.mil">elizabeth.m.baker1@navy.mil</a>
<ul style="list-style-type: none"><li>Questions and concerns about NALF Fentress' ERP</li><li>Requests for documents related to the NALF Fentress ERP or to provide public comment during a public comment period</li><li>Questions about accessing the Administrative Record File</li></ul>	NALF Fentress Remedial Project Manager Jillian Wheeler (757) 341-0485 <a href="mailto:jillian.wheeler@navy.mil">jillian.wheeler@navy.mil</a>



## 5. The Installation

This section describes NALF Fentress' history and mission, its environmental history, the regulatory framework and steps for environmental restoration, and summarizes the current site status.

### 5.1. History and Mission

#### 5.1.1. Installation History

NALF Fentress was established in 1943 as an outlying field for Norfolk's Chambers Field and was placed under the operational command and control of NAS Oceana in 1951. Since 1951, NALF Fentress has been the primary training field for landing practice by the operational units that are based at NAS Oceana and Naval Station Norfolk Chambers Field. World War II (WWII) was the height of operations at NALF Fentress. The installation is now primarily used for touch-and-go landing training operations. No storage or maintenance of aircraft is performed at NALF Fentress.

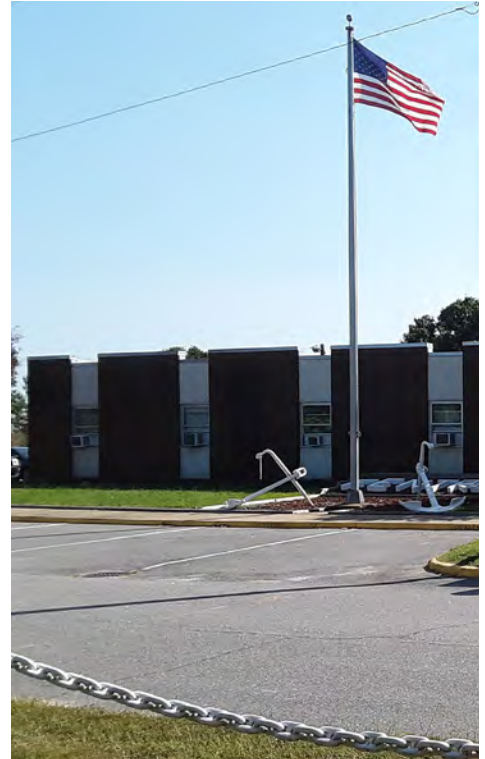
#### 5.1.2. Mission

NALF Fentress is an auxiliary field to NAS Oceana. The primary mission of NAS Oceana is to provide the personnel, operations, maintenance, and training facilities to ensure that strike-fighter squadrons assigned to east-coast Carrier Air Wings are ready for deployment.

### 5.2. Environmental History

When NALF Fentress was established in 1943, operations required the use, handling, storage, and disposal of hazardous materials and petroleum products, including paints, solvents, degreasers, waste oil, fuels, pesticides/herbicides, and household products. Typical activities at NALF Fentress included maintenance of aircraft, vehicles, and engines; non-aircraft fuel and oil storage and distribution; weapons cleaning and repair; facilities maintenance; munitions operations; and sewage treatment and landfilling. After WWII, operations at NALF Fentress were drastically decreased. Current activities include fuel and oil storage and distribution; facilities maintenance; and sewage treatment to support touch-and-go landing training operations. In the past, few (if any) regulations guided these activities, and little was known about the long-term effects of hazardous materials on human health and the environment. Prior to the 1980s, hazardous materials came into contact with the environment through accidental spills, leaks, and conventional waste disposal practices. These occurrences may have resulted in conditions that do not meet today's stricter and more comprehensive environmental standards.

Currently, all hazardous materials and wastes generated at NALF Fentress are managed in accordance with state and federal regulations and are disposed of or recycled offsite at licensed waste disposal facilities. Past releases to the environment are being addressed by the Navy's ERP.



*Building 100 at NALF Fentress*



*NALF Fentress Fire Station*



*Jet takeoff at NALF Fentress*

The Navy's focus on cleanup of historical contaminant releases and preventing future releases enables the Navy to reduce any adverse effects or potential threat to the public health, public welfare, or the environment.

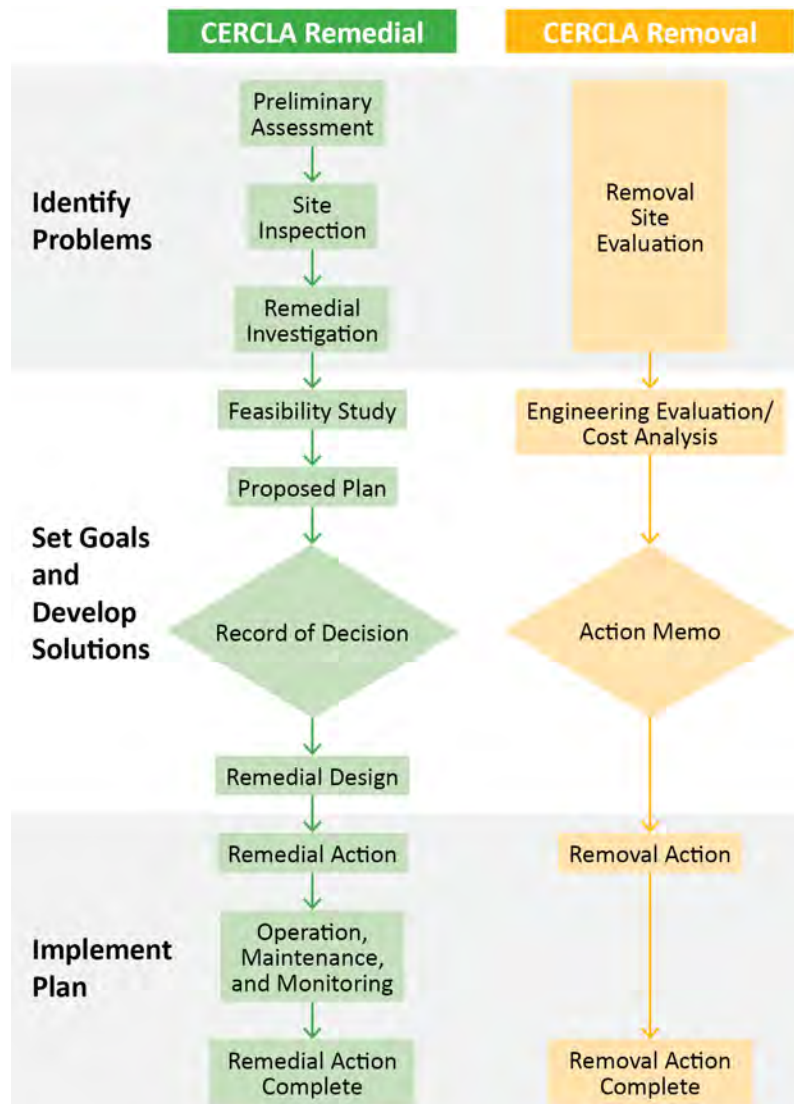
### 5.3. Regulatory Framework

Initial activities in support of the IRP were combined for NAS Oceana and NALF Fentress. The Navy identified possible environmental contamination caused by operations at the installation, prior to state and federal environmental regulatory involvement. The Initial Assessment Study (Rogers, Golden & Harpern, 1984) and the Final Round 1 Verification Step (CH2M, 1986) for NAS Oceana also included NALF Fentress sites. Since then, IRP activities have been separated for NAS Oceana and NALF Fentress. These reports are available for viewing on the public website. All investigations and documents in the NALF Fentress ERP have been completed in accordance with the CERCLA site management process (**Figure 7**).



NAVFAC Mid-Atlantic contractors collecting soil samples at Site 14

FIGURE 7  
REGULATORY FRAMEWORK





## 5.4. Site Status

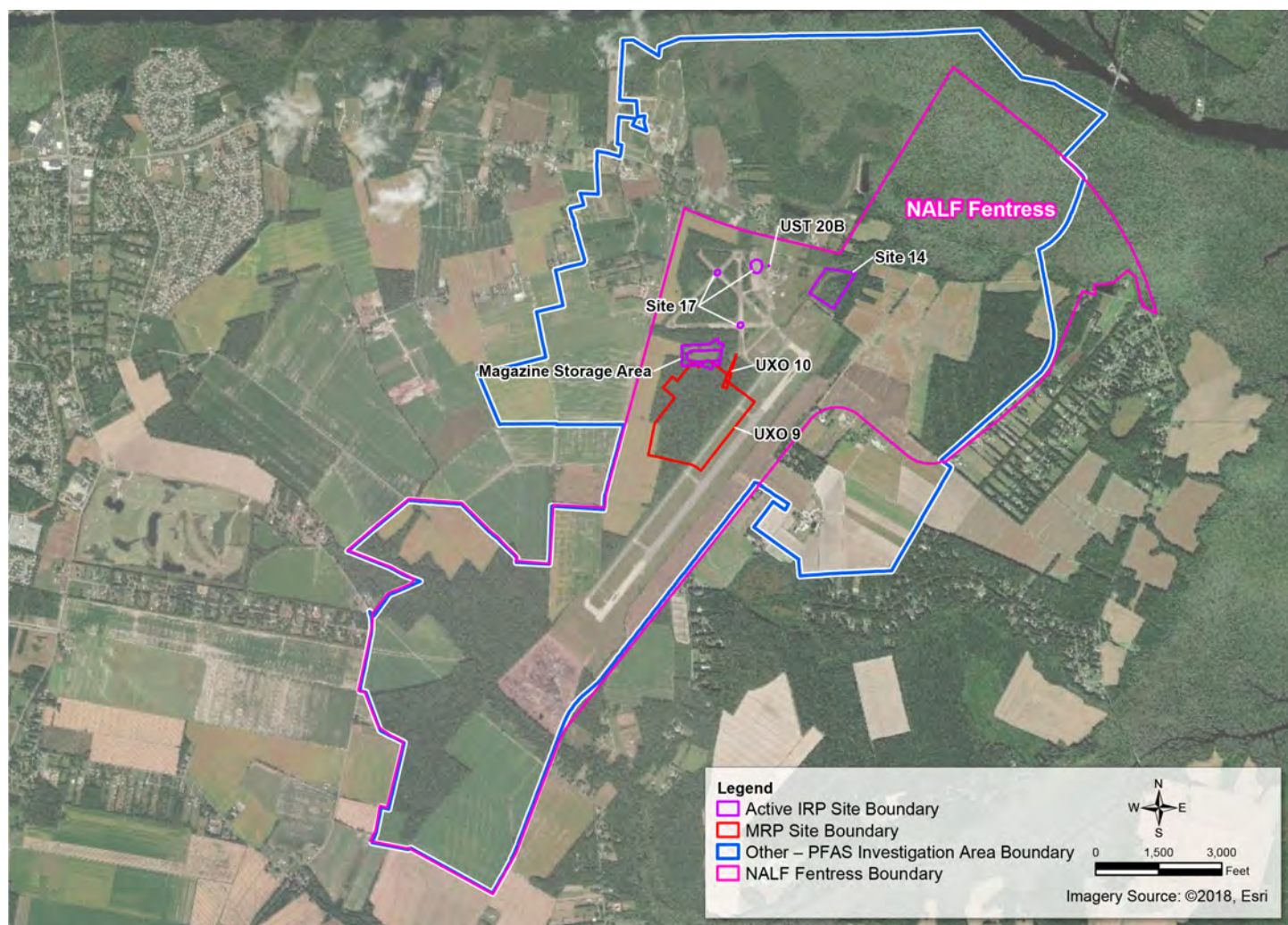
Currently, there are three active IRP sites/SWMUs and three active MRP sites at NALF Fentress (**Table 4**). As a result of the lack of formal closeout documentation for some sites, the Navy, in partnership with VDEQ, is reviewing formerly closed sites on a case-by-case basis and sites may be reopened as needed.

Active site locations as well as the extent of the ongoing PFAS investigation at NALF Fentress can be seen on **Figure 8**. Information on ongoing investigations is also included on the public website (**Section 4.2.9**).

TABLE 4  
ACTIVE SITES

IRP Sites	MRP Sites	Other Sites
Site 14 – Fentress Landfill (formerly SWMU 23)	UXO 9 – NALF Fentress Dive Bombing Targets	Various PFAS Source Areas
Site 17 – Firefighting Training Area (Fentress Burn Pit) (formerly SWMU 64)	UXO 10 – NALF Fentress Machine Gun Boresight Range	
Fuel Storage Tank, Building 20 (Underground Storage Tank 20B)	Magazine Storage Area	

FIGURE 8  
NALF FENTRESS ACTIVE SITES



## 6. References

CH2M HILL, Inc. (CH2M). 1986. *Final Progress Report Round 1 Verification Step, Naval Air Station Oceana, Virginia Beach, Virginia*.

CH2M. 2018. *Final Action Memorandum, Engineering Evaluation and Cost Analysis for Drinking Water, Naval Auxiliary Landing Field Fentress, Chesapeake, Virginia*.

GlobalSecurity.org (Global). 2018. *Naval Auxiliary Landing Field (NALF) Fentress*. Accessed August 13, 2019. <https://www.globalsecurity.org/military/facility/fentress.htm>.

Rogers, Golden, & Halpern. 1984. *Initial Assessment Study, Fleet Combat Training Center Atlantic, Dam Neck, Virginia Beach, Virginia*.

United States Bureau of Labor (U.S. Bureau of Labor). 2019. Bureau of Labor Statistics. Accessed August 8, 2019. <https://www.bls.gov/>.

United States Census Bureau (U.S. Census Bureau). 2019. QuickFacts Virginia; Virginia Beach City, Virginia (County). Accessed August 2, 2019. <https://www.census.gov/quickfacts/fact/table/chesapeakecityvirginia,VA/PST045218>.

United States Environmental Protection Agency (USEPA). 2002. *Superfund Community Involvement Handbook*. EPA 540-K-01-003. April.

USEPA. 2019. *Community Involvement Toolkit*. Accessed May 23, 2019. <https://www.epa.gov/superfund/superfund-community-involvement-tools-and-resources>.

Virginia Department of Education (VDE). 2019. *School Quality Profiles*. Accessed August 2, 2019. <http://schoolquality.virginia.gov/divisions/chesapeake-city-public-schools#desktopTabs-4>.



*City of Chesapeake drinking water filling station located off-installation for use by nearby residents*



# Appendix A

# Example Community Questionnaire

Naval Auxiliary Landing Field Fentress Community Involvement Plan





## 2018 Community Questionnaire for the Environmental Restoration Program

Naval Auxiliary Landing Field Fentress, Chesapeake, Virginia

Community Involvement Plan

### THANK YOU FOR TAKING THE TIME TO COMPLETE THIS QUESTIONNAIRE!

To gauge community awareness of the Environmental Restoration Program (ERP) at Naval Auxiliary Landing Field (NALF) Fentress, Chesapeake, Virginia, we ask you to complete this questionnaire. Your responses help us understand the community's concerns and information needs related to environmental investigation and remediation at the base.

**Your responses to this questionnaire will be kept anonymous to the extent permissible by law, and will help us develop a Community Involvement Plan.** This plan describes how NALF Fentress will communicate information about on-base environmental investigation and remediation activities with the community, and provides an opportunity for the public to be involved in the decision-making process.

**WEBSITE** <https://go.usa.gov/DyRj> (case sensitive)

If you would like additional information about the Environmental Restoration Program (ERP) at NALF Fentress, including specific information about each active site, please visit the website listed above. If you have questions about the ERP at NALF Fentress or this fact sheet, please contact Angela Jones, Remedial Project Manager at 757-341-0485 or e-mail [angela.jones1@navy.mil](mailto:angela.jones1@navy.mil). For other questions regarding NALF Fentress, contact Jennifer Hayes, NAS Oceana/NALF Fentress Public Affairs Officer, at 757-433-3131 or e-mail [jennifer.hayes@navy.mil](mailto:jennifer.hayes@navy.mil).

Thank you for your participation!

The personal information below is OPTIONAL, but is requested so we can understand the demographics in the local community (for example: 10 local residents, 5 business owners, etc.) and we can add your name to a mailing list, if requested. At a minimum, please provide your zip code.	
Name:	
Address:	Zip Code:
Organization:	
Phone (W):	Phone (H):
E-mail:	
How would you describe your "affiliation" with NALF Fentress? (check all that apply)	
<input type="checkbox"/> Employee Working on NALF Fentress	<input type="checkbox"/> Former Employee Working on NALF Fentress
<input type="checkbox"/> Retired Military	<input type="checkbox"/> Local Business Owner
<input type="checkbox"/> Homeowners Association Representative	<input type="checkbox"/> Local Resident
<input type="checkbox"/> Civic or Public Interest Organization Representative	<input type="checkbox"/> Public or Elected Official
<input type="checkbox"/> Other (please describe):	

**Please return this survey by December 10, 2018. Scan/email, or mail to:**

Ms. Angela Jones, P.E.  
 NAVFAC Mid-Atlantic  
 9742 Maryland Ave., Bldg N-26  
 Room 3208  
 Norfolk, VA 23511  
 Telephone: 757-341-0485 ▪ Email: [angela.jones1@navy.mil](mailto:angela.jones1@navy.mil)

**THANK YOU for taking the time to share your thoughts with us! Your participation is greatly appreciated.**

November 2018



Community Involvement Plan Questionnaire – NALF Fentress

1.	a. How long have you lived or worked in this community? <span style="float: right;"><input type="checkbox"/> &lt; 1 Year      _____ Years</span>
	b. How far do you live or work from NALF Fentress? <span style="float: right;"> <input type="checkbox"/> &lt; 1 Mile    <input type="checkbox"/> 1–5 Miles    <input type="checkbox"/> 5–10 Miles    <input type="checkbox"/> &gt; 10 Miles                 </span>

2.	On a scale of 1 to 5, with 1 being Poor and 5 being Excellent, how would you rank NALF Fentress's relationship with the surrounding community?		
	a. Trusting Relationship	c. Involved in the Community	
	b. Open Communication	d. Concerned for the Environment	

3.	a. How would you rate <u>the public's</u> attitude toward NALF Fentress?	<input type="checkbox"/> Excellent <input type="checkbox"/> Satisfactory <input type="checkbox"/> Poor
	b. How would you rate <u>your</u> attitude toward NALF Fentress?	<input type="checkbox"/> Excellent <input type="checkbox"/> Satisfactory <input type="checkbox"/> Poor

4.	a. Are you concerned about any environmental issues at NALF Fentress? <span style="float: right;"> <input type="checkbox"/> Yes    <input type="checkbox"/> Somewhat    <input type="checkbox"/> No                 </span>
	b. If yes, what issues? _____

5.	a. Based on facts, figures and data, do you think environmental releases at NALF Fentress have affected the surrounding community?	<input type="checkbox"/> Yes <input type="checkbox"/> No
	b. If yes, in what ways? (check all that apply)	
	<input type="checkbox"/> Health <input type="checkbox"/> Economic Loss <input type="checkbox"/> Perception of the Community <input type="checkbox"/> Environment	
	<input type="checkbox"/> Quality of Life <input type="checkbox"/> Other (please explain): _____	
	c. If yes, please explain what information led you to answer in this way? _____ _____ _____	

6.	a. Do you feel NALF Fentress is fulfilling its responsibility to protect and restore the environment?	<input type="checkbox"/> Yes <input type="checkbox"/> No <input type="checkbox"/> Don't Know
	b. Do you think the environmental restoration program (as presented in the attached fact sheet) when completed, will protect human health and the environment?	<input type="checkbox"/> Yes <input type="checkbox"/> No <input type="checkbox"/> Don't Know

7.	Before you received the factsheet included with this questionnaire, were you aware of:	
	a. Ongoing efforts to investigate and remediate past contamination at U.S. Navy facilities?	<input type="checkbox"/> Yes <input type="checkbox"/> No
	b. The NALF Fentress Environmental Restoration Program	<input type="checkbox"/> Yes <input type="checkbox"/> No
	If yes, what is your understanding of the program? (please explain) _____ _____	

Community Involvement Plan Questionnaire – NALF Fentress

8.	Do you think the U.S. Navy, U.S. Environmental Protection Agency (USEPA), and Virginia Department of Environmental Quality (DEQ) are viewed as trustworthy sources of information about the environmental restoration at NALF Fentress?	<table style="width: 100%; border: none;"> <tr> <td style="width: 33%;">U.S. Navy:</td> <td style="width: 33%;"><input type="checkbox"/> Yes</td> <td style="width: 33%;"><input type="checkbox"/> No</td> <td style="width: 33%;"><input type="checkbox"/> Not Sure</td> </tr> <tr> <td>USEPA:</td> <td><input type="checkbox"/> Yes</td> <td><input type="checkbox"/> No</td> <td><input type="checkbox"/> Not Sure</td> </tr> <tr> <td>Virginia DEQ:</td> <td><input type="checkbox"/> Yes</td> <td><input type="checkbox"/> No</td> <td><input type="checkbox"/> Not Sure</td> </tr> </table>	U.S. Navy:	<input type="checkbox"/> Yes	<input type="checkbox"/> No	<input type="checkbox"/> Not Sure	USEPA:	<input type="checkbox"/> Yes	<input type="checkbox"/> No	<input type="checkbox"/> Not Sure	Virginia DEQ:	<input type="checkbox"/> Yes	<input type="checkbox"/> No	<input type="checkbox"/> Not Sure
U.S. Navy:	<input type="checkbox"/> Yes	<input type="checkbox"/> No	<input type="checkbox"/> Not Sure											
USEPA:	<input type="checkbox"/> Yes	<input type="checkbox"/> No	<input type="checkbox"/> Not Sure											
Virginia DEQ:	<input type="checkbox"/> Yes	<input type="checkbox"/> No	<input type="checkbox"/> Not Sure											

9.	a. Have you talked with any U.S. Navy, USEPA, or VDEQ officials about the environmental restoration at NALF Fentress? <span style="float: right;"><input type="checkbox"/> Yes <input type="checkbox"/> No</span> If yes, which officials? _____ If yes, were they responsive to your concerns or questions? <span style="float: right;"><input type="checkbox"/> Yes <input type="checkbox"/> No</span>	
	b. If you had a question or comment about the environmental restoration program at NALF Fentress, who would you contact? _____	

10.	How do you typically receive information about local news and events? (select all that apply)  <input type="checkbox"/> The <i>Virginian-Pilot</i> <input type="checkbox"/> Television <input type="checkbox"/> Radio <input type="checkbox"/> Website <input type="checkbox"/> Other: _____ If TV or radio, which stations? _____ If a website, which site? _____
-----	--

11.	a. Are you aware of the NALF Fentress information repository at the Virginia Beach Meyera E. Oberndorf Central Library which includes a reference collection of general and NAS Oceana IRP site information?	<input type="checkbox"/> Yes <input type="checkbox"/> No
	b. If yes, have you made use of this resource? <span style="float: right;"><input type="checkbox"/> Yes <input type="checkbox"/> No</span>	c. Do you feel this is a convenient location? <span style="float: right;"><input type="checkbox"/> Yes <input type="checkbox"/> No</span>
	d. If no, where would you prefer it to be? _____	

12.	a. Are you aware that you can utilize the NALF Fentress/NAS Oceana public website to access the Administrative Record? The Administrative Record is a comprehensive record of all documents and resources used to make decisions about the IRP cleanup.	<input type="checkbox"/> Yes <input type="checkbox"/> No
	b. If yes, have you made use of this resource? <span style="float: right;"><input type="checkbox"/> Yes <input type="checkbox"/> No</span>	

13.	How often would you like to receive updates regarding environmental restoration activities at NALF Fentress?  <input type="checkbox"/> Monthly <input type="checkbox"/> Quarterly <input type="checkbox"/> Biannually <input type="checkbox"/> Annually <i>The collective responses received will be used to develop a schedule for updating the public.</i>
-----	---



Community Involvement Plan Questionnaire – NALF Fentress

14.	<p>Do you have any other comments or suggestions for the NALF Fentress environmental restoration team? Please note if you would like to remain informed of ongoing ERP activities at NALF Fentress.</p>
-----	---

# Appendix B

# Key Community Contacts

Naval Auxiliary Landing Field Fentress Community Involvement Plan





**VIRGINIA BEACH DEPARTMENT OF ECONOMIC DEVELOPMENT**

4525 MAIN ST STE 700  
VIRGINIA BEACH VA 23462  
ATTN OLUCC MEMBERSHIP

**CONGRESSWOMAN ELAINE LURIA**

283 CONSTITUTION DRIVE  
ONE COLUMBUS CENTER, SUITE 900  
VIRGINIA BEACH VA 23462

**SENATOR WILLIAM DESTEPH**

588 CENTRAL DR  
VIRGINIA BEACH VA 23454

**DELEGATE BARRY KNIGHT**

1852 MILL LANDING RD  
VIRGINIA BEACH VA 23457

**VIRGINIA AQUARIUM & MARINE SCIENCE CENTER**

717 GENERAL BOOTH BLVD  
VIRGINIA BEACH VA 23451  
ATTN CYNTHIA WHITBREF-SPANOULIS

**CAMP PENDLETON STATE MILITARY RESERVATION**

203 RED HORSE DR  
VIRGINIA BEACH VA 23451  
ATTN LTC TIMOTHY PILLION, POST COMMANDER

**HAMPTON ROADS SANITATION DISTRICT**

1434 AIR RAIL AVE  
VIRGINIA BEACH VA 23455  
ATTN JOHN J DANO PE

**SEATACK COMMUNITY CIVIC LEAGUE**

PO BOX 4252  
VIRGINIA BEACH VA 23454  
ATTN GEORGE MINNS

**SCARBOROUGH SQUARE CIVIC LEAGUE**

3328 SCARBOROUGH WAY  
VIRGINIA BEACH VA 23453  
ATTN M. LYN HENRY

**LAMPLIGHT MANOR CIVIC LEAGUE**

2929 AUGUSTA CIRCLE  
VIRGINIA BEACH VA 23453  
ATTN JOE CONNER

# Appendix C

# Example Public Notice and Fact Sheet

Naval Auxiliary Landing Field Fentress Community Involvement Plan





## **Naval Air Station (NAS) Oceana and Naval Auxiliary Landing Field (NALF) Fentress Machine Gun Boresight Ranges Public Notice**

The Department of the Navy (Navy) recently completed a study to evaluate alternatives for a response action at the NAS Oceana and NALF Fentress Machine Gun Boresight Ranges (MGBRs). The Comprehensive Environmental Response, Compensation and Liability Act (CERCLA) requires an Engineering Evaluation/Cost Analysis (EE/CA) to evaluate removal alternatives prior to conducting a response action. The Navy, as lead agency, has prepared two EE/CAs (one for each site) in accordance with CERCLA and the National Contingency Plan (NCP).

NAS Oceana is located within the southeastern portion of Virginia Beach, Virginia, approximately 2 miles west of the Atlantic Ocean. The installation encompasses just over 5,300 acres and includes the former MGBR within the northwestern portion of the site. The former MGBR consists of a soil berm and concrete backstop, which was used as a testing range for aircraft-mounted machine guns and eventually converted into a small arms firing range. Ammunition used at the former range reportedly consisted of .50- and .30-caliber rounds for aircraft guns, as well as 9-millimeter (mm) small arms rounds.

NALF Fentress is located in Chesapeake, Virginia, approximately 7 miles southwest of NAS Oceana. The installation encompasses just over 2,500 acres and includes the former MGBR within the central portion of the site. The former MGBR consists of a soil berm and concrete backstop, which was initially used as maintenance and testing range for aircraft-mounted machine guns, but was later converted to a pistol range. Ammunition used at this former range reportedly consisted of .50- and .30-caliber rounds for aircraft guns, as well as 7mm, 9mm, and .38-caliber small arms rounds, and shotgun rounds.

The EE/CAs address the evaluation of alternatives for the treatment of surface and subsurface soils containing elevated metals concentrations at the NAS Oceana and NALF Fentress MGBRs. As a result of the EE/CAs, the Navy is proposing to conduct a Non-Time-Critical Removal Action (NTCRA) at NAS Oceana and NALF Fentress. The recommended alternative is removal of the contaminated soil. The NTCRAs are scheduled for performance beginning in September 2017 and will require 2 months to complete.

The Navy will make the EE/CA reports available for public review for 30 days at the Virginia Beach Central Library from June 8 until July 8, 2017. The Virginia Beach Public Library is located at 4100 Virginia Beach Boulevard, Virginia Beach, VA 23452. Public comments on the EE/CA reports, including the commenter's name and address, will become part of the Site Administrative Record and the Navy will provide a response to significant comments.

For additional information, please contact:

Angela Jones  
Naval Facilities Engineering Command Mid-Atlantic  
9742 Maryland Avenue  
Norfolk, VA 23511  
757-341-0485



## NAVAL AUXILIARY LANDING FIELD FENTRESS Environmental Restoration Program 2018 Environmental Restoration Success Story

### WASTEWATER TREATMENT PLANT PFAS REMOVAL UPGRADES

The groundwater at NALF Fentress has become contaminated with PFOS, PFOA, and other PFAS. Drinking water plant upgrades have been made. However, since groundwater is used as the potable water supply at NALF Fentress, PFAS appeared to pass through the potable water system into the wastewater system. Therefore, the wastewater, which is treated and collected in holding ponds onsite for seasonal land application, requires additional treatment to remove PFAS until the accumulated contaminants in the wastewater system are removed.

**STATUS:** The Navy conducted a study in 2016 to determine the most effective treatment option for NALF Fentress wastewater. A system that used granular activated carbon (GAC) was selected as the wastewater treatment method. The wastewater treatment system was installed in early fiscal year 2017 as part of the effluent treatment process. After installation of the two GAC tanks, teams tested the water to ensure that the treatment process was working. The Navy periodically retests to ensure the system is operating properly, and adjustments are made, if necessary.

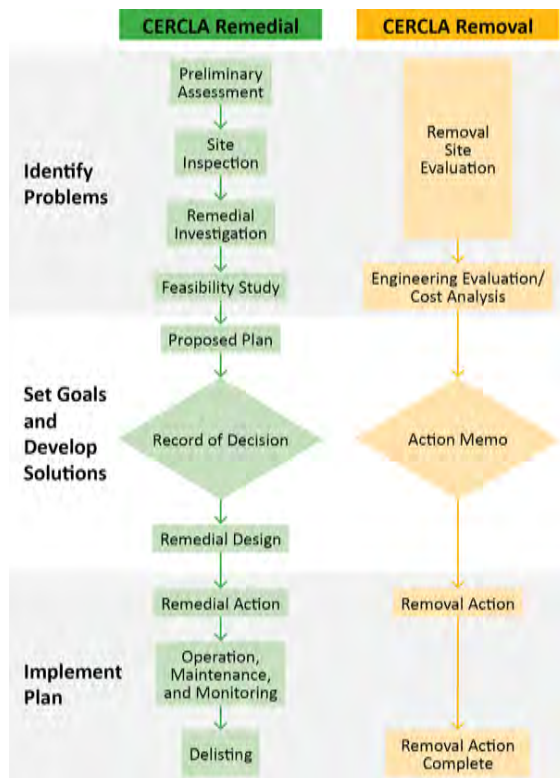


## Environmental Restoration *CLEAN. PROTECT. RESTORE.*

This brochure has been created as part of the Navy's Environmental Restoration community outreach program. The Navy provides the public with information on the ERP at NALF Fentress and other Navy facilities. To facilitate community outreach, the Navy ERP focuses on communicating how the Navy, USEPA, and states work together to restore areas where former Navy operations have caused environmental contamination.

### NALF FENTRESS ENVIRONMENTAL INVESTIGATION PROCESS

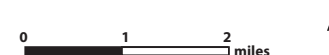
Under the CERCLA process, investigations and restoration of contaminated sites are conducted through the following steps:



NG0404181229VBO



## NAVAL AUXILIARY LANDING FIELD FENTRESS Chesapeake, Virginia Environmental Restoration Program



This fact sheet provides information on environmental investigation and restoration activities at Naval Auxiliary Landing Field (NALF) Fentress.

If you would like additional information about the Environmental Restoration Program (ERP) at NALF Fentress, contact Angela Jones, Remedial Project Manager, at 757-341-0485 or e-mail [angela.jones1@navy.mil](mailto:angela.jones1@navy.mil).

For other questions regarding NALF Fentress, contact Jennifer Hayes, NAS Oceana/NALF Fentress Public Affairs Officer, at 757-433-3131 or e-mail [jennifer.hayes@navy.mil](mailto:jennifer.hayes@navy.mil).

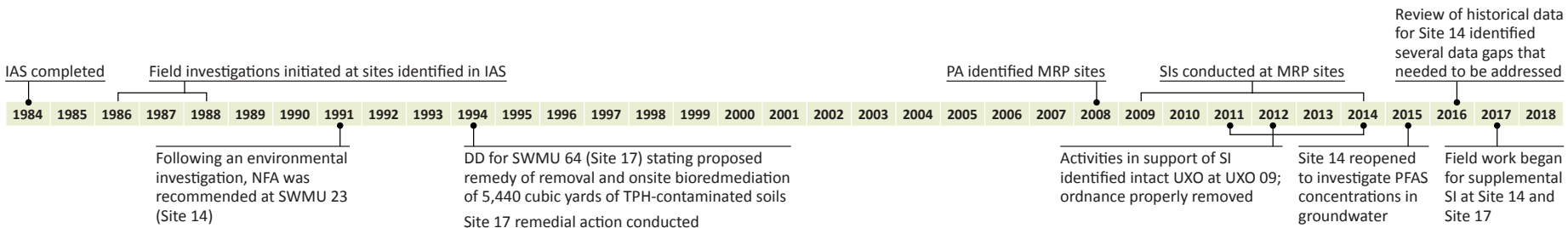
**FOR MORE INFORMATION**  
<https://go.usa.gov/DyRj>

NALF Fentress/NAS Oceana Information Repository –  
Meyera E. Oberndorf Central Library | Virginia Beach

08A10Z1610ES01B

# NAVAL AUXILIARY LANDING FIELD FENTRESS Environmental Restoration Program (ERP)

**ENVIRONMENTAL RESTORATION HISTORY AND HIGHLIGHTS** – The ERP was established to address releases of hazardous substances, pollutants, contaminants, and military munitions at military installations. To manage the ERP process, NALF Fentress works in partnership with the Virginia Department of Environmental Quality and the United States Environmental Protection Agency (USEPA) using the Comprehensive Environmental Response, Compensation, and Liability Act (CERCLA) process.



## ENVIRONMENTAL RESTORATION PROGRAM SITES

Active ERP sites at NALF Fentress (see figure) include the following:

### Active Installation Restoration Program Sites

- Site 14 – Fentress Landfill
- Site 17 – Fire Fighting Training Area (Fentress Burn Pit)
- UST 20B – Underground Storage Tank 20B
- Other areas that are part of the installation-wide PFAS investigation\*

### Munitions Response Program Sites

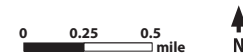
- UXO 9 – NALF Fentress Dive Bombing Targets
- UXO 10 – NALF Fentress Machine Gun Boresight Range

\* PFAS are compounds with heat-resistant properties that were used in some formulations of AFFF (fire fighting foam). Two of these compounds, PFOS and PFOA, were present in AFFF used by the Navy. See the following website for more detail: <http://www.secnv.navy.mil/eie/Pages/PFC-PFAS.aspx>.



### Legend

- NALF Fentress boundary
- Active ERP site
- Active ERP site boundary
- Active MRP site boundary



AFFF	aqueous film forming foam
CERCLA	Comprehensive Environmental Response, Compensation, and Liability Act
DD	Decision Document
ERP	Environmental Restoration Program
GAC	granular activated carbon
IAS	Initial Assessment Study
IRP	Installation Restoration Program
NALF	Naval Auxiliary Landing Field
NAS	Naval Air Station
NFA	No Further Action
MRP	Munitions Response Program
PA	Preliminary Assessment
PFAS	per- and polyfluoroalkyl substance(s)
PFOA	perfluorooctanoic acid
PFOS	perfluorooctane sulfonate
SI	Site Inspection
SWMU	solid waste management unit
TPH	total petroleum hydrocarbon
USEPA	United States Environmental Protection Agency
UXO	unexploded ordnance