

# Public Meeting

## World War II Landfill (Site 2) Proposed Plan

December 2, 2014



Gulfport Public Library  
1708 25th Avenue  
Gulfport, MS 39501

# Meeting Format and Content



The World War II Landfill (Site 2) Proposed Plan Public Meeting was held from 2-4 pm on December 2, 2014 at the Gulfport Public Library. The Public Meeting marked the opening of a 30-day Public Comment Period for the Proposed Plan.



The Proposed Plan was presented in a poster session format to provide an opportunity for community members to engage in an informal dialogue with the project team.

A court reporter was present to record discussions, questions, and comments at the meeting. A copy of the meeting transcript is available in the Administrative Record for the NCBC Gulfport Environmental Restoration Program. The Administrative Record File is available online at <http://go.usa.gov/ZVGV>.



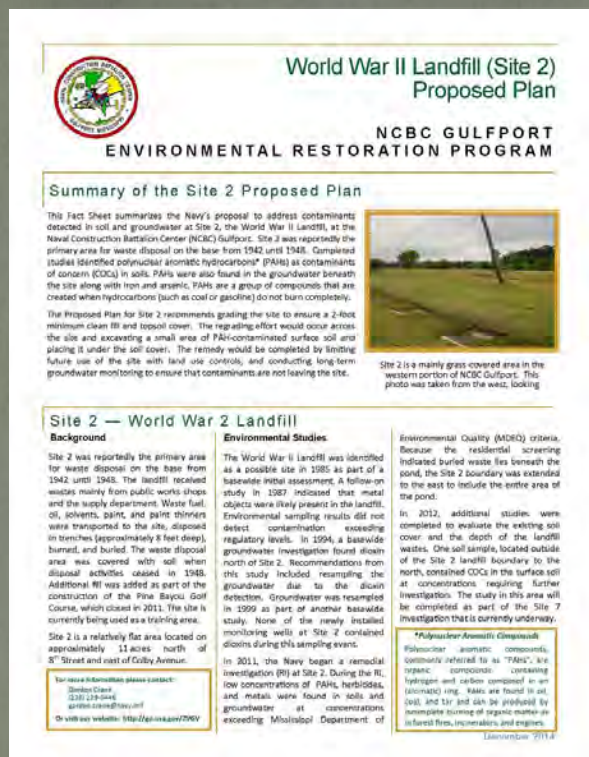
# Meeting Content



Posters on display included:

- An Overview of Site 2, the World War II Landfill,
- Results of the Remedial Investigation, and
- The Proposed Cleanup Alternative for Site 2.

Posters describing polynuclear aromatic hydrocarbons (PAHs), a contaminant found in soil and groundwater at the site, were also on display.



Meeting handouts included copies of the Proposed Plan, a Proposed Plan Fact Sheet (shown above), copies of the PAH poster content, and a Glossary of Terms and Acronym List.

The Proposed Plan and Proposed Plan Fact Sheet are available in the NCBC Gulfport ERP Administrative Record File.



# Meeting Outreach

A Public Notice (shown on the right) was placed in the Sun Herald on November 30, 2014.

- Meeting Announcement -

## Restoration Advisory Board (RAB) NCBC Gulfport

- Topics -

Rubble Disposal Area (Site 7) Remedial Investigation Update  
Haul Road Removal North of 28<sup>th</sup> Street

**Where:** Isiah Fredericks Community Center  
3312 Martin Luther King Blvd  
Gulfport, MS 39501

**When:** Monday, November 3, 2014  
6:00 - 7:30 PM\*

\* Topics will be presented in a poster session format. Please arrive any time between 6:00 and 7:30 PM to discuss topics with project scientists and engineers.



## NCBC Gulfport Environmental Public Meeting



**Topic:** The Proposed Plan Site 2,  
World War II Landfill

**Tuesday, December 2, 2014**  
2:00 – 4:00 PM

**Gulfport Public Library**  
1708 25th Avenue  
Gulfport, Mississippi 39501

The Navy will be discussing their Proposed Plan to address contaminants found in soils and groundwater at the former Navy landfill known as Site 2 at the Naval Construction Battalion Center (NCBC) Gulfport. The plan proposes to regrade surface soil to promote drainage and site reuse, maintain an existing 2-foot minimum clean soil cover, protect the soil cover from eroding with sod, restrict future land use, and monitor groundwater to ensure that contaminants are not leaving the site. The improved landfill cover will prevent direct contact with the contaminated contents of the landfill and would, therefore, be protective of human health and the environment.

A **Public Comment Period** for the cleanup proposal will begin on December 2, 2014, and end on January 5, 2015. Copies of the Proposed Plan and other associated reports will be available for review during the comment period at a the NCBC Gulfport Information Repository located in the Gulfport Public Library at 1708 5th Avenue, Gulfport, Mississippi, 39501.

For more information please contact Gordon Crane

Phone: 228-229-0446

E-mail: gordon.crane@navy.mil

Or visit our website: <http://go.usa.gov/ZVGV>



Gulfport, Mississippi

A flyer (shown on the left) was mailed to the interested parties on the RAB mailing list.

# Meeting Attendees

## **RAB Members:**

Gordon Crane (NCBC Gulfport Representative)

Philip Shaw

Bob Fisher (Naval Facilities Engineering Command)

## **Community Members:**

Dorothy Ladner

## **NCBC Gulfport Representatives:**

Kevin Gillum (Community Planning Liaison Officer)

Rob Mims (Public Affairs Officer)

Lisa Noble (Environmental Manager)

Robert Shiyou (Public Works Director)

## **Technical Support:**

Greg Roof (Tetra Tech Project Manager)

Nancy Rouse (Tetra Tech Community Relations Specialist)

## **Mississippi Department of Environmental Quality (MDEQ):**

Gloria Tatum (Office of Community Engagement)

LaTasha Jefferson (Office of Community Engagement)

Casandra Johnson (Office of Community Engagement)



# World War II Landfill - Site 2 Background and Description



Site 2 is a former 11- acre landfill located to the north in the western section of NCBC Gulfport.



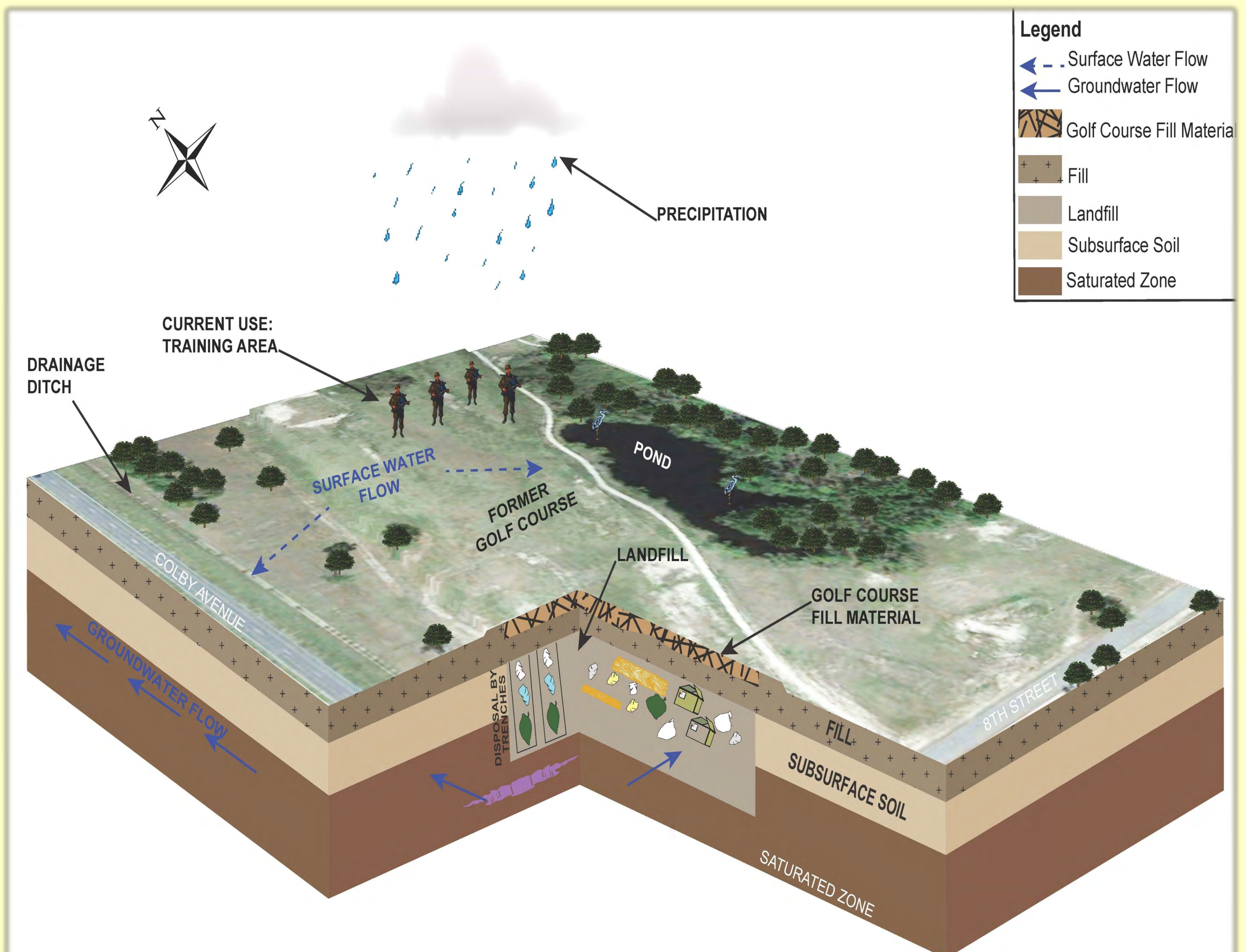
A shallow pond is located on the eastern side of Site 2.

Site 2 is mainly a grass covered area in the western portion of NCBC Gulfport.



## Site 2 History

- The World War II landfill operated from 1942-1948.
- Wastes, mainly from the supply department and public work shops, were moved to the site, burned, placed in trenches, and buried.
- Types of waste included:
  - ❖ used waste fuel
  - ❖ oil
  - ❖ solvents
  - ❖ paint
  - ❖ paint thinners
- The area was covered with additional soil when disposal activities ceased in 1948 and again when the golf course was constructed in the mid-1990's.
- The site has been most recently used as a military training area.

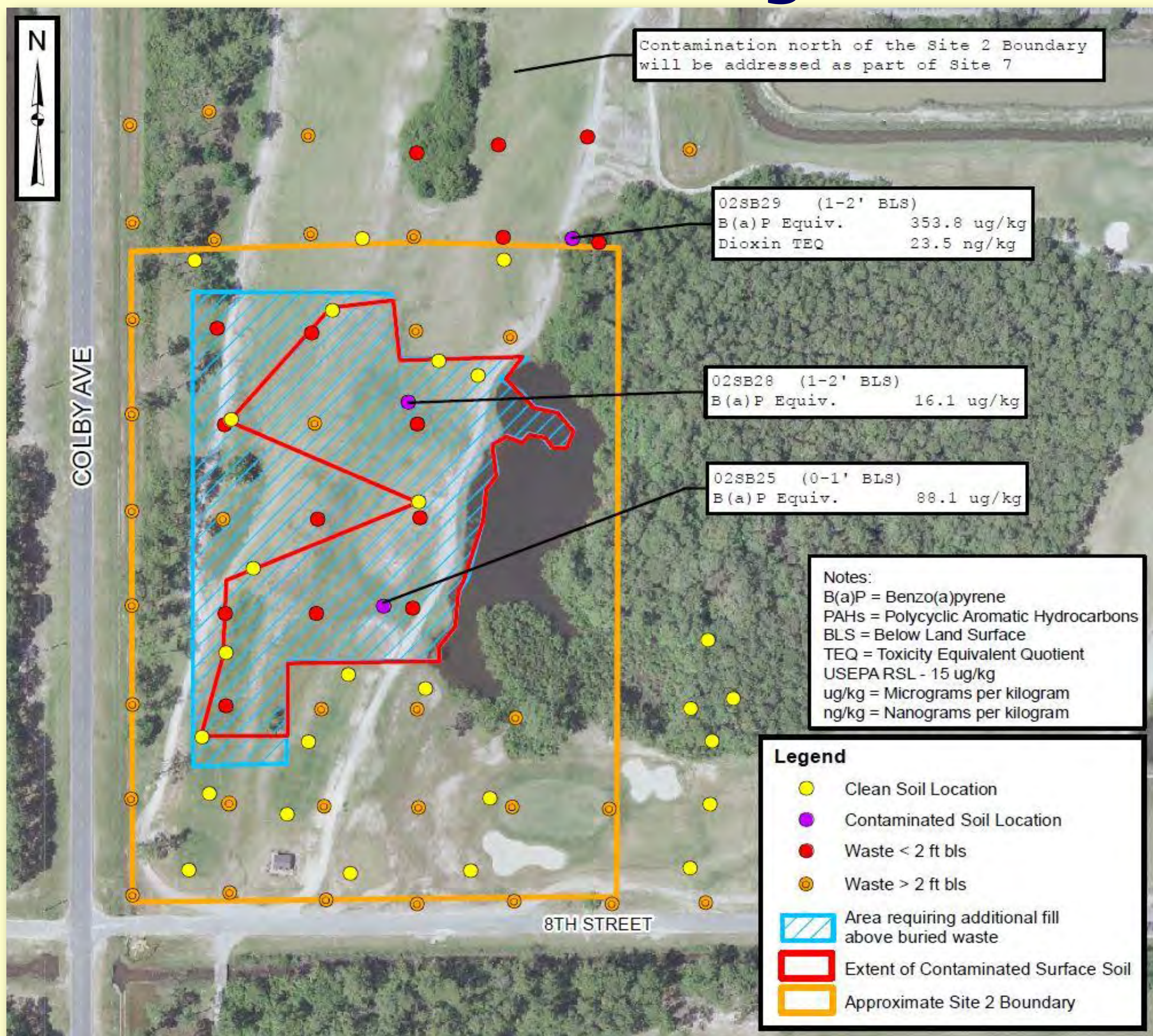


The Conceptual Site Model illustrates our current understanding of site conditions.



# World War II Landfill - Site 2

## Remedial Investigation



Site 2 boundary and the approximate extent of contaminated surface soil.

### Characterizing Site 2

#### Landfill Size and Soil Cover Thickness



Instruments such as magnetometers were used to characterize the site.

- Magnetometers and similar instruments were used to determine the area where waste had been placed in the landfill.
  - The extent of disposal area was identified –
- Landfill gas was monitored to test for the presence of methane and hydrogen sulfide.
  - Landfill gases were not found –
- Cores were taken to measure the depth of the current soil cover.
  - Results are shown in the figure above –

### Characterizing Site 2

#### Identifying Contaminants of Concern

- Surface soil, subsurface soil, sediment, surface soil, and ground water were sampled and analyzed at the site.
- Human Health and Ecological Risk Assessments were completed to evaluate contaminants found.
- The Human Health Risk Assessment identified **polycyclic aromatic hydrocarbons (PAHs)** as a potential human health risk in surface soil, subsurface soil, and groundwater.
- **Arsenic** and **iron** were also found to be a potential human health risk in groundwater beneath the site.
- No significant ecological impacts were found.
- Dioxin was found in one sample (located on the north side of the site near Site 7). This finding will be addressed along with the remedy for Site 7.



# World War II Landfill - Site 2

## Proposed Remedy

### The Feasibility Study and Proposed Plan

A **Feasibility Study** was completed to evaluate three possible cleanup alternatives for Site 2:

1. The **No Action** alternative is always evaluated as a baseline for comparing alternatives.
2. The **Cover and Land Use Control/Long Term Monitoring (LUC/LTM)** alternative includes regrading of existing surface soil to promote drainage, installing and maintaining a 2-foot minimum clean soil cover, planting grass or other plants to prevent soil erosion, implementing land use controls, and long-term sampling of groundwater to detect if contaminants are moving from the site.
3. The **Treatment and Capping** alternative includes all of the actions in the Cover and LUC/LTM alternative plus a three-layered landfill cover consisting of topsoil, compacted soil, and a landfill gas-venting system, along with groundwater treatment.

### Preferred Remedy for Site 2

The **Navy's** Proposed Plan recommends **Cover and LUC/LTM** as the Preferred Remedy for Site 2. This alternative has been shown to be protective of human health and the environment without the additional costs of implementing the Treatment and Capping alternative.

#### Regrade Surface Soil Across the Site



- The site will be regraded to promote drainage and site reuse.
- PAH-contaminated surface soil would be excavated and placed beneath soil cover.

This photo was taken at Site 3 and is an example how soil surface soil would be regraded at Site 2.

#### Plant Grass



Grass or other shallow rooted vegetation would be planted over the completed landfill cover to prevent soil erosion.

This photo was taken at Site 3 and is an example of how sod will be planted at Site 2.

#### Install and Maintain Current Soil Cover



- Install and maintain a 2-foot soil cover composed of clean fill and topsoil.
- The soil cover prevents contact with landfill contents and prevents transportation of landfill contents by erosion.

#### Land Use Controls & Long-term Monitoring



- Site controls would include restricting development and groundwater use.
- Periodic inspections and annual monitoring would be required to check the integrity of the soil cover.
- Periodic monitoring would ensure that contaminants were not leaching into the groundwater.