



Why Is the Navy Sampling Drinking Water Wells Nationwide?

The Navy is currently addressing exposure to PFOA and PFOS in drinking water near NAS Whiting Field and its outlying landing fields.

- In 2016, the EPA established a lifetime drinking water health advisory (70 ppt) for two PFAS (PFOA and PFOS).
- The Navy issued a policy to address PFOA and PFOS in drinking water.
- The main historical source of PFOA and PFOS was firefighting foam.
 - No longer used for training.
 - Currently only used in lifesaving emergency measures.
- The Navy is investigating all of our installations to identify PFOA and PFOS exposure.



Image: Tosab Photography / unsplash

FOR MORE INFORMATION
visit <http://go.usa.gov/xAEQF>
or scan the QR code →



ACRONYMS & ABBREVIATIONS

EPA	U.S. Environmental Protection Agency
NAS	Naval Air Station
OLF	Outlying Landing Field
PFAS	per- and polyfluoroalkyl substances

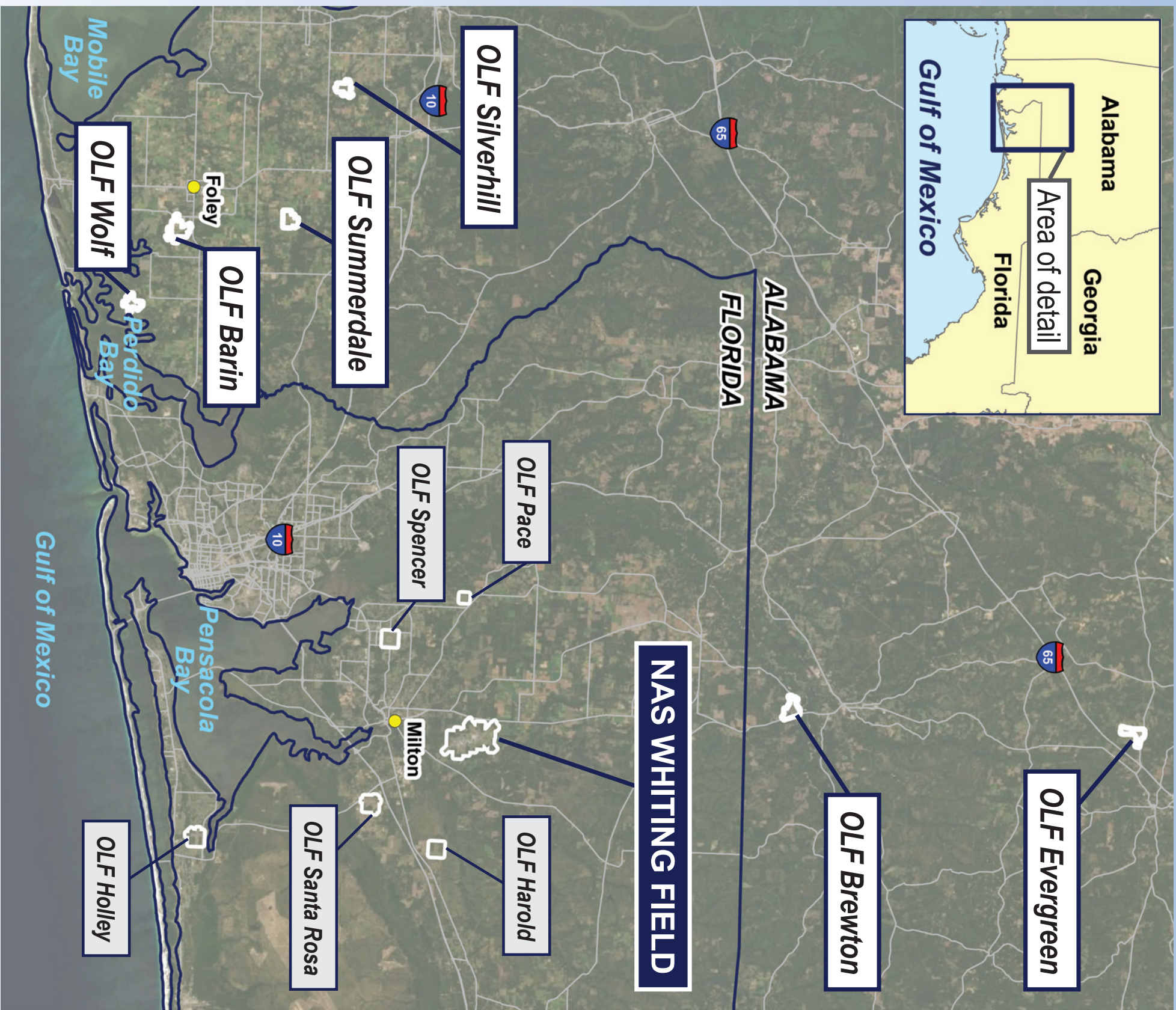
PFOA	perfluorooctanoic acid
PFOS	perfluorooctane sulfonate
ppt	part(s) per trillion

Note: "Health advisory" refers to the EPA lifetime drinking water health advisory for PFOA and/or PFOS (70 ppt).



NAS Whiting Field

Outlying Landing Fields

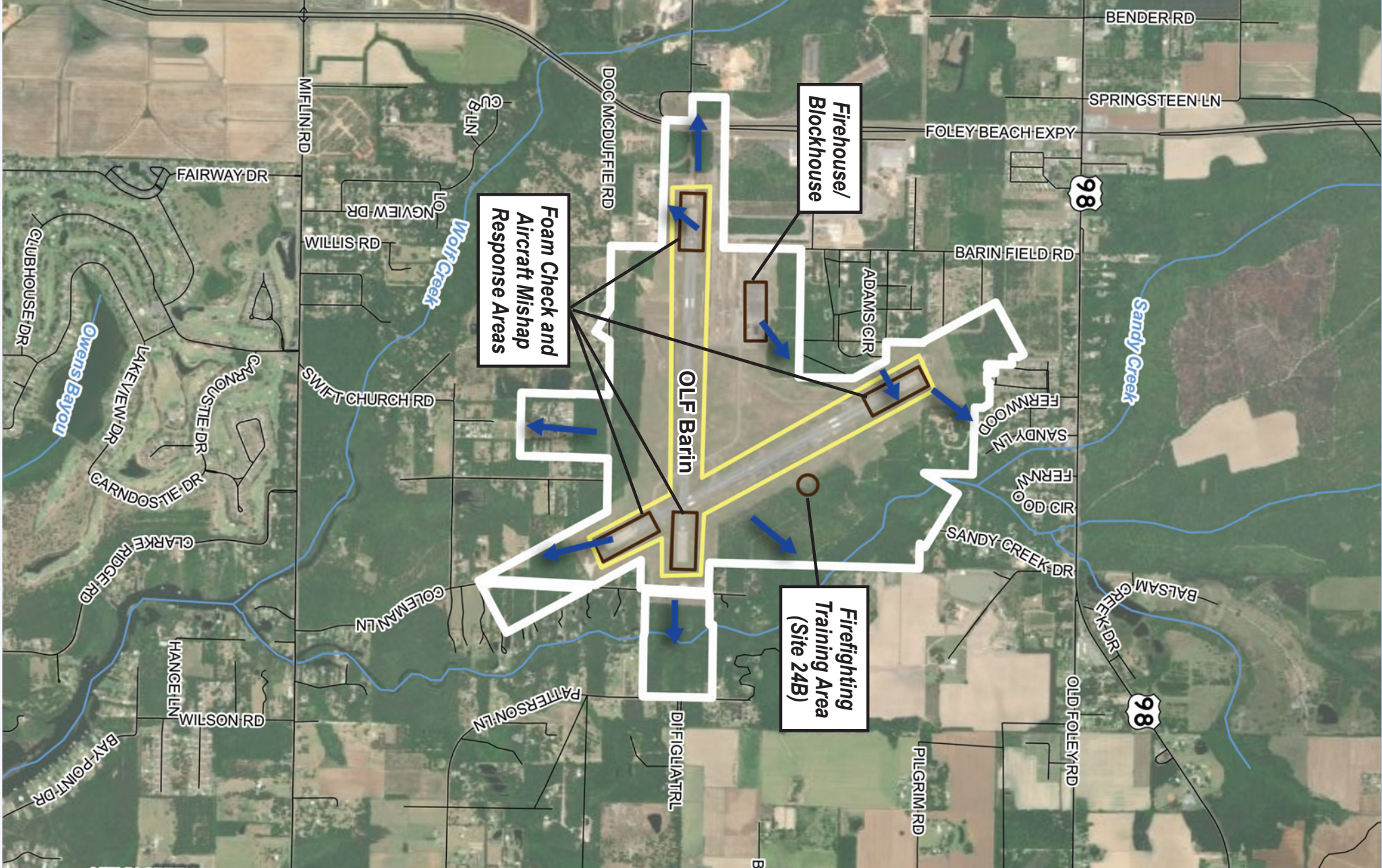


FOR MORE INFORMATION
visit <http://go.usa.gov/AEQF>
or scan the QR code →



OLF Barin

On-Base PFAS Release Areas



- PFAS release areas have been identified on OLF Barin.
- Types of PFAS release areas on OLF Barin include:
 - Runways
 - Firefighting Training Area
 - Firehouse/Blockhouse
 - Foam check
 - Crash response

- LEGEND**
- PFAS release area
 - Runways
 - Base boundary
 - Surface water
 - Estimated groundwater flow direction



ACRONYMS & ABBREVIATIONS

EPA	U.S. Environmental Protection Agency	PFOA	perfluorooctanoic acid
NAS	Naval Air Station	PFOS	perfluorooctane sulfonate
OLF	Outlying Landing Field	ppt	part(s) per trillion
PFAS	per- and polyfluoroalkyl substances		

Note: "Health advisory" refers to the EPA lifetime drinking water health advisory for PFOA and/or PFOS (70 ppt).

FOR MORE INFORMATION
visit <http://go.usa.gov/AEEQF>
or scan the QR code →



OLF Barin Off-Base Drinking Water

Sampling Area with PFOA and PFOS Results

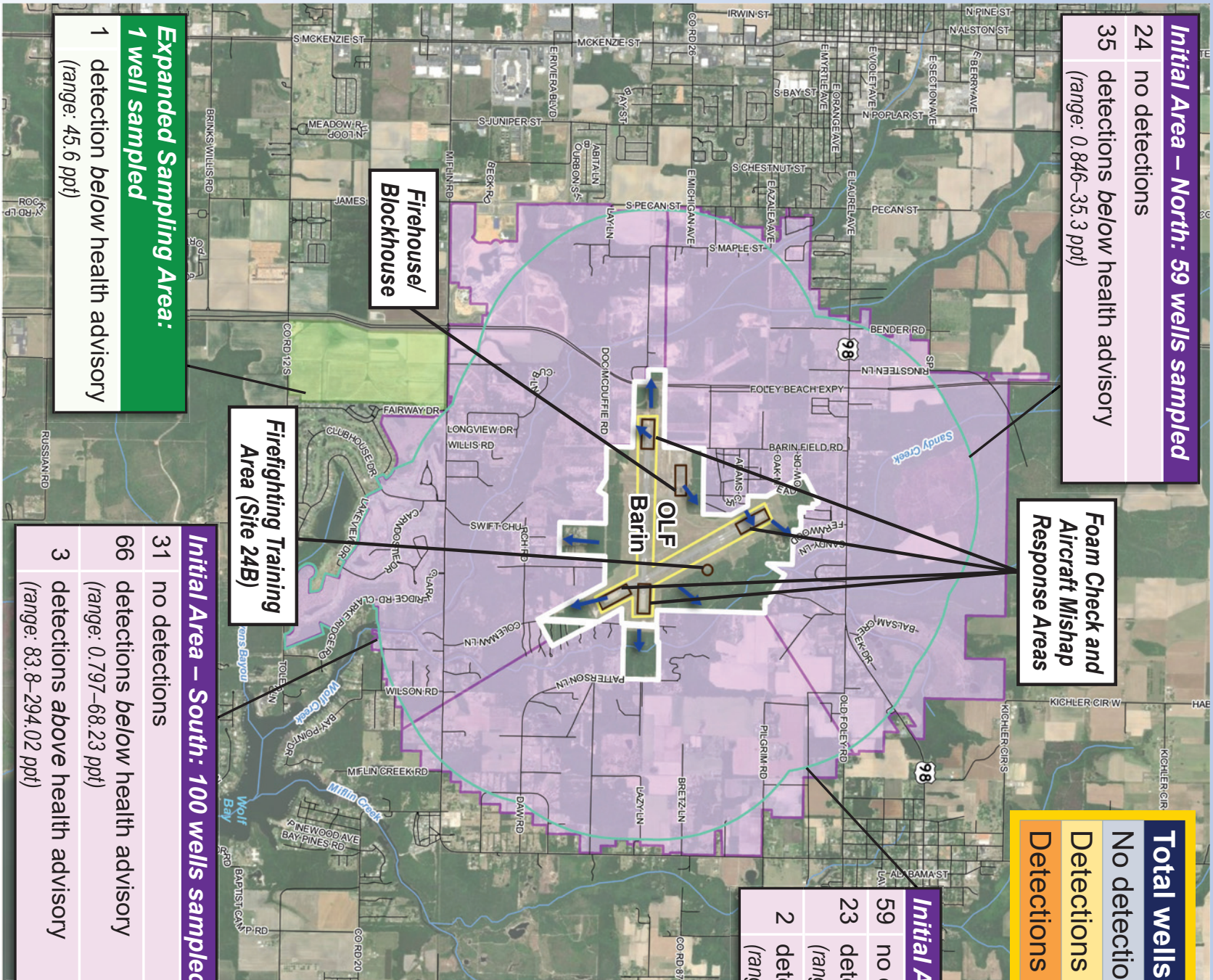
All properties with results above the health advisory have been provided bottled water for drinking and cooking until a long-term solution is implemented. Some properties have been connected to public water.

Initial Area – North: 59 wells sampled	
24	no detections
35	detections below health advisory (range: 0.846–35.3 ppt)

Foam Check and Aircraft Mishap Response Areas

Total wells sampled		244
No detections		114
Detections below health advisory		125
Detections above health advisory		5

Initial Area – East: 84 wells sampled	
59	no detections
23	detections below health advisory (range: 0.832–62.31 ppt)
2	detections above health advisory (range: 124.48–206.6 ppt)



Expanded Sampling Area: 1 well sampled	
1	detection below health advisory (range: 45.6 ppt)

Firefighting Training Area (Site 24B)

Initial Area – South: 100 wells sampled	
31	no detections
66	detections below health advisory (range: 0.797–68.23 ppt)
3	detections above health advisory (range: 83.8–294.02 ppt)

ACRONYMS & ABBREVIATIONS	
EPA	U.S. Environmental Protection Agency
NAS	Naval Air Station
OLF	Outlying Landing Field
PFAS	per- and polyfluoroalkyl substances
	PFOA perfluorooctanoic acid
	PFOS perfluorooctane sulfonate
	ppt part(s) per trillion

Note: "Health advisory" refers to the EPA lifetime drinking water health advisory for PFOA and/or PFOS (70 ppt).

FOR MORE INFORMATION
visit <http://go.usa.gov/AEaEQ>
or scan the QR code →



OLF Barin Off-Base Drinking Water

Sampling PFOA and PFOS Results

Sampling Area	Sample	PFOS (ppt)	Q	PFOA (ppt)	Q	PFOS + PFOA (ppt)	Result Interpretation
Initial Area – North	1	24.3		11		35.3	below health advisory
	2	3.38		20.9		24.28	below health advisory
	3	14.3		7.86		22.16	below health advisory
	4	11.7		7.5		19.2	below health advisory
	5	4.98		13.3		18.28	below health advisory
	6	13.9		2.88		16.78	below health advisory
	7	9.63		4.79		14.42	below health advisory
	8	9.33		3.64		12.97	below health advisory
	9	5.88		5.67		11.55	below health advisory
	10	5.44		4.96		10.4	below health advisory
	11	3.08		4.18		7.26	below health advisory
	12	4.9		2.25		7.15	below health advisory
	13	4.71		2.41		7.12	below health advisory
	14	4.2		2.37		6.57	below health advisory
	15	2.13		3.96		6.09	below health advisory
	16	2.65		3.22		5.87	below health advisory
	17	1.89	J	3.89		5.78	below health advisory
	18	0.894	J	3.82		4.714	below health advisory
	19	0.995	J	3.13		4.125	below health advisory
	20	2.51		1.32	J	3.83	below health advisory
	21	2.33		1.5	J	3.83	below health advisory
	22	1.52	J	2.3		3.82	below health advisory
	23	1.23	J	2.51		3.74	below health advisory
	24	0.87	J	1.57	J	2.44	below health advisory
	25	1.51	J	0.765	J	2.275	below health advisory
	26	0.838	J	1.43	J	2.268	below health advisory
	27	1.99	J	not detected		1.99	below health advisory
	28	1.98	J	not detected		1.98	below health advisory
	29	1.04	J	0.866	J	1.906	below health advisory
	30	not detected		1.89	J	1.89	below health advisory
	31	0.951	J	0.922	J	1.873	below health advisory
	32	not detected		1.55	J	1.55	below health advisory
	33	not detected		1.41	J	1.41	below health advisory
	34	not detected		1.21	J	1.21	below health advisory
	35	0.846	J	not detected		0.846	below health advisory
	36–59	not detected		not detected		not detected	not detected
Initial Area – East	60	11.6		195		206.6	above health advisory
	61	1.48	J	123		124.48	above health advisory
	62	8.61		53.7		62.31	below health advisory
	63	9.84		28.1		37.94	below health advisory
	64	5		20.9		25.9	below health advisory
	65	12.7	J	7.8	J	20.5	below health advisory
	66	3.14		9.01		12.15	below health advisory
	67	8.43		not detected		8.43	below health advisory
	68	4.58		2.18		6.76	below health advisory
	69	4.41		1.29	J	5.7	below health advisory
	70	0.912	J	3.98		4.892	below health advisory
	71	2.99		1.51	J	4.5	below health advisory
	72	not detected		3.69		3.69	below health advisory
	73	1.88	J	1.68	J	3.56	below health advisory
	74	2.15		1.37	J	3.52	below health advisory
	75	2.28		not detected		2.28	below health advisory
	76	0.859	J	1.4	J	2.259	below health advisory
	77	not detected		2.23		2.23	below health advisory
	78	not detected		1.57	J	1.57	below health advisory
	79	not detected		1.41	J	1.41	below health advisory
	80	1.33	J	not detected		1.33	below health advisory
	81	not detected		1.09	J	1.09	below health advisory
	82	0.992	J	not detected		0.992	below health advisory
	83	not detected		0.902	J	0.902	below health advisory
	84	not detected		0.832	J	0.832	below health advisory
	85–143	not detected		not detected		not detected	not detected

Note: The "Q" columns identify data qualifiers that apply to given results. A "J" (estimated value) indicates the value reported for the analyte is detected below the LOQ. The value reported is considered estimated.

FOR MORE INFORMATION

visit <http://go.usa.gov/AEQF>

or scan the QR code →

ACRONYMS & ABBREVIATIONS			
EPA	U.S. Environmental Protection Agency	PFOA	perfluorooctanoic acid
NAS	Naval Air Station	PFOS	perfluorooctane sulfonate
OLF	Outlying Landing Field	ppt	part(s) per trillion
PFAS	per- and polyfluoroalkyl substances		

Note: "Health advisory" refers to the EPA lifetime drinking water health advisory for PFOA and/or PFOS (70 ppt).



OLF Barin Off-Base Drinking Water

Sampling PFOA and PFOS Results, continued

Sampling Area	Sample	PFOS (ppt)	Q	PFOA (ppt)	Q	PFOS + PFOA (ppt)	Result Interpretation
Initial Area – South	144	3.02		291		294.02	above health advisory
	145	96.5		1.01	J	97.51	above health advisory
	146	28.2		55.6		83.8	above health advisory
	147	1.13	J	67.1		68.23	below health advisory
	148	57.3		5.83		63.13	below health advisory
	149	not detected		59.1		59.1	below health advisory
	150	1.21	J	55.3		56.51	below health advisory
	151	34.2		8.1		42.3	below health advisory
	152	13.8		28.4		42.2	below health advisory
	153	2.11		36.5		38.61	below health advisory
	154	7.98		24.2		32.18	below health advisory
	155	13.4		18		31.4	below health advisory
	156	7.51		22.8		30.31	below health advisory
	157	11.1		18.8		29.9	below health advisory
	158	15.8		13.7		29.5	below health advisory
	159	8.45		19.9		28.35	below health advisory
	160	13.7		13.8		27.5	below health advisory
	161	12.7		14.1		26.8	below health advisory
	162	14.9		10.7		25.6	below health advisory
	163	10.1		12.9		23	below health advisory
	164	8.32		14.3		22.62	below health advisory
	165	3.71		18.7		22.41	below health advisory
	166	9.59		12.5		22.09	below health advisory
Initial Area – South	167	21		not detected		21	below health advisory
	168	7.02		12.8		19.82	below health advisory
	169	9.44		9.19		18.63	below health advisory
	170	10.8		7.6		18.4	below health advisory
	171	13.9		4.45		18.35	below health advisory
	172	14.1		3.78		17.88	below health advisory
	173	6.7		8.63		15.33	below health advisory
	174	8.94		5.36		14.3	below health advisory
	175	6.98		6.77		13.75	below health advisory
	176	12.7		0.822	J	13.522	below health advisory
	177	6.06		7.17		13.23	below health advisory
	178	3.34		8.73		12.07	below health advisory
	179	7.61		4.08		11.69	below health advisory
	180	6		5.07		11.07	below health advisory
	181	5.91		2.93		8.84	below health advisory
	182	6.74		1.83	J	8.57	below health advisory
	183	not detected		8.56		8.56	below health advisory
	184	3.54		4.2		7.74	below health advisory
	185	3.51		3.94	J	7.45	below health advisory
	186	4.8		2.65		7.45	below health advisory
	187	4.25		2.75		7	below health advisory
Initial Area – South	188	not detected		6.32		6.32	below health advisory
	189	4.71		1	J	5.71	below health advisory
	190	3.12		2.33		5.45	below health advisory
	191	1.16	J	4.07		5.23	below health advisory
	192	2.46		2.4		4.86	below health advisory
	193	not detected		4.79		4.79	below health advisory
	194	2.9		1.09	J	3.99	below health advisory
	195	1.28	J	2.64		3.92	below health advisory
	196	1.18	J	2.43		3.61	below health advisory
	197	2.04		1.51	J	3.55	below health advisory
	198	not detected		3.47	J	3.47	below health advisory
	199	1.94	J	1.52	J	3.46	below health advisory
	200	2.82		not detected		2.82	below health advisory
	201	1.52	J	1.21	J	2.73	below health advisory
	202	1.49	J	0.77	J	2.26	below health advisory
	203	1.09	J	1.09	J	2.18	below health advisory
	204	1.87	J	not detected		1.87	below health advisory
	205	1.26	J	not detected		1.26	below health advisory
	206	not detected		1.06	J	1.06	below health advisory
	207	not detected		1.04	J	1.04	below health advisory
	208	0.975	J	not detected		0.975	below health advisory
Expanded Sampling Area	209	not detected		0.89	J	0.89	below health advisory
	210	not detected		0.821	J	0.821	below health advisory
	211	0.816	J	not detected		0.816	below health advisory
	212	not detected		0.797	J	0.797	below health advisory
	213–243	not detected		not detected		not detected	not detected
	244	25.9		19.7		45.6	below health advisory

Note: The "Q" columns identify data qualifiers that apply to given results. A "J" (estimated value) indicates the value reported for the analyte is detected below the LOQ. The value reported is considered estimated.

FOR MORE INFORMATION

visit <http://go.usa.gov/AEQF>

or scan the QR code →

ACRONYMS & ABBREVIATIONS			
EPA	U.S. Environmental Protection Agency	PFOA	perfluorooctanoic acid
NAS	Naval Air Station	PFOS	perfluorooctane sulfonate
OLF	Outlying Landing Field	ppt	part(s) per trillion
PFAS	per- and polyfluoroalkyl substances		

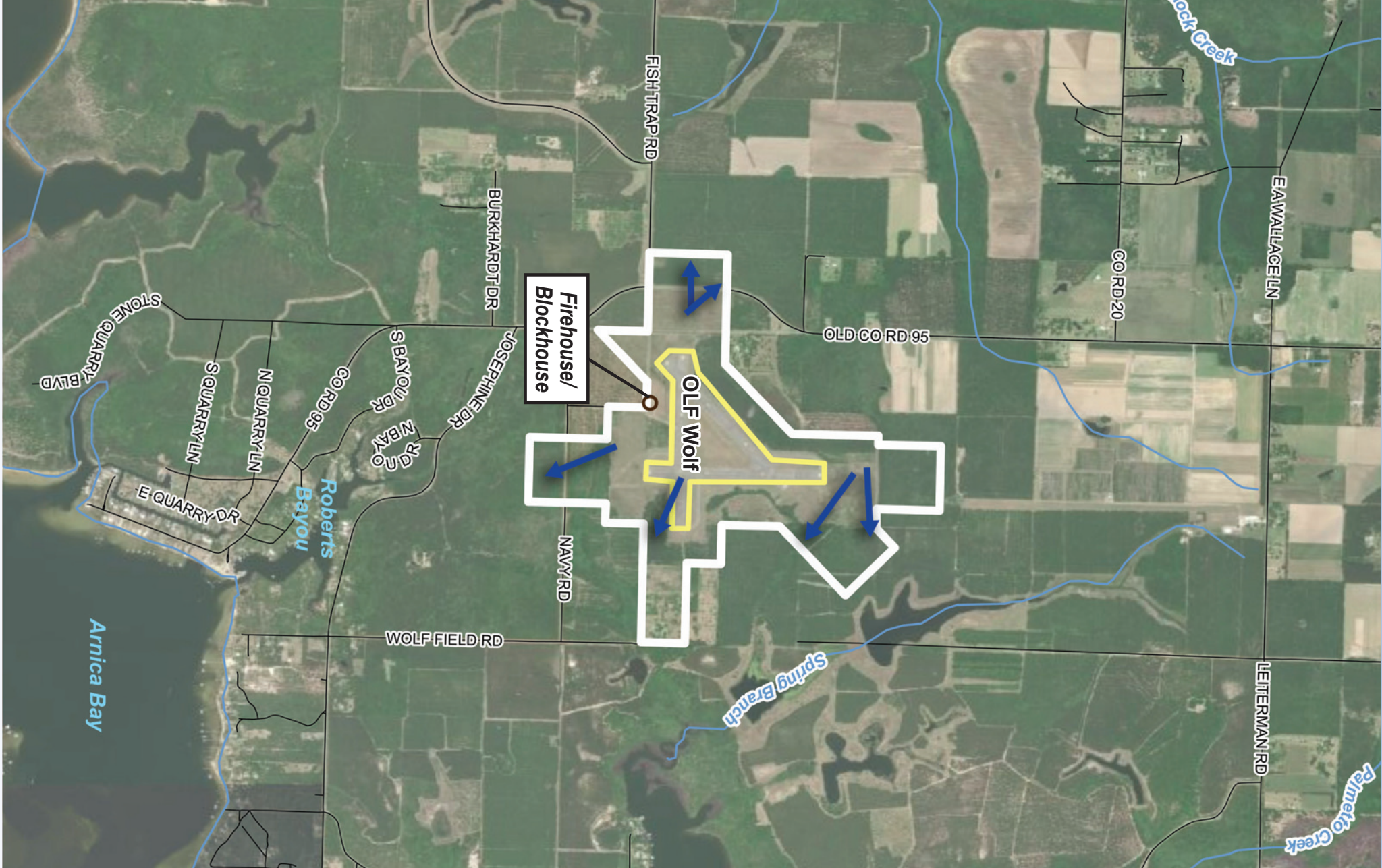
Note: "Health advisory" refers to the EPA lifetime drinking water health advisory for PFOA and/or PFOS (70 ppt).



OLF Wolf

On-Base PFAS Release Areas

- PFAS release areas have been identified on OLF Wolf.
- Types of PFAS release areas on OLF Wolf include:
 - Runways
 - Firehouse/Blockhouse



LEGEND

- PFAS release area
- Runways
- Base boundary
- Surface water
- Estimated groundwater flow direction

Scale: 0 to 1 mile

ACRONYMS & ABBREVIATIONS			
EPA	U.S. Environmental Protection Agency	PFOA	perfluorooctanoic acid
NAS	Naval Air Station	PFOS	perfluorooctane sulfonate
OLF	Outlying Landing Field	ppt	part(s) per trillion
PFAS	per- and polyfluoroalkyl substances		

Note: "Health advisory" refers to the EPA lifetime drinking water health advisory for PFOA and/or PFOS (70 ppt).

FOR MORE INFORMATION
visit <http://go.usa.gov/AEEQF>
or scan the QR code →



OLF Wolf Off-Base Drinking Water

Sampling Area with PFOA and PFOS Results

The property with results above the health advisory has been connected to public water.

Initial Area – Northwest: 8 wells sampled

8 no detections

Total wells sampled	27
No detections	19
Detections below health advisory	7
Detections above health advisory	1

Initial Area – Northeast: 9 wells sampled

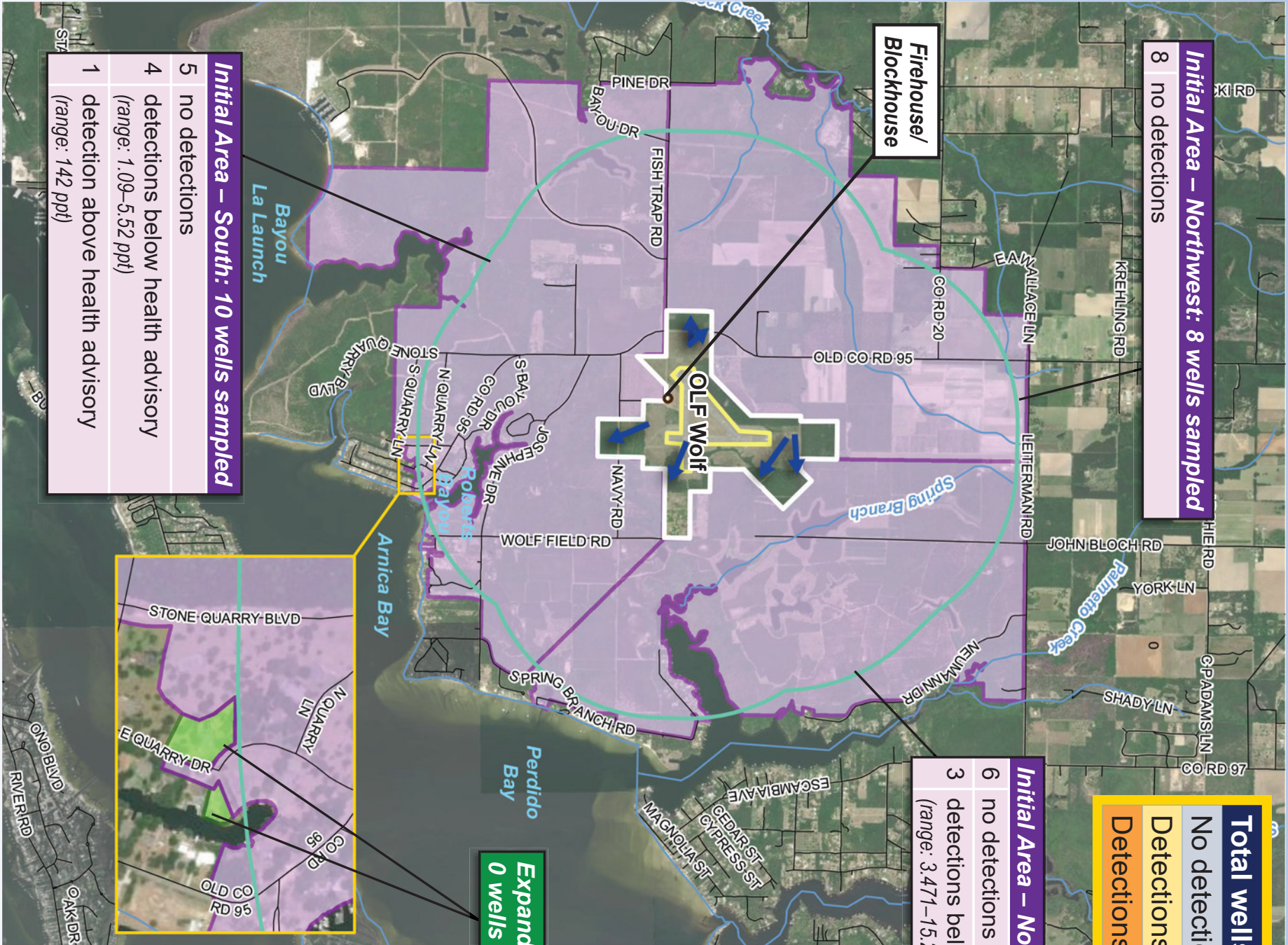
6 no detections
3 detections below health advisory
(range: 3.471–15.23 ppt)

Firehouse/
Blockhouse

OLF Wolf

Expanded Sampling Area:
0 wells sampled

Initial Area – South: 10 wells sampled
5 no detections
4 detections below health advisory (range: 1.09–5.52 ppt)
1 detection above health advisory (range: 142 ppt)



LEGEND

- PFAS release area
- Runways
- Base boundary
- Surface water
- Estimated groundwater flow direction
- Dowgradient 1-mile PFAS release buffer
- Initial sampling area
- Expanded sampling area

Note: Results shown are the sum of PFOA and PFOS detections.

0 0.5 1 mile

ACRONYMS & ABBREVIATIONS

EPA	U.S. Environmental Protection Agency	PFOA	perfluorooctanoic acid
NAS	Naval Air Station	PFOS	perfluorooctane sulfonate
OLF	Outlying Landing Field	ppt	part(s) per trillion
PFAS	per- and polyfluoroalkyl substances		

Note: "Health advisory" refers to the EPA lifetime drinking water health advisory for PFOA and/or PFOS (70 ppt).

FOR MORE INFORMATION
visit <http://go.usa.gov/AEEQF>
or scan the QR code →



OLF Wolf Off-Base Drinking Water Sampling PFOA and PFOS Results

Sampling Area	Sample	PFOS (ppt)	Q	PFOA (ppt)	Q	PFOS + PFOA (ppt)	Result Interpretation
Initial Area – Northwest	1	not detected		not detected		not detected	not detected
	2	not detected		not detected		not detected	not detected
	3	not detected		not detected		not detected	not detected
	4	not detected		not detected		not detected	not detected
	5	not detected		not detected		not detected	not detected
	6	not detected		not detected		not detected	not detected
	7	not detected		not detected		not detected	not detected
	8	not detected		not detected		not detected	not detected
Initial Area – Northeast	9	1.43 J		13.8 J		15.23	below health advisory
	10	4.22		4.06		8.28	below health advisory
	11	0.921 J		2.55 J		3.471	below health advisory
	12	not detected		not detected		not detected	not detected
	13	not detected		not detected		not detected	not detected
	14	not detected		not detected		not detected	not detected
	15	not detected		not detected		not detected	not detected
	16	not detected		not detected		not detected	not detected
	17	not detected		not detected		not detected	not detected
	18	not detected		142		142	above health advisory
Initial Area – South	19	not detected		5.52		5.52	below health advisory
	20	not detected		4.79		4.79	below health advisory
	21	1.31 J		not detected		1.31	below health advisory
	22	1.09 J		not detected		1.09	below health advisory
	23	not detected		not detected		not detected	not detected
	24	not detected		not detected		not detected	not detected
	25	not detected		not detected		not detected	not detected
	26	not detected		not detected		not detected	not detected
	27	not detected		not detected		not detected	not detected

Note: The "Q" columns identify data qualifiers that apply to given results. A "J" (estimated value) indicates the value reported for the analyte is detected below the LOQ. The value reported is considered estimated.

FOR MORE INFORMATION
visit <http://go.usa.gov/AEQF>
or scan the QR code →

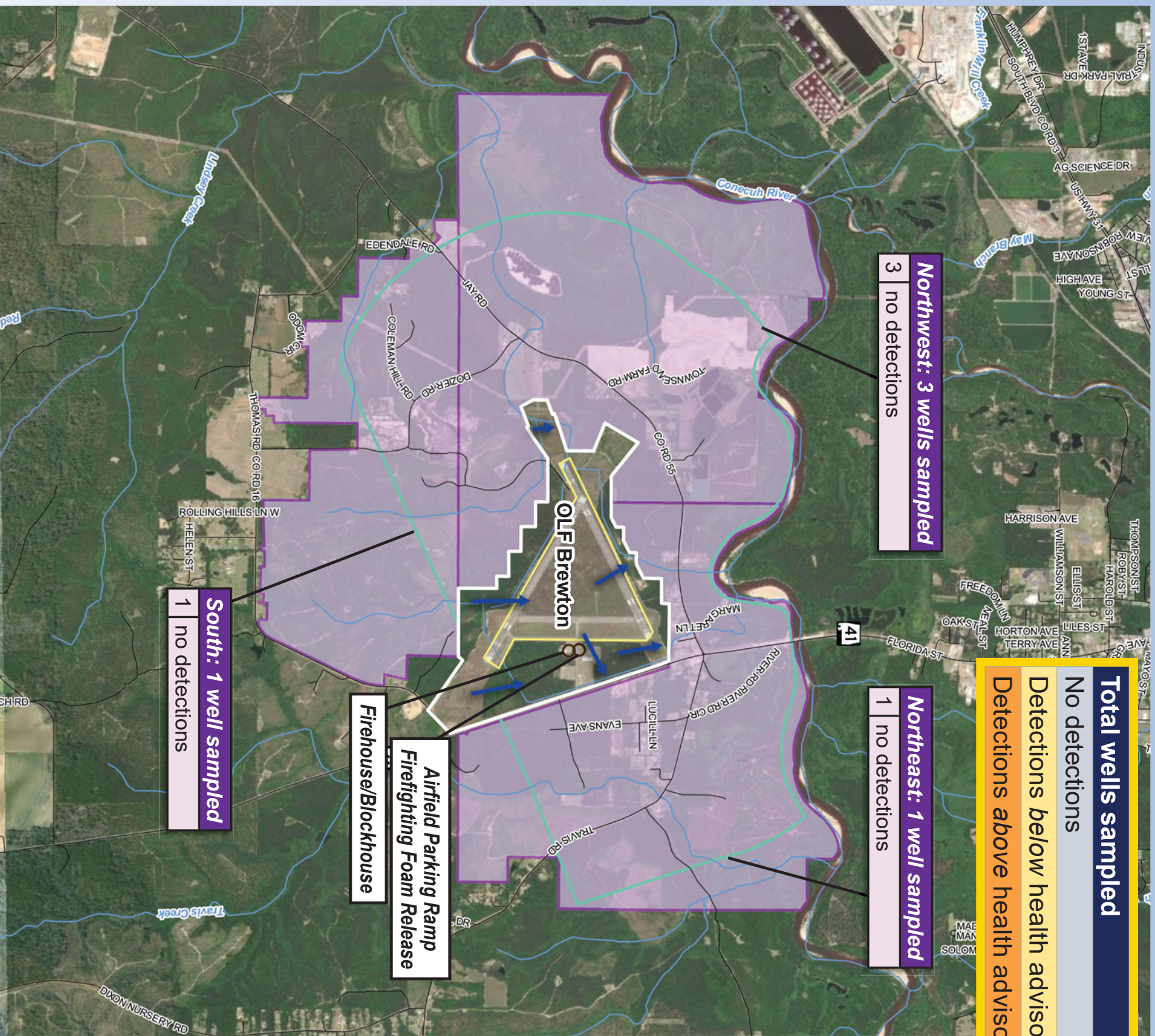
ACRONYMS & ABBREVIATIONS			
EPA	U.S. Environmental Protection Agency	PFOA	perfluorooctanoic acid
NAS	Naval Air Station	PFOS	perfluorooctane sulfonate
OLF	Outlying Landing Field	ppt	part(s) per trillion
PFAS	per- and polyfluoroalkyl substances		

Note: "Health advisory" refers to the EPA lifetime drinking water health advisory for PFOA and/or PFOS (70 ppt).





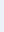
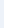
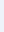


OLF Brewton Off-Base Drinking Water Sampling Area with PFOA and PFOS Results

Total wells sampled	5
No detections	5
Detections <i>below</i> health advisory	0
Detections <i>above</i> health advisory	0



LEGEND

-  PFAS release area  Estimated groundwater flow direction
 Runways  Downgradient 1-mile PFAS release buffer
 Base boundary  Sampling area
 Surface water



ACRONYMS & ABBREVIATIONS

EPA	U.S. Environmental Protection Agency	PFOA	perfluorooctanoic acid	refers to the EPA lifetime drinking water health advisory for PFOA and/or PFOS (70 ppt)
NAS	Naval Air Station	PFOS	perfluorooctane sulfonate	
OLF	Outlying Landing Field	ppt	part(s) per trillion	
PFAS	per- and polyfluoroalkyl substances			

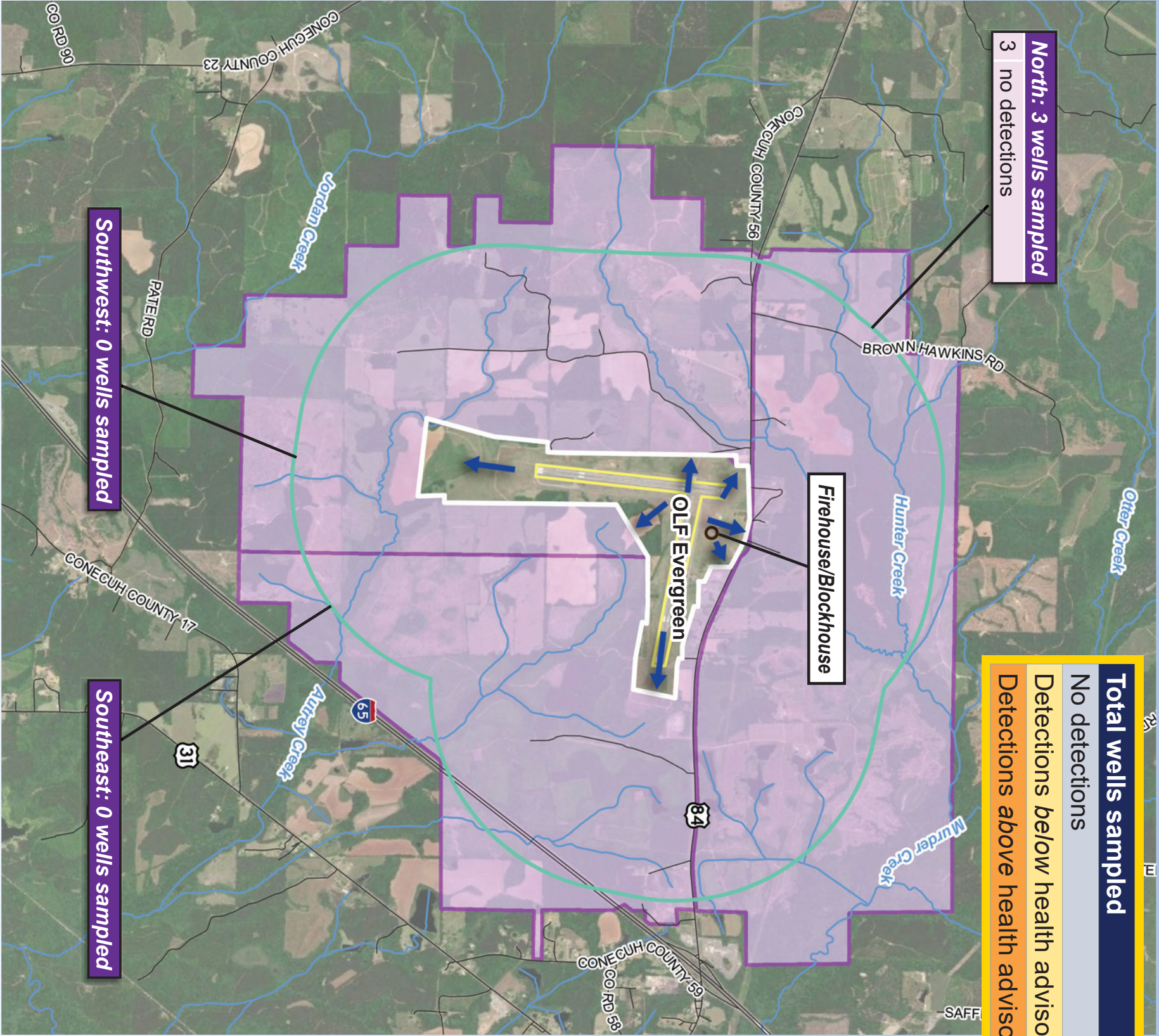
Note: "Health advisory" refers to the EPA lifetime drinking water health advisory for PFOA and/or PFOS (70 ppt).

FOR MORE INFORMATION
visit <http://go.usa.gov/xAEQF>
or scan the QR code →





OLF Evergreen Off-Base Drinking Water Sampling Area with PFOA and PFOS Results



- LEGEND**
- PFAS release area
 - Runways
 - Base boundary
 - Surface water
 - Estimated groundwater flow direction
 - Downgradient 1-mile PFAS release buffer
 - Sampling area



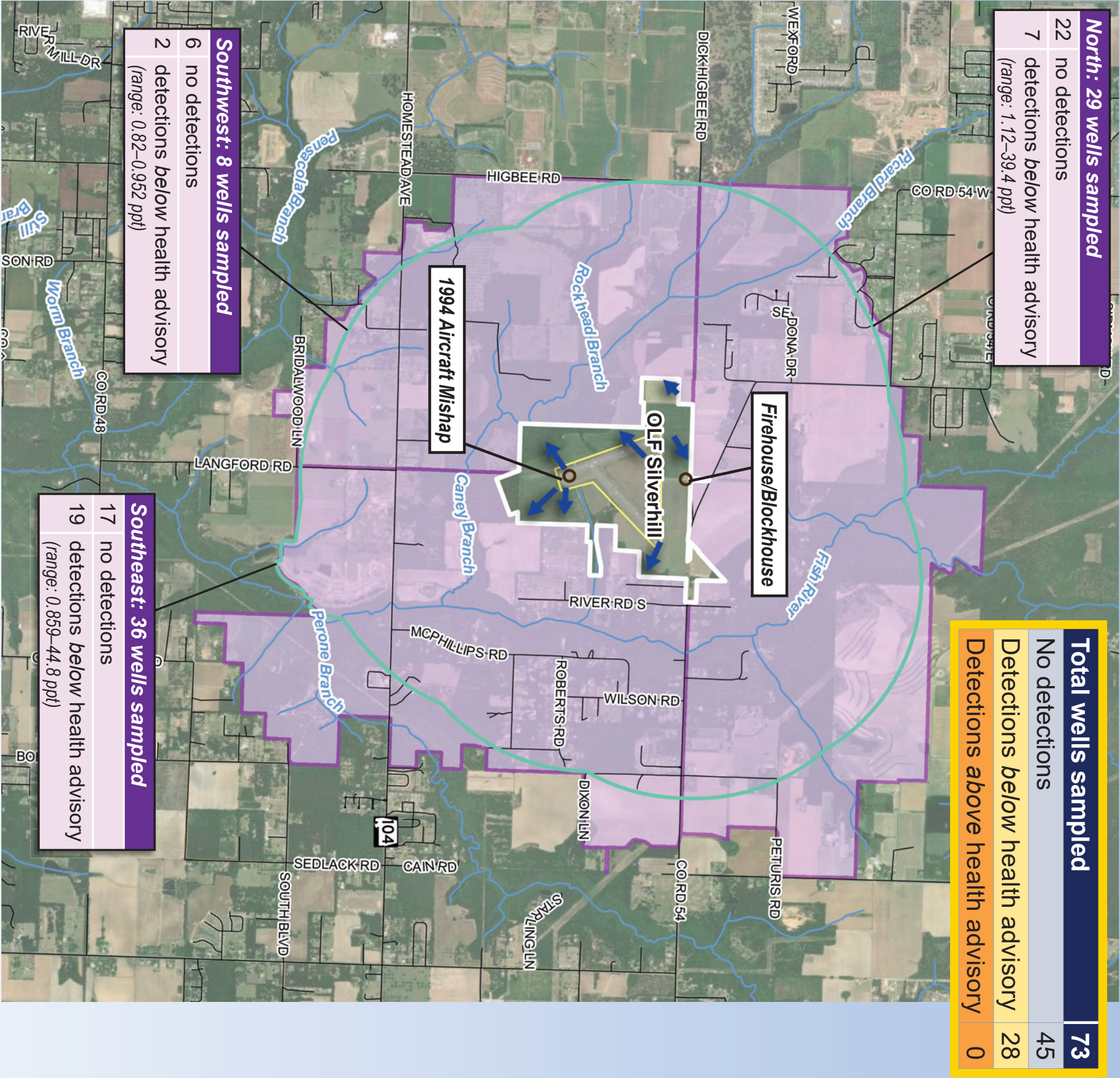
FOR MORE INFORMATION
visit <http://go.usa.gov/AEQF>
or scan the QR code →

ACRONYMS & ABBREVIATIONS			
EPA	U.S. Environmental Protection Agency	PFOA	perfluorooctanoic acid
NAS	Naval Air Station	PFOS	perfluorooctane sulfonate
OLF	Outlying Landing Field	ppt	part(s) per trillion
PFAS	per- and polyfluoroalkyl substances		

Note: "Health advisory" refers to the EPA lifetime drinking water health advisory for PFOA and/or PFOS (70 ppt).



OLF Silverhill Off-Base Drinking Water Sampling Area with PFOA and PFOS Results



FOR MORE INFORMATION
visit <http://go.usa.gov/AEQF>
or scan the QR code →

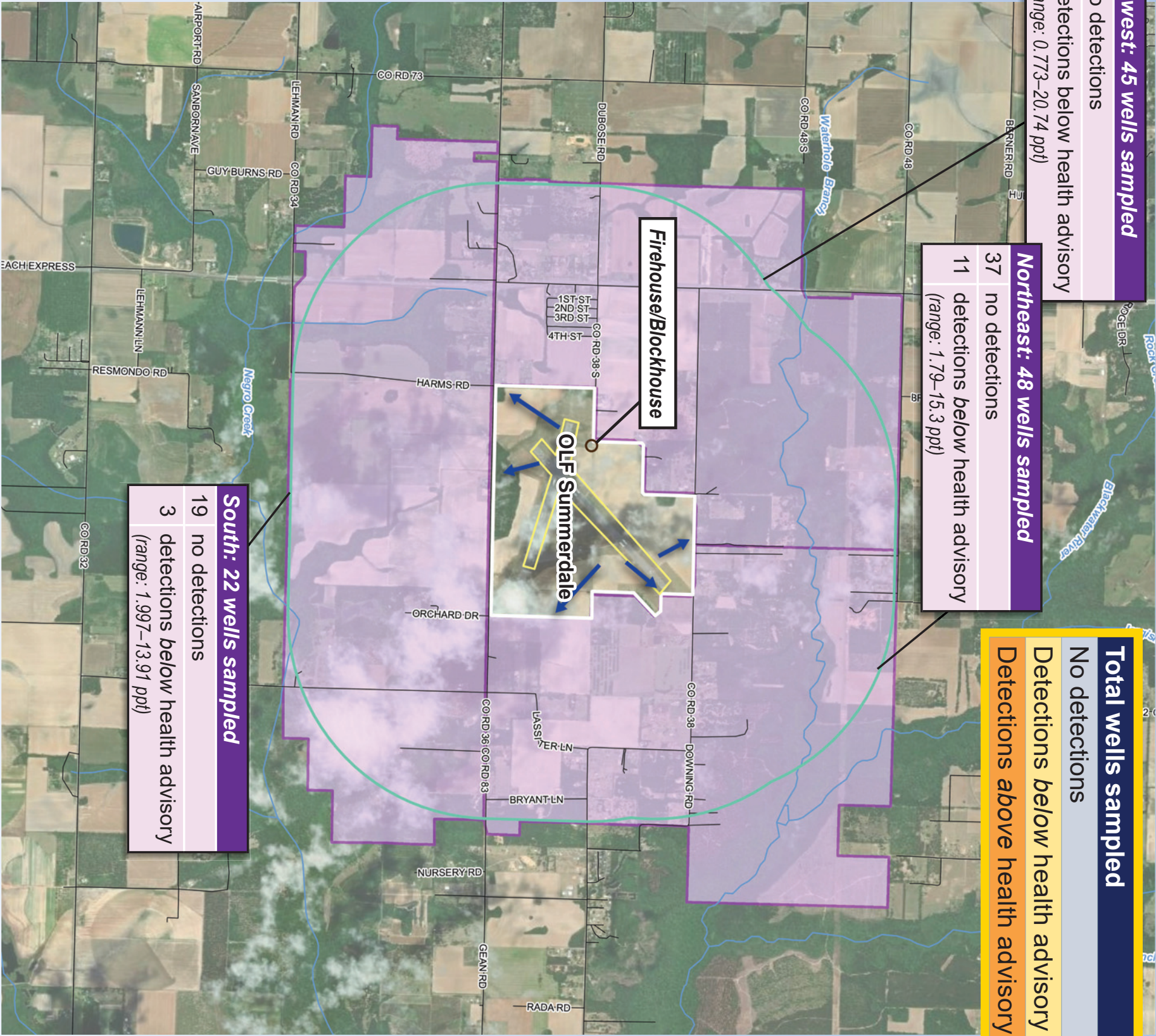


OLF Summerdale Off-Base Drinking Water Sampling Area with PFOA and PFOS Results

Northwest: 45 wells sampled	
34	no detections
11	detections below health advisory (range: 0.773–20.74 ppt)

Northeast: 48 wells sampled	
37	no detections
11	detections below health advisory (range: 1.79–15.3 ppt)

Total wells sampled		115
No detections		90
Detections below health advisory		25
Detections above health advisory		0



South: 22 wells sampled	
19	no detections
3	detections below health advisory (range: 1.997–13.91 ppt)

LEGEND

PFAS release area

Runways

Base boundary

Surface water

Estimated groundwater flow direction

Downgradient 1-mile PFAS release buffer

Sampling area

Note: Results shown are the sum of PFOA and PFOS detections.



FOR MORE INFORMATION
visit <http://go.usa.gov/AEEQF>
or scan the QR code →

ACRONYMS & ABBREVIATIONS			
EPA	U.S. Environmental Protection Agency	PFOA	perfluorooctanoic acid
NAS	Naval Air Station	PFOS	perfluorooctane sulfonate
OLF	Outlying Landing Field	ppt	part(s) per trillion
PFAS	per- and polyfluoroalkyl substances		

Note: "Health advisory" refers to the EPA lifetime drinking water health advisory for PFOA and/or PFOS (70 ppt).



The EPA lifetime drinking water health advisory for PFOA and/or PFOS is 70 ppt (70 ng/L).

This section contains sample processing information used by the laboratory.

The result for PFBS:
PFBS was *not* detected in the sample.
This is reported as “**ND**” (*not detected*).

The result for PFOS:

PFOs was detected in the sample at 1.54 ng/L (1.54 ppt).

A surrogate is a substance similar to the analytes of interest.

- Not found naturally in the substance.
- Intentionally added to the sample at a known amount to monitor the performance of the sample's preparation and analysis.

Pure Signal

1.97

More Certainty

1.48

Less Certainty

0.738

Response S/N = 3

Noise

High Uncertainty

Noise

LOQ - The limit of quantitation (the lowest calibration point of the instrument) is the lowest level the laboratory can reliably measure with a known degree of confidence and accuracy.

A detected value above the LOQ is reported without a qualifier.

LOD - The limit of detection is the lowest possible concentration at which the laboratory can measure (with a certain degree of confidence) but not quantify the analyte within the sample.

A detected value between the DL and LOQ is reported with a "j" qualifier flag (estimated value).

DL - The detection limit is the lowest level the laboratory can reliably say the analyte is present.

A non-detected result is reported at the LOD as not detected.

This column identifies the data qualifiers that apply to a given result. Possible laboratory qualifiers are:

- “B” (Blank)** – this analyte was also detected in the method blank.
- “D” (Diluted Sample)** – dilution was required by the laboratory to obtain a sample result within the calibration range. The final result is adjusted for the dilution factor.
- “J” (Estimated Value)** – indicates the value reported for the analyte is detected below the LOQ. The value reported is considered estimated.

“**j” (Estimated Value)** – indicates the value reported for the analyte is detected below the LOQ. The value reported is considered estimated.

A detected value between the DL and LOQ is reported with a "J" qualifier flag (estimated value).

Response S/N = 3

0.738

High

DL – The **detection limit** is the lowest level the laboratory can reliably say the analyte is present.

A non-detected result is reported at the LOD as not detected.

EPA	U.S. Environmental Protection Agency	PFQA	perfluorooctanoic acid
NAS	Naval Air Station	PFOS	perfluorooctane sulfonate
OLF	Outlying Landing Field	ppt	part(s) per trillion
PFAS	per- and polyfluoroalkyl substances		

Note: "Health advisory"

refers to the EPA
lifetime drinking water
health advisory for
PFOA and/or PFOS
(70 ppt).

FOR MORE INFORMATION
visit <http://go.usa.gov/XAEQF>
or scan the QR code →

Per- and Polyfluoroalkyl Substances (PFAS)

What Are PFAS?

- Family of manufactured chemicals.
- PFOA and PFOS are the most studied and understood.
- Found in the environment around the world (in air, water, soil, animals, plants, as well as in people).
- Last a long time in the environment.
- Used since 1940s in many products, such as:



Image: U.S. Navy / Photographer's Mate 3rd Class Tommy Gillman
firefighting foam



Image: freepik.com
stain-resistant carpets and fabrics



Image: Kyle Boone / unsplash
water-resistant fabrics



Image: freepik.com
personal care products



Image: Valeria_Aksakova / freepik
nonstick cookware



Image: freepik.com
food packaging

What Is the EPA Lifetime Drinking Water Health Advisory for PFOA and PFOS?

- It is a combined level of PFOA and PFOS of 70 ppt in drinking water.
- It is intended to protect against harmful health effects to sensitive populations and the general public, for lifetime exposure.

How Was the EPA Lifetime Drinking Water Health Advisory Calculated?

- It is based on studies of health effects from PFOA and PFOS in laboratory animals.
- It assumes 20 percent of overall exposure is from drinking water, and 80 percent of overall exposure is from other sources.
- It considers information regarding health effects in people exposed to PFOA and PFOS, including the fetuses or nursing infants of mothers who are exposed.

FOR MORE INFORMATION
visit <http://go.usa.gov/xAEQF>
or scan the QR code →



ACRONYMS & ABBREVIATIONS

EPA	U.S. Environmental Protection Agency
NAS	Naval Air Station
OLF	Outlying Landing Field
PFAS	per- and polyfluoroalkyl substances

PFOA	perfluorooctanoic acid
PFOS	perfluorooctane sulfonate
ppt	part(s) per trillion

Note: "Health advisory" refers to the EPA lifetime drinking water health advisory for PFOA and/or PFOS (70 ppt).

PFAS Exposure and Health Effects

Do People Have PFAS in Their Bodies?

- CDC estimates that most people in the U.S. have PFAS in their bodies.
- PFAS can build up in the body.
- Reducing exposure to PFAS can reduce levels in the body.

How Can People Be Exposed to PFAS?

- PFAS may be in drinking water, food, indoor dust, some consumer products, and workplaces.
- Non-occupational exposures can occur by drinking water or eating food that contain PFAS.
- Exposure is minor through skin contact when bathing, showering, or swimming.
- Mothers with PFAS in their bodies can transfer PFAS to their fetuses or nursing infants.
 - CDC advises that based on current science, the benefits of breastfeeding appear to outweigh the risks for infants exposed to PFAS in breastmilk.

How Can People Reduce Exposure to PFAS in Drinking Water?

- Use an alternative water source for drinking, cooking, brushing teeth, and making baby formula.
- Certain certified filters can reduce PFAS in drinking water.

FOR MORE INFORMATION
about certified PFAS filters:
visit <http://www.nsf.org>
or scan the QR code →



What Are the Potential Health Effects?

- Scientists are still learning about how exposure to PFAS affects people’s health.
- Studies indicate possible health effects could include:
 - Increased cholesterol levels.
 - Changes in liver enzymes.
 - Increased risk of high blood pressure and preeclampsia in pregnant women.
 - Immune system effects.
 - Small decrease in infant birth weight and changes in growth.
 - Increased risks of certain types of cancers (testicular and kidney).
- Levels of PFAS in drinking water do not predict health impacts.

Are Blood Tests Available for PFAS?

- Blood testing for PFAS is available but is *not* a regular test offered by a doctor.
 - Blood test results can't tell you if PFAS exposure will cause current or future health problems.
 - Blood test results can't provide information on treatment.

Chemical exposures do not always lead to health effects.

FOR MORE INFORMATION
visit <http://go.usa.gov/xAEQF>
or scan the QR code →



ACRONYMS & ABBREVIATIONS

CDC	Centers for Disease Control and Prevention	PFAS	per- and polyfluoroalkyl substances
EPA	U.S. Environmental Protection Agency	PFOA	perfluorooctanoic acid
NAS	Naval Air Station	PFOS	perfluorooctane sulfonate
OLF	Outlying Landing Field	ppt	part(s) per trillion

Note: "Health advisory" refers to the EPA lifetime drinking water health advisory for PFOA and/or PFOS (70 ppt).

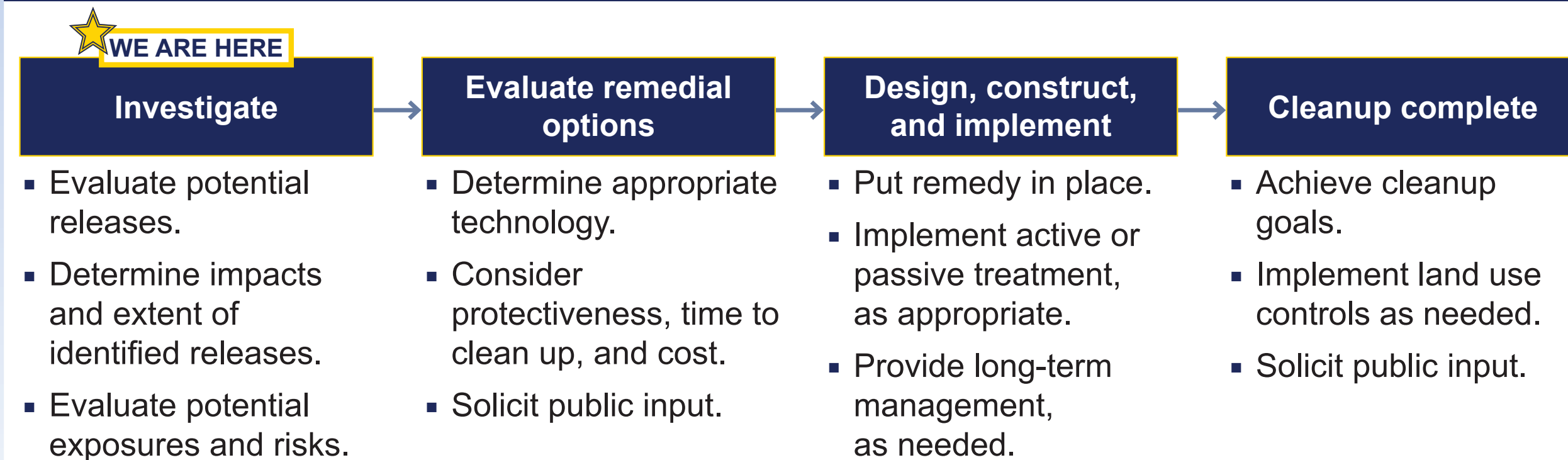


Environmental Cleanup Process

PRIORITY: Protect Human Health and the Environment

- The structured regulatory process, shown below, is being used to identify and clean up past environmental releases at NAS Whiting Field and its outlying landing fields.
- The Alabama Department of Environmental Management is working closely with the Navy and is providing oversight at every step of the process.
- Public input is welcomed throughout the process and is formally solicited at certain points.
- From beginning to end, this process will be lengthy.

PFAS Environmental Cleanup Process



FOR MORE INFORMATION
visit <http://go.usa.gov/xAEQF>
or scan the QR code →



ACRONYMS & ABBREVIATIONS

EPA	U.S. Environmental Protection Agency	PFOA	perfluorooctanoic acid
NAS	Naval Air Station	PFOS	perfluorooctane sulfonate
OLF	Outlying Landing Field	ppt	part(s) per trillion
PFAS	per- and polyfluoroalkyl substances		

Note: "Health advisory" refers to the EPA lifetime drinking water health advisory for PFOA and/or PFOS (70 ppt).



Sign Up for Your Sampling Appointment

Off-Base Drinking Water Well Sampling

- The Navy will be sampling drinking water wells in the sampling areas.
- Sampling is at no cost to you.
- Drinking water samples will be collected **Monday, June 13** through **Saturday, June 18, 2022**.
- Sampling appointments are available on these days **8 a.m.–5 p.m.**

Additional times are available upon request

- The property owner must give permission for sampling and is asked to complete the questionnaire.
- Sampling takes less than an hour.
- An adult must be present at the property during sampling.

Sampling Process

- Samples will be collected by a team of experienced contractors:
 - Team will consist of two members.
 - The water sample will be collected as close to well as possible.
 - Water will run for 5 minutes prior to collection.
- Samples will be collected and analyzed according to EPA guidelines.

The Navy will provide bottled water for cooking and drinking if PFOA and/or PFOS are above the EPA health advisory (70 ppt).

FOR MORE INFORMATION
visit <http://go.usa.gov/xAEQF>
or scan the QR code →



ACRONYMS & ABBREVIATIONS

EPA	U.S. Environmental Protection Agency	PFOA	perfluorooctanoic acid
NAS	Naval Air Station	PFOS	perfluorooctane sulfonate
OLF	Outlying Landing Field	ppt	part(s) per trillion
PFAS	per- and polyfluoroalkyl substances		

Note: "Health advisory" refers to the EPA lifetime drinking water health advisory for PFOA and/or PFOS (70 ppt).