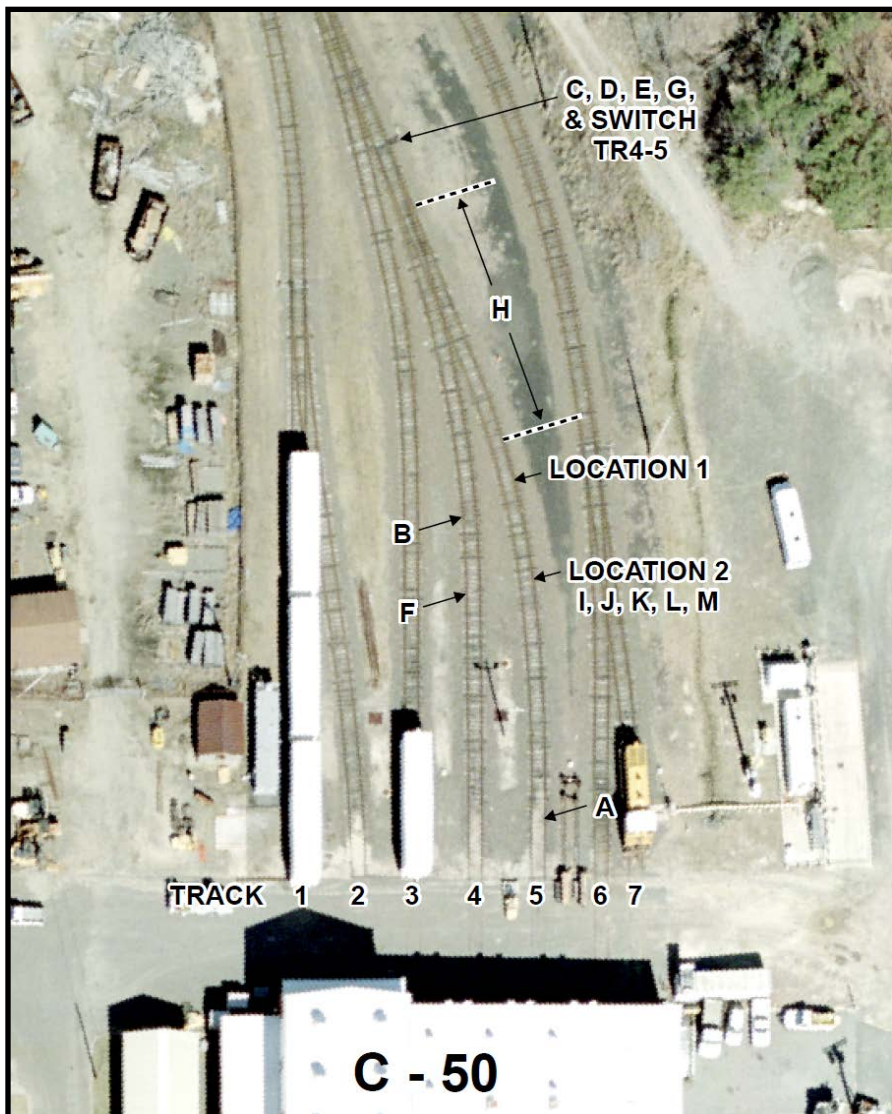


# In-house Serious Mishap

## Crushed by Rail Car



- 57year old male in-house employee
- Activity: Public Works Department mechanics were drilling (moving) a box car from repair bay/track number 4 and placing it on track 5 in the maintenance yard adjacent to building C-50. The locomotive and boxcar had moved north passed the rail switch RH-45 onto the main-line. Employee threw the switch to direct the track from 4 to 5. While walking back to C-50 he crossed track 5 thinking the train was on track 4, when he turned to cross track 5 he stepped in front of the moving boxcar with his right foot. His left foot was caught by the 1st wheel of the boxcar, pushing him to the ground in the center of the track, or what's called "the gage". The first and second wheel of the boxcar ran over his foot and leg.
- Injury: Partial leg amputation
- Direct cause:
  - Crossing the tracks in front of moving boxcar
  - Crossing the track on an angle instead of at 90°
- Indirect cause:
  - Employee lost situational awareness
  - Employee did not maintain visual contact with train engineer
- Lessons learned:
  - No SOP specifically addressing operations for maintenance yard work, or individuals with limited "Shop Licenses Only" authorization
  - Maintain awareness of your surroundings and the job you're performing and line of sight with train engineer